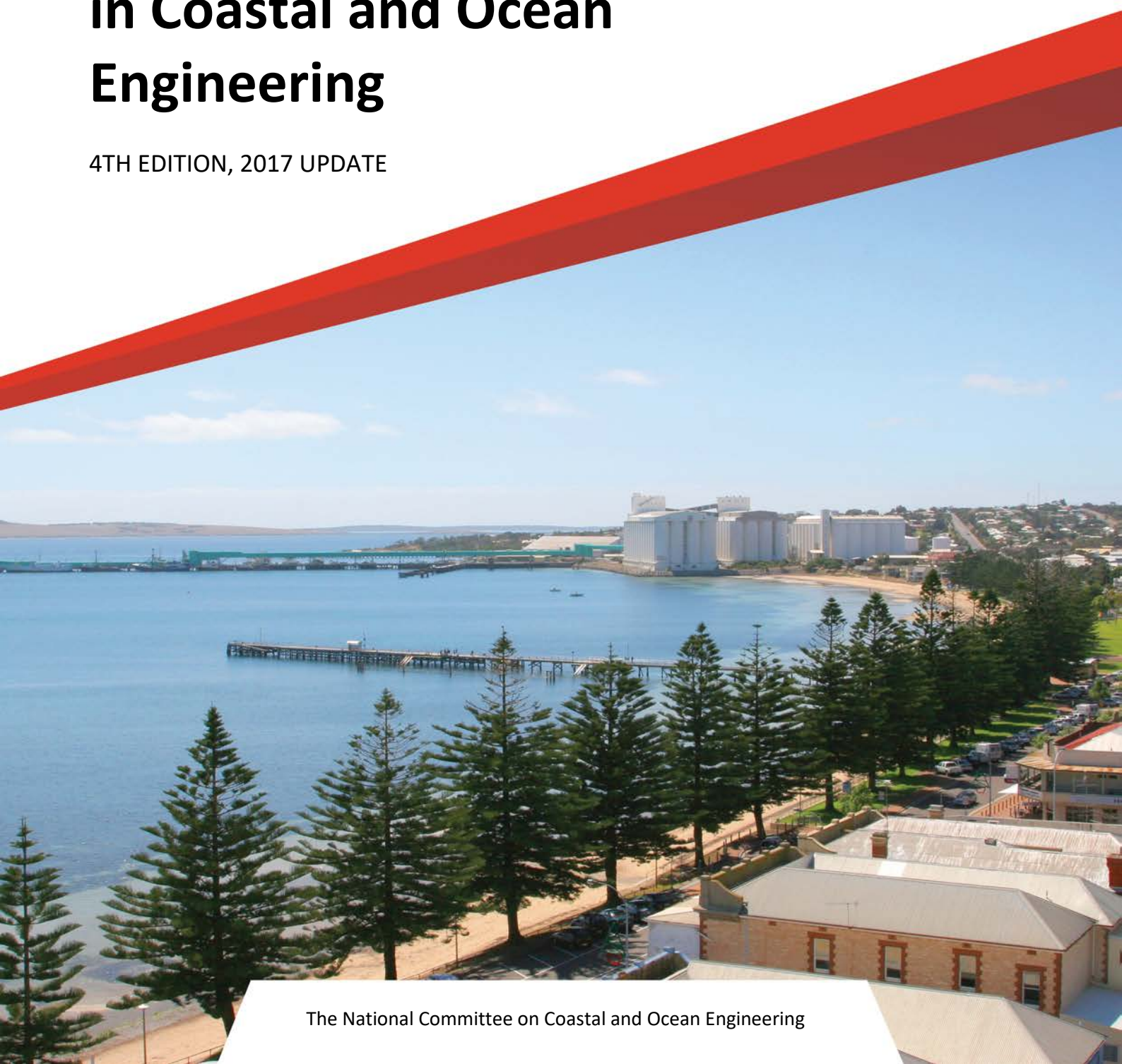




ENGINEERS  
AUSTRALIA

# Guidelines for Responding to the Effects of Climate Change in Coastal and Ocean Engineering

4TH EDITION, 2017 UPDATE



The National Committee on Coastal and Ocean Engineering

© Engineers Australia 2017

#### Disclaimer

This document is prepared by the National Committee on Coastal and Ocean Engineering, Engineers Australia, for the guidance of coastal engineers and other professionals working with the coast who should accept responsibility for the application of this material.

#### Copies of these Guidelines are available from:

<http://www.engineersaustralia.org.au/NCCOE>

For further information, or to make comment, contact:  
National Committee on Coastal and Ocean Engineering  
Engineers Australia  
Engineering House  
11 National Circuit, Barton ACT 2600  
[nccoe@engineersaustralia.org.au](mailto:nccoe@engineersaustralia.org.au)

#### Authors

1<sup>st</sup> edition: NCCOE.

2<sup>nd</sup> edition: updated by Bruce A. Harper (Systems Engineering Australia).

3<sup>rd</sup> edition: updated by Bruce A. Harper (Systems Engineering Australia), edited by Doug Lord & Murray Townsend (NCCOE).

4<sup>th</sup> edition: updated by Bruce A. Harper (Systems Engineering Australia), edited by Tony Webb and Ed Couriel NCCOE.

#### Important Notice

The material contained in these notes is in the nature of general comment only and is not advice on any particular matter. No one should act on the basis of anything contained in these notes without taking appropriate professional advice on the particular circumstances. The Publishers, the Editors and the Authors do not accept responsibility for the consequences of any action taken or omitted to be taken by any person, whether a subscriber to these notes or not, as a consequence of anything contained in or omitted from these notes.

This publication has been subject to a peer review process.

#### National Library of Australia Cataloguing-in-Publication entry

Includes bibliographical references.  
Climatic changes – Australia.  
Coastal engineering – Environmental aspects – Australia.  
Coastal zone management – Australia

#### National Library of Australia Cataloguing-in-Publication entry

Creator: Harper, Bruce A., author.

Title: Guidelines for responding to the effects of climate change  
in coastal and ocean engineering /  
Bruce A. Harper ; Engineers Australia  
National Committee on Coastal and Ocean  
Engineering.

Edition: 4th edition.

ISBN: 9781925627121 (ebook)

Series: National Committee on Coastal and Ocean Engineering  
guidelines series.

Subjects: Climatic changes--Australia.  
Coastal engineering--Australia.  
Coastal zone management--Australia.

#### Other Creators/Contributors:

Engineers Australia. National Committee on Coastal and  
Ocean Engineering.

#### NCCOE Guidelines Series

1. Guidelines for Responding to the Effects of Climate Change in Coastal and Ocean Engineering, 4<sup>th</sup> ed, 2017. (this document).
2. Coastal Engineering Guidelines for working with the Australian coast in an ecologically sustainable way, 3<sup>rd</sup> ed, 2017.
3. Climate Change Adaptation Guidelines in Coastal Management and Planning, 2<sup>nd</sup> ed 2017.

Published by Engineers Australia, Engineering House, 11 National Circuit, Barton ACT 2600, Australia.  
<http://www.engineersaustralia.org.au>

**Cover photo:** Port Lincoln, South Australia (source: www.istockphoto.com, credit clintscholz)  
Illustrations from IPCC documents reproduced with permission from IPCC.

## PREFACE

These guidelines have been prepared by the National Committee on Coastal and Ocean Engineering (NCCOE) of Engineers Australia (EA) and represent an update and extension of previous editions, based on a methodology first developed in 1991, (outlined in Appendix A for reference). The NCCOE was formed in 1971 and is an honorary group of specialist engineering professionals, whose objective is to advance the science and art of coastal and ocean engineering throughout the general engineering profession and the community, by such means as:

- facilitating initial and continuing education in our field
- assisting in relevant tertiary course accreditation
- encouraging and setting priorities for research
- ensuring the availability of technical standards
- encouraging good coastal and ocean engineering practice
- providing a forum and a network for the exchange of views and experience
- formulating policy for Engineers Australia in the coastal and ocean area
- fostering interaction between the profession and the public on technical and social issues.

Funding for the preparation of these guidelines was mainly provided by income received from the biennial NCCOE-sponsored Coasts and Ports Conference series. The NCCOE acknowledges funding assistance from the former Commonwealth Department of Climate Change and Energy Efficiency in preparation of earlier editions.

This document is provided for the guidance of coastal and ocean engineers, who are expected to accept responsibly for their interpretation and application of the material provided. In particular, users should be aware that adoption of the recommended allowances, strategies and approaches in this document may not in itself be sufficient to gain development approval under Commonwealth, State or Local Government policies, where specific legislation, regulations, policy and guidelines might exist.

## DEDICATION

This publication is dedicated to the memory of the late Dr David Wilkinson, former NCCOE member and distinguished academic in the field of coastal and ocean engineering. David, who unexpectedly passed away in 1998, was a principal contributor to the first edition of this document completed in 1991 and was a co-recipient of the NCCOE Kevin Stark Memorial Award for excellence in coastal and ocean engineering in 1997.

# CONTENTS

<b>1. INTRODUCTION</b>	<b>1</b>
1.1 Background	1
1.2 Engineers Australia’s Climate Change Policy	2
1.3 Content and Use	2
<b>2. CLIMATE CHANGE</b>	<b>4</b>
2.1 The Intergovernmental Panel on Climate Change	4
2.2 The Scientific Basis of Climate Change	4
2.2.1 The Global Warming Process	4
2.2.2 Evidence of Climate Change	6
2.2.3 Latest IPCC Global Projections	10
2.2.4 Major Weather Systems and Global Climate Change	12
2.3 Impacts, Adaptation and Vulnerability to Climate Change	15
2.3.1 General	15
2.3.2 The Oceans	15
2.3.3 Coastal Zones and Small Islands	16
2.4 Possible Response Strategies	17
2.4.1 Adaptation Options	18
2.4.2 Implementation	19
<b>3. THE AUSTRALIAN CONTEXT</b>	<b>20</b>
3.1 Research Environment	20
3.2 Coastal and Ocean Impact Studies	20
3.3 Government Policies	21
<b>4. ENGINEERING IMPACT ASSESSMENT</b>	<b>22</b>
4.1 Scope	22
4.2 Methodology	23
4.3 Application	23
4.4 Example Assessments	34
4.4.1 Detailed Example 1: Fixed or Floating Offshore Structures	35
4.4.2 Detailed Example 2: Nearshore Tourism Development	36
4.4.3 Detailed Example 3: Greenfield Coastal Community	38
4.5 Summary	41
<b>5. RESEARCH AND MONITORING NEEDS</b>	<b>42</b>
5.1 The Scientific Basis	42
5.2 Impacts, Adaptation and Vulnerability to Climate Change	42
5.3 Coastal and Ocean Engineering Issues	43
<b>6. GLOSSARY</b>	<b>44</b>
<b>7. REFERENCES</b>	<b>46</b>

<b>8. SELECTED REGIONAL RESOURCE MATERIAL</b>	<b>50</b>
8.1 Northern Territory	50
8.2 Queensland	50
8.3 New South Wales	53
8.4 Victoria	54
8.5 Tasmania	54
8.6 South Australia	54
8.7 Western Australia	55
8.8 General	57

## Tables

Table 1 - Projected global mean sea level increase allowances by 2050 and 2100 suitable for engineering design (IPCC values rounded to 1 decimal point).	12
Table 2 - Sea level rise allowances relative to 1990 base level for each Government constituency at 30 <sup>th</sup> Nov 2016	21
Table 3 - Coastal and ocean engineering activities that may be affected by climate change	22
Table 4 - Key environmental variables and climate change scenarios	25
Table 5 - Process variables	26
Table 6 - Relationships between key and process variables	27
Table 7 - Design average recurrence interval T	33
Table 8 - Example interaction matrix for an offshore structure	37
Table 9 - Example interaction matrix for a nearshore tourism development	39

## Figures

- Figure 1 - Main drivers of climate change. The radiative balance between incoming solar shortwave radiation (SWR) and outgoing longwave radiation (OLR) is influenced by global climate ‘drivers’. Natural fluctuations in solar output (solar cycles) can cause changes in the energy balance (through fluctuations in the amount of incoming SWR). Human activity changes the emissions of gases and aerosols, which are involved in atmospheric chemical reactions, resulting in modified ozone and aerosol amounts. Ozone and aerosol particles absorb, scatter and reflect SWR, changing the energy balance. Some aerosols act as cloud condensation nuclei modifying the properties of cloud droplets and possibly affecting precipitation (after IPCC (2013); Fig 1.1). 5
- Figure 2 - Observed global mean combined land and ocean surface temperature anomalies, from 1850 to 2012 from three data sets. Top panel: annual mean values. Bottom panel: decadal mean values including the estimate of uncertainty for one dataset (black). Anomalies are relative to the mean of 1961–1990 (after IPCC (2013); Fig SPM.1(a)). 7
- Figure 3 Observed changes in atmospheric greenhouse gas concentrations. Atmospheric concentrations of carbon dioxide (CO<sub>2</sub>, green), methane (CH<sub>4</sub>, orange), and nitrous oxide (N<sub>2</sub>O, red). Data from ice cores (symbols) and direct atmospheric measurements (lines) are overlaid (IPCC (2014c), Fig 1.3) 8
- Figure 4 - Annual averages of the global mean sea level (mm). The red curve shows reconstructed sea level fields since 1870; the blue curve shows coastal tide gauge measurements since 1950 and the black curve is based on satellite altimetry. Error bars show 90% confidence intervals. (after IPCC 2007b, Fig 5.13) 9
- Figure 5 - 1993 to 2015 rates (mm/yr) of annual sea surface height rise measured relative to the land by coastal tide gauges (coloured dots, to November 2015) and relative to the centre of the Earth by satellites (to October 2015). (after BoM 2016) 9
- Figure 6 - from process-based models of global mean sea level (GMSL) rise relative to 1986–2005 for the four RCP scenarios. The solid lines show the median projections, the dashed lines show the likely ranges for RCP4.5 and RCP6.0, and the shading the likely ranges for RCP2.6 and RCP8.5. The time means for 2081–2100 are shown as coloured vertical bars (IPCC (2013), Fig TS.22). 11
- Figure 7 - Ensemble mean regional relative sea level change (m) evaluated from 21 models of the CMIP5 scenario RCP4.5, including atmospheric loading, plus land-ice, glacial isostatic adjustment and terrestrial water sources, between 1986–2005 and 2081–2100 (after IPCC (2013), Fig 13.19(a)). 12
- Figure 8 - Recommended engineering impact assessment procedure 24
- Figure 9 - Relationship between encounter probability, design life and average recurrence interval 34

## Appendices

- Appendix A - Basis of the NCCOE Methodology for Assessment of Climate Change Implications 59
- Appendix B - Intended Audience and Scope of Application 60
- Appendix C - Impact Assessment Interaction Matrix Template 62





# 1. INTRODUCTION

## 1.1 Background

This document updates previous climate change guidelines prepared by the National Committee on Coastal and Ocean Engineering (NCCOE 1991; refer also Appendix A herein, NCCOE 2004a and NCCOE 2012a), and is designed to complement the coastal engineering guidelines for ecologically sustainable development (NCCOE 2017) and the climate change adaptation guidelines in coastal management and planning (NCCOE 2012c). Climate science itself continues to evolve at a rapid rate and it is expected that these NCCOE climate change guidelines will continue to be updated.

In recent decades there has been a growing awareness of the potential impacts that global climate change (both natural as well as human-induced) may have, and especially its possible effects on the coastal and ocean environment. This awareness has been raised to the extent that many approving bodies now insist that climate change effects be taken into account in all new development applications. This document has been prepared to provide the coastal and ocean engineering professional with guidelines for implementing coastal zone management strategies and for facing the many engineering issues raised by the possibility of a changing global climate.

In the past (prior to the 1991 Guidelines), engineers relied on the assumption that the natural environment, although highly variable, remains statistically static and that probability distributions for prime environmental factors such as wind speed, wave height, flood frequency and sea level are unchanging with time. Efforts have therefore centred on the already difficult problem of estimating the underlying natural statistical variability of these phenomena through long term measurement programs, sophisticated numerical modelling and statistical simulation. The proven rise in carbon dioxide levels and the possibility of the Earth being subject to a changing climate over engineering timescales has brought some aspects of this basis of design into question. Extrapolation of probability distributions to exposure times very much longer than the data base may be invalid in a changing environment unless some specific account can be taken of those changes. The NCCOE believes that the weight of scientific evidence suggests that changes to climate may occur within the design life of many coastal and ocean engineering activities. Consequently, consideration of the possible impacts of climate change should be included in the design process.

*It is therefore essential that the professional coastal and ocean engineer continues to exercise good judgement in response to the possible impacts of climate change.*

The potential impacts of climate change must be considered along with existing natural variability. The timescale of the asset/project under consideration will determine the relative importance of the climate change impacts. Natural climate variability on a regional basis (setting aside human-induced climate change) remains as the single greatest source of uncertainty affecting engineering assessments of risk and in providing appropriate societal solutions by way of strategies, interventions or structures. For example, there is presently no substantiated increasing trend in the global occurrence of severe weather related events that can be locally quantified for design purposes. However, the increasing population in the coastal zone has itself significantly increased the exposure of the modern coastal society to extreme coastal events. Also, the quasi-steady ENSO (El Niño - Southern Oscillation) and the Indian Ocean Dipole phenomena, which have been the subject of intensive research and data gathering for many years, provides multi-seasonal variability that is of similar magnitude to some projected aspects of long term climate change. Our overall responses to climate change should therefore be seen as an expansion of our current methodologies, which are integral to the sustainable development and management of the coastal and ocean zone, and where natural variability and more direct and quantifiable human effects still presently dominate.

The problem of possible global climate change in a relatively short time frame highlights the lack of knowledge about many essential aspects of our complex ecosystem, raises many questions, and demands hypotheses about the possible response of systems for which we do not yet have a full understanding. Accordingly, some of the popular scientific debate remains somewhat pessimistic, with the tendency to emphasise the possible extremes rather than the more probable outcomes. The literature is diverse and extensive and can be repetitive, making casual enquiries difficult.

In spite of the enormous and growing body of scientific literature and knowledge of climate change, there are unlikely ever to be accurate predictions of its effects (in both time and magnitude) or panaceas for the possible impacts. It is therefore essential that the professional coastal and ocean engineer also continues to exercise good judgement in response to the possible impacts of climate change. The engineering profession must continue to work with the broader climate science community to improve and integrate our understanding of future climate variability.

## 1.2 Engineers Australia's Climate Change Policy

The following is an extract from Engineers Australia Climate Change Policy <sup>1</sup>.

*Engineers Australia's policy position is that increasing atmospheric greenhouse gas concentrations, including from the combustion of fossil fuels, are contributing to anthropogenic global warming and adverse changes to Earth's climate systems.*

*Engineers Australia encourages national greenhouse gas emission reduction targets to be pursued to enable transition to renewable and sustainable energy, water, transport, industry and agriculture systems.*

*Engineers Australia will work to facilitate statutory, regulatory and policy reform such as progressive Renewable Energy Targets, incentives to promote renewable and sustainable energy technologies, energy efficiency standards, transport emission limits, and incentives/disincentives to reduce dependence on fossil fuel sources. It is recognised this is part of a transitional process.*

*Engineers Australia reinforces that Engineers are critical to the implementation of long-term strategic policies addressing the inextricable link between energy generation and use, resource consumption, and climate impacts.*

*Engineers Australia's members acknowledge:*

- *Engineers have an ethical responsibility for, and play a key role in, limiting atmospheric greenhouse gas concentrations, through transformative change and innovation in engineering education, and practice.*
- *Engineers are well placed to understand and assess the viability of climate change mitigation and adaptation strategies needed to make the difference and have the practical know-how to implement these strategies.*
- *Engineers proactively participate together to address the causes and impacts of climate change as a significant ecological, social and economic risk.*
- *Reduction of the emission of greenhouse gases to the atmosphere associated with engineering activities should be accorded urgent priority in engineering endeavours.*
- *Engineers should include risk analysis and advice of the likely impacts of climate change in their work.*
- *Engineers should maintain an awareness of contemporary climate change science and advances thereof, and contribute to the refinement of knowledge and approach, to encourage the best possible engineering outcomes.*

NCCOE's climate change guidelines, although predating Engineers Australia's Policy, fall well within its ambit and provide a practical way that coastal and ocean engineers can apply this policy.

## 1.3 Content and Use

This update sets out to summarise the causes of atmospheric warming due to the enhanced greenhouse effect (refer Section 2.2.1) and identifies the key climate-sensitive factors for various types of coastal engineering activities. Guidelines are then provided that should assist an experienced coastal and ocean engineer to assess the significance of climate change for a particular situation or project using a risk-based approach. The format of this update follows the 2012 edition and the overall methodology and recommended assessment process

<sup>1</sup> [https://www.engineersaustralia.org.au/sites/default/files/climate\\_change\\_policy\\_nov\\_2014.pdf](https://www.engineersaustralia.org.au/sites/default/files/climate_change_policy_nov_2014.pdf)

remains essentially unchanged. This update also has the benefit of some updated knowledge that has become available post IPCC (2013).

The document provides:

- an introduction to climate change
- latest global scenario projections
- guidelines for response and adaptation measures
- resources for further enquiry
- a recommended methodology for engineering impact assessment
- example assessments.

The document is designed primarily for use by professional engineers, whose experience and qualifications meet or exceed those presented in Appendix B, with expertise in and responsibility for works and facilities within the coastal and ocean field. Recognised areas of speciality and experience may include:

- ports and harbours, dredging and reclamation
- breakwaters, seawalls and revetments
- sediment transport, beach nourishment
- coastal management and planning
- coral reefs and islands
- hydraulics of estuaries, rivers and canals
- water quality, mixing and dispersion
- physical hydraulic scale modelling
- numerical modelling of tides, currents, waves and storm surge
- data collection and analysis
- natural hazards risk assessment
- vessel motion analysis
- marine pipelines and offshore structures
- design criteria assessment
- meteorology and oceanography
- statistics of extremes.

*It is emphasised that this document provides guidelines only and it remains the responsibility of the user to apply appropriate professional judgement to each application.*

It is emphasised that this document provides guidelines only and it remains the responsibility of the user to apply appropriate professional judgement to each application.

## 2. CLIMATE CHANGE

### 2.1 The Intergovernmental Panel on Climate Change

The primary consensus authority on climate change is the Intergovernmental Panel on Climate Change (IPCC). The IPCC was jointly established by the World Meteorological Organization (WMO) and the United Nations Environment Programme (UNEP) in 1988. Its role is:

*“... to assess on a comprehensive, objective, open and transparent basis the scientific, technical and socioeconomic information relevant to understanding the scientific basis of risk of human-induced climate change, its potential impacts and options for adaptation and mitigation.”*

The IPCC’s First Assessment Report was completed in August 1990 and served as the technical basis for the United Nations Framework Convention on Climate Change (UNFCCC). Its objective is the:

*“... stabilization of greenhouse gas concentrations in the atmosphere at a level that would prevent dangerous anthropogenic interference with the climate system. Such a level should be achieved within a time frame sufficient to allow ecosystems to adapt naturally to climate change, to ensure that food production is not threatened and to enable economic development to proceed in a sustainable manner.”*

Since 1992, the Kyoto protocol (1997), Bali Roadmap (2007), Cancun Agreements (2010), Durban Platform for Enhanced Action (2011) and Paris Agreement (2016) have all reinforced the need to curb global greenhouse gas emissions.

The greatest single contribution to global warming since the start of the industrial revolution is deemed to be due to increases in atmospheric CO<sub>2</sub>. The inaugural NCCOE guidelines document (NCCOE 1991) reported the IPCC 1990 findings, NCCOE (2004a) reflected the Third Assessment Report (TAR) and NCCOE (2012) reflected the IPCC (2007) Assessment Report 4 (AR4). The present document reflects the revised and updated IPCC (2013) position from Assessment Report Five (AR5). Assessment Report Six is scheduled for release in 2022.

The Australian Government interpretation of the IPCC projections and impacts is provided in a number of technical and non-technical reports, through the Department of Environment and Energy, available on-line at <http://www.climatechange.gov.au>. A principal source of specifically Australian projections and potential impacts is provided in CSIRO (2015).

Many of the following extracts and summaries are derived directly from IPCC (2013) and IPCC (2014a,b) unless otherwise indicated. The discussion here is targeted towards issues that are specifically relevant to coastal and ocean engineering activities. The complete IPCC documents should be consulted by those requiring a more expansive and inclusive treatment of the subject and downloadable versions of the technical reports and summaries are freely available from <http://www.ipcc.ch>. IPCC figures here are reproduced with permission.

### 2.2 The Scientific Basis of Climate Change

#### 2.2.1 The Global Warming Process

This topic is addressed by Working Group I of the IPCC (IPCC 2013), which reports on continued progress having been made in the understanding of climate change with new data and more accurate analyses becoming available since 2007.

The earth absorbs radiation from the Sun, mainly at the surface. This energy is then redistributed by the atmospheric and oceanic circulation and radiated to space at longer ("terrestrial" or infrared) wavelengths. On average, for the Earth as a whole, the incoming solar radiation is balanced by the outgoing terrestrial radiation. Any factor that alters the radiation received from the Sun or lost to space, or which alters the

redistribution of energy within the atmosphere, and between the atmosphere, land and ocean, can affect climate. A change in the energy available to the Earth/atmosphere system is termed a *radiative forcing*.

Figure 1 schematises the Earth's estimated energy balance, which is comprised of many complex interactions. Some of the infrared radiation leaving the atmosphere originates near the Earth's surface and is transmitted relatively unimpeded through the atmosphere. The bulk of the radiation, however, is intercepted and absorbed by the atmosphere that in turn emits radiation both up and down. Most of the atmosphere consists of nitrogen and oxygen (99% of dry air) that are each transparent to infrared radiation. However, water vapour (0 to 2%), carbon dioxide, methane, ozone and some other minor gases absorb some of the surface thermal radiation. These *radiatively active* gases are also termed *greenhouse* gases because they act as a partial blanket increasing the surface temperature of the Earth above what it would otherwise be, analogous to the effects of a greenhouse. Furthermore, as the climate system warms, the atmosphere is able to hold more water vapour, which in turn increases warming; a positive feedback effect. Water, as clouds, is radiatively active but also reflects solar radiation. The overall balance of contributions remains a subject of research. The natural presence of greenhouse gases has been a positive and necessary feature of the development of life on Earth. Without heat-trapping greenhouse gases the surface would have an average temperature of  $-18^{\circ}\text{C}$  rather than our current average of  $15^{\circ}\text{C}$ .

*Without natural heat-trapping greenhouse gases the Earth's surface would have an average temperature of  $-18^{\circ}\text{C}$  rather than our current average of  $15^{\circ}$ .*

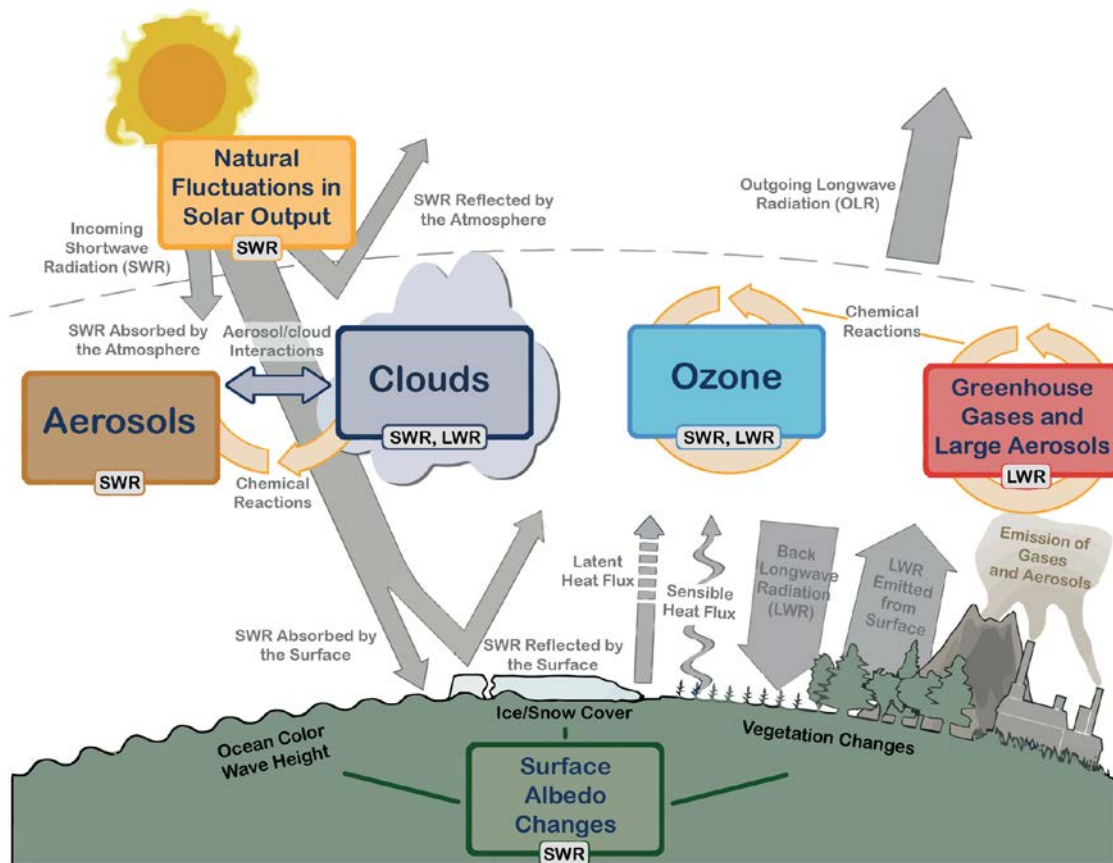


Figure 1 - Main drivers of climate change. The radiative balance between incoming solar shortwave radiation (SWR) and outgoing longwave radiation (OLR) is influenced by global climate 'drivers'. Natural fluctuations in solar output (solar cycles) can cause changes in the energy balance (through fluctuations in the amount of incoming SWR). Human activity changes the emissions of gases and aerosols, which are involved in atmospheric chemical reactions, resulting in modified ozone and aerosol amounts. Ozone and aerosol particles absorb, scatter and reflect SWR, changing the energy balance. Some aerosols act as cloud condensation nuclei modifying the properties of cloud droplets and possibly affecting precipitation (after IPCC (2013); Fig 1.1).

The climate can vary for many reasons. Human activities, in particular, can lead to changes in atmospheric composition and hence radiative forcing (RF) through, for example, the burning of fossil fuels, wide scale

deforestation or through processes that increase the number and distribution of man-made aerosols (very small airborne particles and droplets). Large scale changes in land uses that alter properties of the Earth's surface can also give rise to changes in local climate (for example, construction of cities or clearing of rain-forests). Synthetic aerosol gases such as CFCs and HCFCs are also radiatively active, but because they act to deplete stratospheric ozone levels, their net radiative forcing effect is relatively low.

The additional surface heating component of human-induced (or anthropogenic) origins is referred to as the *enhanced greenhouse* effect. Because of the relative radiative forcing potential of each of the primary gases, the principal contributing man-made effect is from CO<sub>2</sub>, the excess amounts of which can be expected to remain in the atmosphere for many decades to centuries. If CO<sub>2</sub> emissions were maintained at 1994 levels, it was estimated by IPCC (1996) that this would lead to a nearly constant rate of increase in atmospheric CO<sub>2</sub> concentrations for at least two centuries, reaching about 500 ppm (approaching twice the pre-industrial concentration of 280 ppm) by the end of the 21st century. This prediction was the basis of the commonly referred to "2 × CO<sub>2</sub>" scenario of an enhanced greenhouse world.

A warming atmosphere ultimately implies a warming ocean that, through a variety of processes, will cause an increase in mean sea level. Coupled with this is the possibility that large-scale weather patterns and extreme events might also be altered as a result of the gradual warming of the Earth.

## 2.2.2 Evidence of Climate Change

By 1995 the balance of evidence had already suggested that climate was changing and that human activity was a contributing factor (IPCC 1996). Substantial advancements in the availability, acquisition, quality and analysis of observational data sets for the atmosphere, land surface, ocean and cryosphere have occurred since the AR4 report (IPCC 2013). It is now certain that global mean surface temperature (GMST) has increased since the late 19th century.

*It is extremely likely that human influence has been the dominant cause of the observed warming since the mid-20th century (IPCC 2013).*

This conclusion is supported by the following observations:

- Each of the last three decades has been successively warmer at the Earth's surface than any preceding decade since 1850. In the Northern Hemisphere, 1983–2012 was likely the warmest 30-year period of the last 1400 years. More recently the WMO announced that globally the 2011–2015 period was the world's warmest five-year period on record and that 2015 was by far the warmest year<sup>2</sup>.
- The globally averaged combined land and ocean surface temperature data as calculated by a linear trend, show a warming of 0.85 [0.65 to 1.06] °C, over the period 1880 to 2012, when multiple independently produced datasets exist. The total increase between the average of the 1850–1900 period and the 2003–2012 period is 0.78 [0.72 to 0.85] °C, based on the single longest dataset available (Figure 2).
- Although confidence in precipitation change averaged over global land areas since 1901 is low prior to 1951, averaged over the mid-latitude land areas of the Northern Hemisphere, precipitation has increased since 1901.
- By 2011, the atmospheric concentrations of important long-lived greenhouse gases, inter alia carbon dioxide (CO<sub>2</sub>), methane (CH<sub>4</sub>) and nitrous oxide (N<sub>2</sub>O), had grown significantly: by about 40%, 150% and 20% respectively since pre-industrial times, i.e. since about 1750 (Figure 3). Concentrations of these gases now substantially exceed the highest concentrations recorded in ice cores during the past 800,000 years. The mean rates of increase in concentrations over the past century are, with very high confidence, unprecedented in the last 22,000 years.
- Over the last two decades, the Greenland ice sheets have been losing mass, glaciers have continued to shrink almost worldwide, and Arctic sea ice and Northern Hemisphere spring snow cover have continued to decrease in extent.
- The rate of globally-averaged sea level rise measured by tide gauges from 1901 to 2010 is 1.7 ±0.2 mm/y, which is unchanged from that in AR4 (Figure 4). Local variations from this global average occur at individual gauges and have inter-annual and decadal-scale variability. The global average rate of sea level rise objectively measured by TOPEX/Poseidon satellite altimetry during the period 1993 to 2010

<sup>2</sup> <http://public.wmo.int/en/resources/bulletin/highlights-from-first-five-yearly-statement-status-of-global-climate>

is  $3.2 \pm 0.4$  mm/y. These measurements are tracking closely to the projected upper limits of anthropogenic warming modelling (e.g. Church and White 2011).

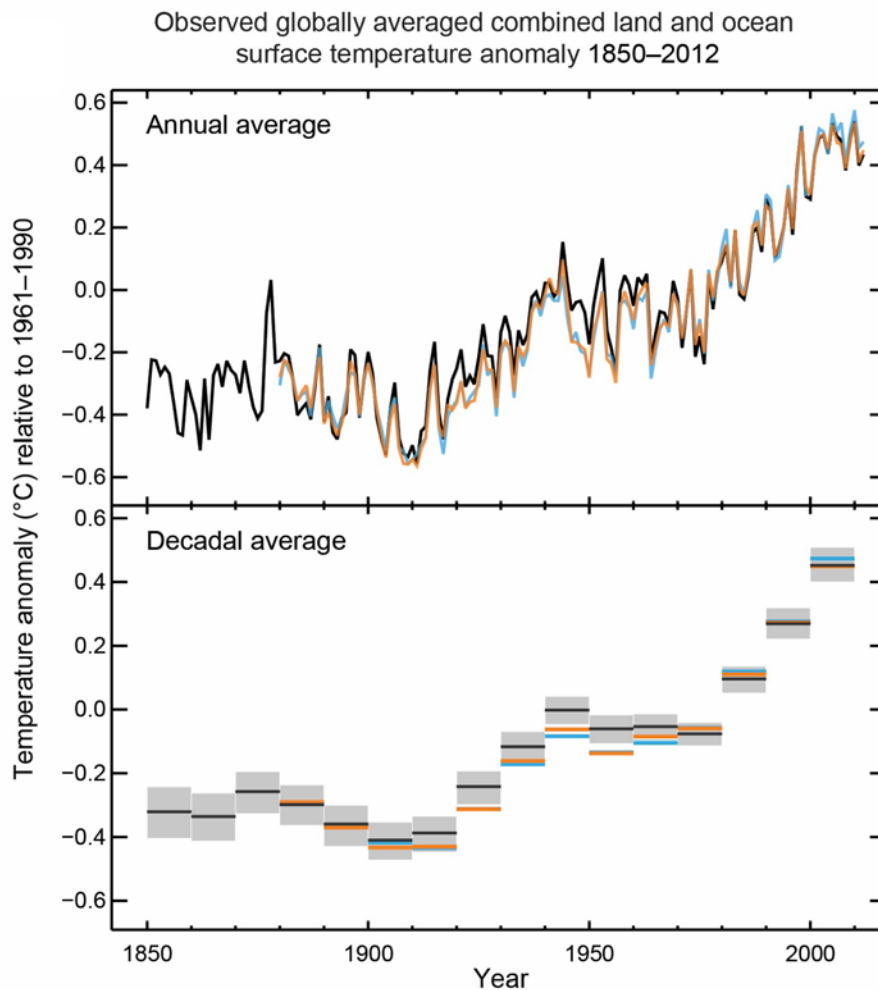


Figure 2 - Observed global mean combined land and ocean surface temperature anomalies, from 1850 to 2012 from three data sets. Top panel: annual mean values. Bottom panel: decadal mean values including the estimate of uncertainty for one dataset (black). Anomalies are relative to the mean of 1961–1990 (after IPCC (2013); Fig SPM.1(a)).

With respect to regional sea levels, the Bureau of Meteorology National Tidal Unit (NTU) has been collecting, archiving and disseminating sea level and related material for over 35 years, much of it sourced from State government agencies and the Australian Hydrographic Office (AHO). The longest reliable record is from Fremantle in Western Australia spanning over 100 years, followed by Fort Denison in Sydney Harbour with over 90 years. Of particular significance for many of these records is the high variability on a decadal timescale, with many stations recording lowering sea levels in the past decades, likely attributable to the relatively persistent El Niño condition during that time, a measure of which is indicated by depression of the Southern Oscillation Index (SOI). Since the early 1990s, the NTU has been conducting the Australian Baseline Sea Level Monitoring Project, where data are collected from an array of 14 standardised high-resolution sea level monitoring stations at representative sites around the Australian coastline. The NTU also manages the Pacific Sea Level Monitoring Project involving 14 Pacific island nations. The current state of changing mean sea level around Australia is reported in the BoM Annual Climate Report<sup>3</sup>, with Figure 5 extracted from BoM (2016). This shows the complex patterns of sea level rise determined over the past 20 years by satellite altimeter as well as the range of gauged trends. The sea level records for all precision gauges, when

<sup>3</sup> [http://www.bom.gov.au/climate/annual\\_sum/annsum.shtml](http://www.bom.gov.au/climate/annual_sum/annsum.shtml)

corrected for local land movement and changes in atmospheric pressure, show regionally increasing trends that are consistent with the satellite-based altimeters (White et al. 2014).

It can be noted that present practice in tidal prediction in Australia is that changes in MSL due to gradual SLR are being progressively included in annual predictions, but that published tidal planes remain unchanged over an epoch.

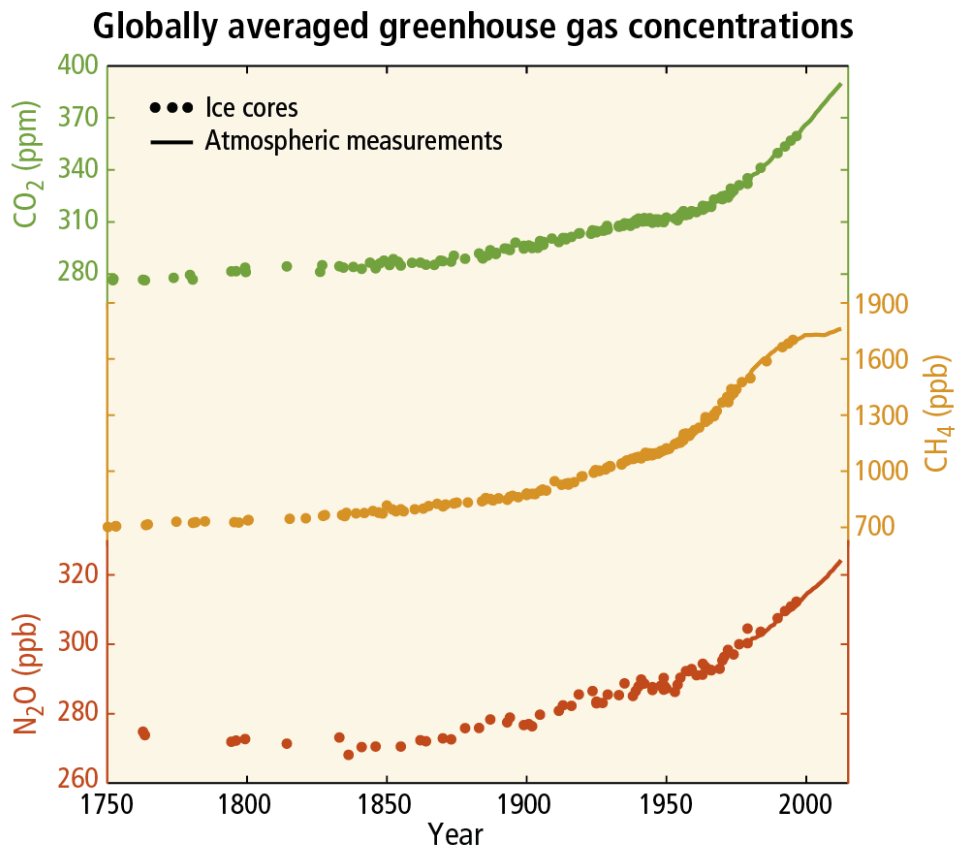


Figure 3 Observed changes in atmospheric greenhouse gas concentrations. Atmospheric concentrations of carbon dioxide (CO<sub>2</sub>, green), methane (CH<sub>4</sub>, orange), and nitrous oxide (N<sub>2</sub>O, red). Data from ice cores (symbols) and direct atmospheric measurements (lines) are overlaid (IPCC (2014c), Fig 1.3)



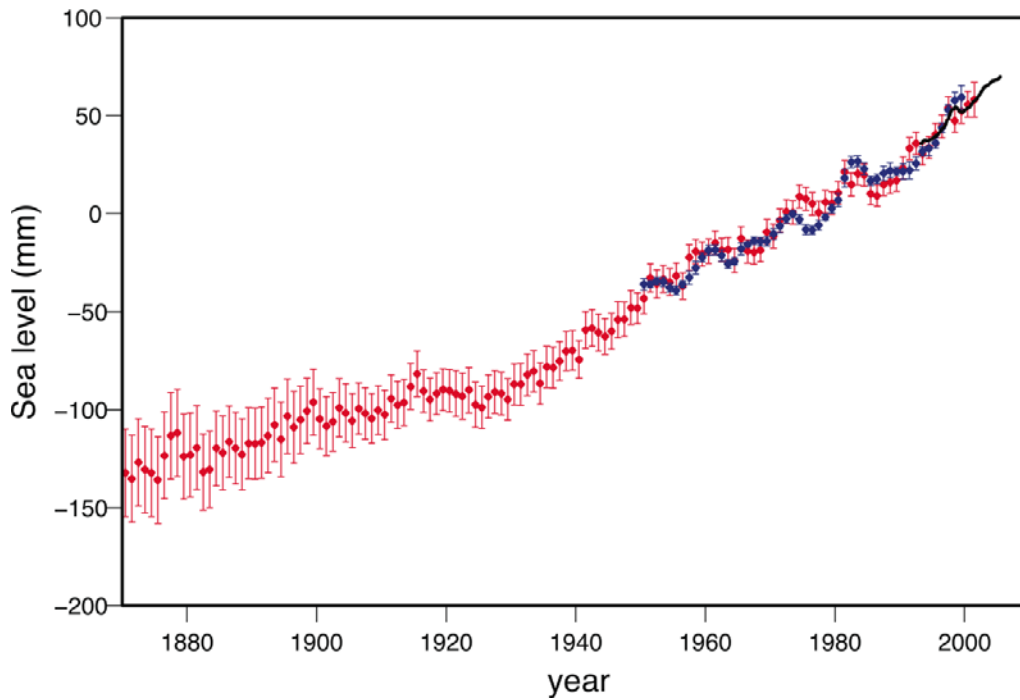


Figure 4 - Annual averages of the global mean sea level (mm). The red curve shows reconstructed sea level fields since 1870; the blue curve shows coastal tide gauge measurements since 1950 and the black curve is based on satellite altimetry. Error bars show 90% confidence intervals. (after IPCC 2007b, Fig 5.13)

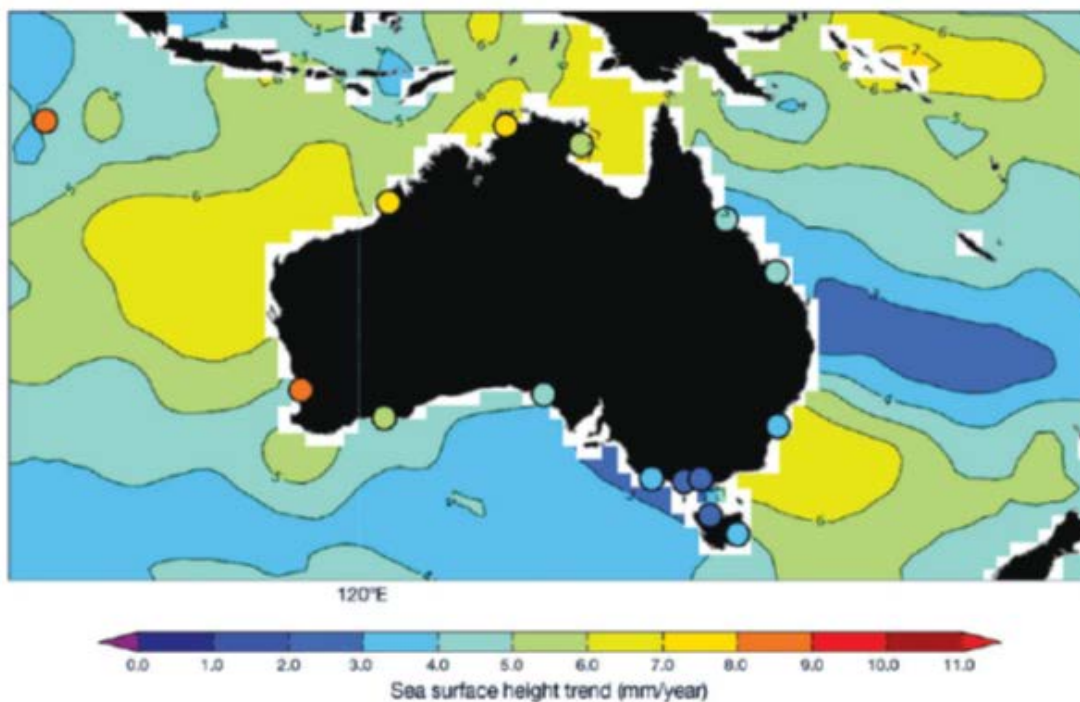


Figure 5 - 1993 to 2015 rates (mm/yr) of annual sea surface height rise measured relative to the land by coastal tide gauges (coloured dots, to November 2015) and relative to the centre of the Earth by satellites (to October 2015). (after BoM 2016)

### 2.2.3 Latest IPCC Global Projections

The AR5 report greatly expands the use of complex numerical coupled Atmosphere-Ocean General Circulation Models (AOGCMs) and now Earth Simulation Models (ESMs), which show increasing success in reproducing broad global climate behaviour. With higher resolution there has been reduced reliance on sub-grid parameterisation and ESMs include interactive biogeochemistry (at least a land and ocean carbon cycle). The Coordinated Modelling Intercomparison Project Phase 5 (CMIP5), provides the basis for most of the assessment of future climate change in AR5 and supersedes the CMIP3 modelling<sup>4</sup>. Important uncertainties remain though, especially in regard to representation of cloud physics and feedbacks. The future climate projections from these models are based on a series of modelled greenhouse gas emission scenarios, which are predicated principally on world population estimates, economic growth and consequent energy usage patterns.

The AR5 future emissions methodology now uses Representative Concentration Pathway Scenarios (RCPs) that supersede the AR4 SRES approach, which did not explicitly assume implementation of the UNFCCC recommendations or the emission targets of the Kyoto Protocol. These RCPs represent a larger set of greenhouse gas mitigation scenarios and were selected to have different targets in terms of radiative forcing (RF) at the year 2100 (about 2.6, 4.5, 6.0 and 8.5 W m<sup>-2</sup>) relative to the nominal base year of 1990<sup>5</sup>. The RCP scenarios, which are named according to these radiative forcing targets, should be considered plausible and illustrative, but do not have probabilities attached to them.

Projected climate change based on RCPs is similar to AR4 SRES outcomes in both patterns and magnitude, after accounting for scenario differences. However, the overall spread of projections for the high RCPs is narrower than for comparable scenarios used in AR4 because in contrast to the SRES emission scenarios, the RCPs are defined as concentration pathways and thus carbon cycle uncertainties affecting atmospheric CO<sub>2</sub> concentrations are not considered in the concentration-driven CMIP5 simulations. Projections of sea level rise are larger than in the AR4, primarily because of improved modelling of land-ice contributions.

#### *Land Surface Air Temperature*

The likely range of global mean surface air temperature increases relative to 1986-2005 (say 1995) based on the CMIP5 modelled RCP scenarios has narrowed and now varies between 0.3°C and 4.8°C centred on the period 2081-2100 (say 2090). It should be noted however that regional temperature changes are still likely to vary substantially from the global mean value and individual CMIP5 models still show a relatively poor correlation in this regard. In broad terms, the Arctic region is projected to warm more rapidly than the global mean, and mean warming over land will be larger than over the ocean. Accordingly, the Northern Hemisphere, with its larger land mass, is expected to warm about twice the amount of the Southern Hemisphere. In Australia, mean warming is projected to be greater than the global average in the inland but less in coastal areas, particularly in southern coastal areas in winter (CSIRO 2015). It is also important to appreciate that surface temperature is projected to continue to increase beyond 2100 even if concentrations of greenhouse gases were stabilised by that time, because of the thermal inertia of the oceans.

#### *Precipitation*

The simulation of large-scale patterns of precipitation is considered improved somewhat since the AR4, although models continue to perform less well for precipitation than for surface temperature. At regional scales, precipitation is not simulated as well, and the assessment remains difficult owing to observational uncertainties

The high latitudes and the equatorial Pacific Ocean are deemed likely to experience an increase in annual mean precipitation by the end of this century under the more extreme RCP8.5 scenario. Likewise, in many mid-latitude and subtropical dry regions, mean precipitation will likely decrease, while in many mid-latitude wet regions, mean precipitation will likely increase by the end of this century.

Extreme precipitation events over most of the mid-latitude land masses and over wet tropical regions will very likely become more intense and more frequent by the end of this century, as global mean surface temperature increases.

---

<sup>4</sup> There is overall consistency between the projections of temperature and precipitation based on CMIP3 and CMIP5, both for large-scale patterns and magnitudes of change. Understanding of the sources and means of characterizing uncertainties in long-term large scale projections of climate change has not changed significantly since AR4, but new experiments and studies have continued to work towards a more complete and rigorous characterization.

<sup>5</sup> It can be noted that the accessed total anthropogenic RF increase from 1750 to 2100 is of the order of 2.29 Wm<sup>-2</sup>.

## Sea Level Rise

Confidence in projections of global mean sea level rise has increased since the AR4 because of the improved physical understanding of the components of sea level, the improved agreement of process-based models with observations (compared with earlier semi-empirical models) and the inclusion of ice-sheet dynamical changes.

Global mean sea level rise for 2081–2100 relative to 1986–2005 (Figure 6) will likely be in the ranges of 0.26 to 0.55 m for RCP2.6, 0.32 to 0.63 m for RCP4.5, 0.33 to 0.63 m for RCP6.0, and 0.45 to 0.82 m for RCP8.5. For RCP8.5, the rise by the year 2100 is 0.52 to 0.98 m, with a rate during 2081 to 2100 of 8 to 16 mm yr<sup>-1</sup>. These ranges are derived from CMIP5 climate projections in combination with process-based models and literature assessment of glacier and ice sheet contributions.

The main contributions to this projected rise are thought to be, in order of decreasing contribution:

- an accelerating thermal expansion throughout the 21<sup>st</sup> century
- the melting of glaciers and ice caps
- retreat of the Greenland ice shelf.

*The central estimate is that sea level will rise by about 0.5m by the year 2090, with a likely range from 0.26 to 0.82m.*

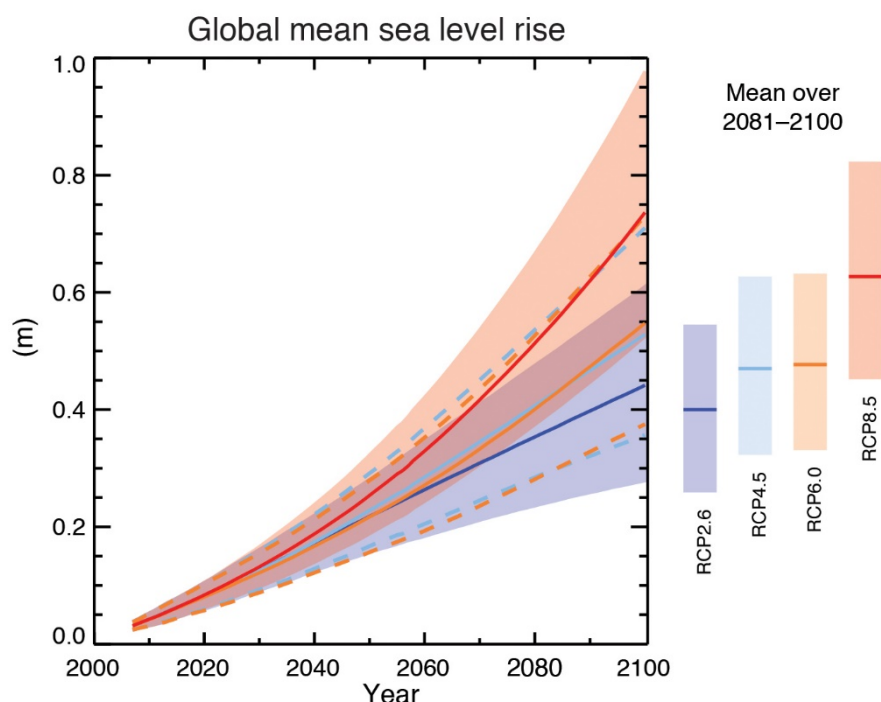


Figure 6 - from process-based models of global mean sea level (GMSL) rise relative to 1986–2005 for the four RCP scenarios. The solid lines show the median projections, the dashed lines show the likely ranges for RCP4.5 and RCP6.0, and the shading the likely ranges for RCP2.6 and RCP8.5. The time means for 2081–2100 are shown as coloured vertical bars (IPCC (2013), Fig TS.22).

It can be noted that the projected annual rate of rise of sea level by the end of the century is considerable and AR5 provides a specific 2100 estimate for each RCP. This is presented in Table 1 in terms of the upper, central and lower projected ranges, together with nominal 2050 values for completeness.

In respect of regional variations, models agree on the qualitative conclusion that local changes may be substantial when compared with the global average. Beyond that, there is little similarity between the models in detail. Like temperature, nearly all models project greater than average sea level rise in the Arctic Ocean and below average rise in the Southern Ocean (Figure 7). Sea level projections for the Australian coastline by 2090 are comparable to, or slightly larger than (by up to about 6 cm), the global mean sea level projections (CSIRO 2015).

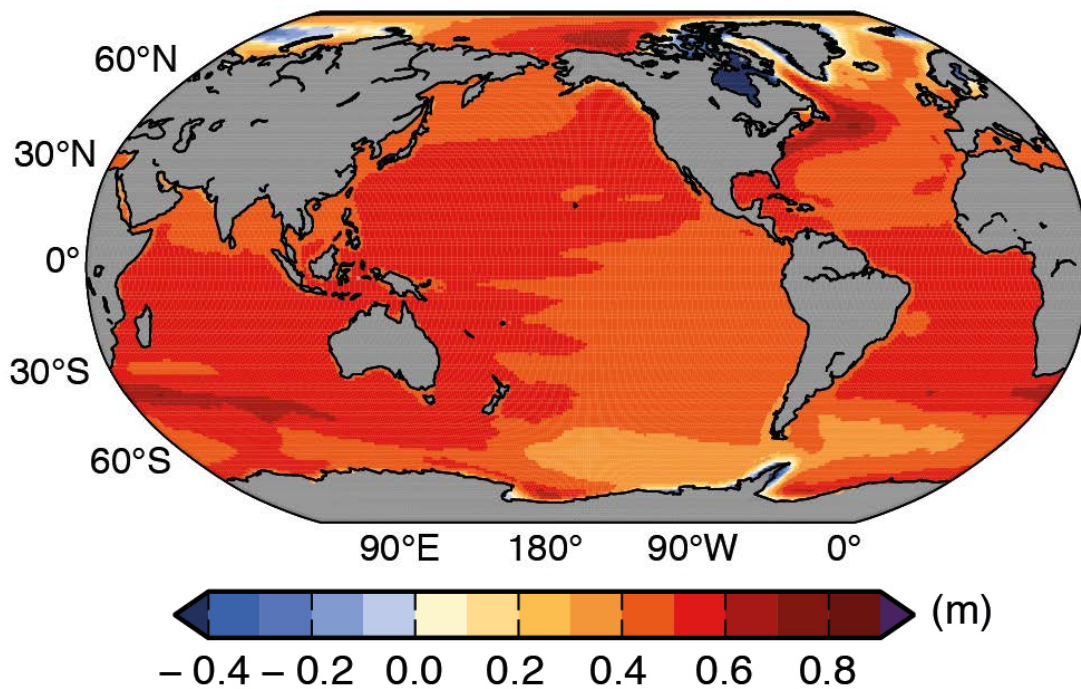


Figure 7 - Ensemble mean regional relative sea level change (m) evaluated from 21 models of the CMIP5 scenario RCP4.5, including atmospheric loading, plus land-ice, glacial isostatic adjustment and terrestrial water sources, between 1986-2005 and 2081-2100 (after IPCC (2013), Fig 13.19(a)).

It is deemed virtually certain (IPCC 2014c) that global mean sea level rise will continue for many centuries beyond 2100, with the amount of rise dependent on future emissions. The threshold for the loss of the Greenland ice sheet over a millennium or more, and an associated sea level rise of up to 7 m, is greater than about 1°C (with low confidence) but less than about 4°C (with medium confidence) of global warming with respect to pre-industrial temperatures. Abrupt and irreversible ice loss from the Antarctic ice sheet is possible, but current evidence and understanding is insufficient to make a quantitative assessment.

Table 1 - Projected global mean sea level increase allowances by 2050 and 2100 suitable for engineering design (IPCC values rounded to 1 decimal point).

RCP Scenario Ranges	2050 (m)	2100 (m)
upper	0.4	1.0
central	0.3	0.6
lower	0.2	0.3

## 2.2.4 Major Weather Systems and Global Climate Change

There are many complex interactions within the global climate system that are intrinsically linked to the deep ocean circulation. For example, the thermohaline circulation, with a timescale of many thousands of years, is a massive regulator of global temperature and is thought to play an important role in many other observed multi-decadal climate fluctuations (refer Section 2.3.2). However, the present discussion is limited to those features of typically decadal timescales or less, which are likely to have a more immediate impact on Australian climate.

### *El Niño - Southern Oscillation (ENSO)*

The El Niño - Southern Oscillation, which originates in the tropical Pacific Ocean, is one of the strongest natural fluctuations of climate on inter-annual timescales and is also believed to influence decadal timescales. ENSO is generated by ocean-atmosphere interactions such that positive sea surface temperature anomalies in the eastern equatorial Pacific (a so-called El Niño event) tend to reduce the normally high temperature difference across the Pacific. This results in a reduction of the easterly trade winds and a lowering of sea

levels in the west and a rising in the east by as much as 0.25 m. During an El Niño, the Australian east coast typically experiences below-average sea surface temperature and the incidence of tropical cyclones is also significantly reduced as the zone of tropical cyclogenesis typically moves more eastward. However, because of the oscillating ocean-atmosphere interactions a reverse phase or La Niña can also occur, whereby Australia experiences higher sea level and sea surface temperatures, with a greater incidence of coast-crossing tropical cyclones along the eastern seaboard.

The relative incidence of El Niño and La Niña episodes over the past 120 years typically suggests a chaotic system where the relative proportion of each extreme is similar. However, during the past two decades, there has been a much higher occurrence of El Niño events due to a general warming of the eastern Pacific.

There is high confidence that the El Niño-Southern Oscillation (ENSO) will remain the dominant mode of interannual variability in the tropical Pacific, with global effects in the 21st century. Due to the increase in moisture availability, ENSO-related precipitation variability on regional scales will likely intensify. Natural variations of the amplitude and spatial pattern of ENSO are large and thus confidence in any specific projected change in ENSO and related regional phenomena for the 21st century remains low.

#### *Indian Ocean Dipole*

The so-called Indian Ocean Dipole (IOD) is characterised by changes in Sea Surface Temperature off the Sumatra coast in the eastern Indian Ocean basin and changes of the opposite sign in the west of the basin (CSIRO 2015). Low SST in the east (and high in the west) is known as the positive phase of the IOD and comes about when south-east winds off the north-west of Australia induce upwelling in the eastern Indian Ocean. The IOD is usually active from May to November and is often terminated by the wind reversal accompanying the arrival of the monsoon in northern Australia. A positive IOD can lead to below average rainfall in winter and spring over central and southern Australia and a negative IOD can lead to above average rainfall in the same areas, when eastern Indian Ocean SSTs are above average.

Many of the Australian impacts of the IOD are independent of ENSO, but certain ENSO and IOD phases tend to occur concurrently. Meyers et al. (2007) found that positive IOD events are more likely during El Niño years and negative IOD events were more frequent during La Niña. They found that a negative IOD is associated with droughts in Indonesia, reduced rainfall over parts of Australia, intensified Indian summer monsoon and anomalous climate in the extra-tropical Southern Hemisphere (IPCC, 2013). The overall frequency of IOD events (positive and negative) is not projected to change in future climates.

#### *Monsoons*

The annual monsoon results from the seasonal large-scale overturning of the atmosphere in the tropics and sub-tropics. Rapid land heating draws low level maritime air inland where convection and release of latent heat causes a circulation to develop which, in addition to the large-scale precipitation, also causes a surge in the wind patterns in tropical areas.

Globally, it is likely that the area encompassed by monsoon systems will increase over the 21st century. While monsoon winds are likely to weaken, monsoon precipitation is likely to intensify due to the increase in atmospheric moisture. Monsoon onset dates are likely to become earlier or not to change much. Monsoon retreat dates will likely be delayed, resulting in lengthening of the monsoon season in many regions. There is medium confidence that overall precipitation associated with the Asian-Australian monsoon will increase but with a north-south asymmetry, but projected changes in the Australian summer monsoon rainfall are small.

#### *Tropical Cyclones*

Any significant modifications to the behaviour of tropical cyclones (TCs) in a changed climate could have especially damaging impacts for some regions of northern Australia, especially closest to the present margins of TC exposure. In the context of coastal and ocean engineering, the potential exists for changing extreme wind, wave and current environments to perhaps adversely affect existing infrastructure where design conditions have been based on estimates from the historical dataset. In terms of loss of life, storm surges and their resulting storm tides represent the single greatest threat to our rapidly growing coastal populations (Harper 1999; Dube et al. 2010).

The role and behaviour of TCs in future climates continues to be monitored by the WMO Tropical Meteorology Research Programme TMRP Committee TC2 (Impact of Climate Change on Tropical Cyclones). The consensus view from that process is reflected in AR5 and currently remains largely<sup>6</sup> as given by Knutson et al. (2010), summarised in part as follows:

- There is no definitive evidence at this time that (globally) TCs are getting stronger, or are becoming more frequent or producing greater rainfall. Some specific ocean basins have been experiencing changes in frequency, which is not unusual on decadal time frames. The North Atlantic has seen recent decadal increases reach levels similar to that experienced in the 1950s, while the Western North Pacific and parts of Australia experienced fewer TCs than in the 1970s.
- The most intense TCs may have the opportunity to develop up to 11% stronger peak winds by the year 2100<sup>7</sup> and the relative proportion of the most intense TCs would likely increase as a result (e.g. Category 4+)
- The global frequency of TCs may decrease by up to 34% due to a more unfavourable state of environmental shear, with marked reductions projected for Eastern Australia (CSIRO 2015). The extent of TC influence is not expected to greatly change.
- Rainfall rates are likely to increase in line with water vapour concentration. The projected magnitude is of the order of +20% within 100 km of the TC centre.

*... future projections based on theory and high-resolution dynamical models consistently indicate that greenhouse warming will cause the globally averaged intensity of tropical cyclones to shift towards stronger storms, with intensity increases of 2–11% by 2100. Knutson et al. (2010)*

While the above assessment provides some reassurance against markedly changed threats from TCs, it must be appreciated that reliable design criteria for coastal and ocean structures throughout tropical Australia are still very limited. Much more work is needed to quantify these existing design risks, irrespective of future climate change scenarios. For example, Harper et al. (2008) demonstrated the need for review of historical TC intensities in the Australian region to help remove biases resulting from changes in observational techniques over time. Meanwhile the recent past dominance of El Niño has typically seen a marked decrease in TC frequency across north-eastern Australia (e.g. Callaghan and Power 2011).

#### *Mid-Latitude Weather Systems*

The southern part of the Australian continent is affected by a number of extratropical weather features and modes of variability in the mid-latitudes (CSIRO 2015). This is dominated by persistent high pressure systems that form the subtropical ridge (STR) and, to the south, the passage of fronts driven by the band of strong westerly winds encircling Antarctica. The northern extent of the westerlies can shift north and south on a range of timescales, influencing rainfall variability across southern Australia. The north-south shift in the westerlies and the low pressure systems is also part of the hemispheric mode of variability known as the Southern Annular Mode (SAM). Continental low pressure systems can develop in the region to the north of the westerlies and intensify on the eastern Australia coast as so-called East Coast Lows, causing often significant coastal and ocean impacts from southern Queensland down to Bass Strait (e.g. Mills et al. 2010).

There is no compelling evidence to suggest that the characteristics of extratropical storms in general have changed, although Alexander et al. (2011) reports an apparent decline of such events since 1890 in south-eastern Australia. There is little agreement between climate models concerning future changes.

Notwithstanding weak evidence for possible changes in frequency or severity of intense large scale storms, there may be slight southerly shifts in the mean seasonal synoptic patterns (CSIRO 2015) that could affect regional wind speeds and directions. This in turn could change the distribution of the wave-energy flux presently shaping the coastline.

---

<sup>6</sup> Personal communication, T. Knutson.

<sup>7</sup> This is approximately equivalent to up to a 20% increase in central pressure deficit by 2100.

## 2.3 Impacts, Adaptation and Vulnerability to Climate Change

### 2.3.1 General

These issues are addressed by Working Group II of the IPCC (IPCC 2014a,b), focussing on a three-tiered approach to the problem, viz...

1. How *sensitive* a particular system might be to climate change
2. How *adaptable* that system appears to be, and
3. How *vulnerable* the system ultimately is to climate change.

*In the oceans, climate change will be accompanied by changes in temperature, circulation, sea level, ice coverage, wave climate and possibly extreme events.*

### 2.3.2 The Oceans

Oceans occupy about 70% of the earth's surface. They provide an important component of the climate system, due to their role in controlling the distribution and transfer of heat and CO<sub>2</sub> and in the transfer of freshwater back to the continents as precipitation. The oceans function as regulators of the Earth's climate and sustain planetary biogeochemical cycles. They have significant capacity to store heat and are the largest reservoir of the two most important greenhouse gases - water vapour and carbon dioxide. About 60% of the Earth's radiative energy from the Sun is received by the oceans, 80% of that being absorbed within the top 10 m.

Winds and waves mix down a seasonal surface layer of nearly uniform temperature, salinity and other properties that extends to tens of metres in the tropics and to several hundred metres in higher latitudes (the so-called upper thermocline). The permanent (lower) thermocline lies below the seasonal surface layer, down to about 1000 m. While wind-driven circulation dominates the upper ocean mixing, manifesting as basin-scale gyres and intensive western boundary currents, the deeper ocean circulation is controlled by thermohaline processes (density currents, internal waves, etc.). The lower thermocline and abyssal ocean represents nearly 90% of the volume of the oceans and most of this water is colder than 5°C. The oceans contain about 60 times more carbon than the atmosphere and variations in atmospheric carbon dioxide could result from even minor changes in the ocean's carbon cycling process, which is related to the ocean circulation. Sea ice covers about 11% of the ocean and affects surface reflection of energy, salinity and ocean-atmosphere thermal exchange.

In the oceans, climate change will be accompanied by changes in temperature, salinity, acidification, circulation, sea level, ice coverage, wave climate and possibly extreme events:

- Sea surface temperature (SST) increases are likely to be less than air temperature increases and to lag continental air temperature increases by as much as 10 years, before rising at a similar rate.
- Changes in SST gradients are expected to lead to a decrease in trade wind intensity, a reduction in strength of upper ocean currents and a decrease in areas and intensity of upwelling.
- Because of a lack of basic understanding of the present interactions, it is still premature to project the behaviour of ENSO events for different climate changes.
- Available estimates of future sea level rise are uncertain but will likely occur due to ocean thermal expansion, changing volumes of polar and glacial ice sheets, dynamical ocean circulation effects, altered wind and weather patterns and differences in regional ocean density.
- Even the lower estimates of global average sea level rise rates by 2100 are about 2 to 4 times the rate of sea level rise experienced in the last 100 years.
- Projected changes in climate could produce large reductions in the extent, thickness and duration of sea ice.
- Present numerical weather models suggest there is likely to be an increase in the intensity of the most severe tropical cyclones over time [refer Section 2.2.4] but that the overall frequency may reduce.
- Some corals are likely to be adversely affected through increased acidity, SST and SLR, possibly UVB exposure due to ozone depletion, leading to increased bleaching and a reduction in coral production.
- Many calcifying marine organisms and reefs would be disadvantaged by increased ocean acidity, which inhibits skeletal and shell growth, particularly for juveniles. Conversely, other species may have marginal advantage in these circumstances.

### 2.3.3 Coastal Zones and Small Islands

It is estimated that 50 - 70% of the global human population (86% of Australians (RAC 1993)) live in the coastal zone, where important socioeconomic activities include resource exploitation (living and non-living), industry and commerce, infrastructure development, tourism, recreation and nature conservation. In most coastal nations, a considerable part of gross national product is derived from activities connected with the coastal zone. Many coastal problems presently being experienced worldwide can be attributable to the unsustainable use and unrestricted development of coastal areas and resources. Climate change is likely to pose an additional stress on these areas, with sea level rise and possible changes in the frequency and intensity of extreme events being of prime concern. In addition to the physical changes that are possible, climate change has the potential to significantly affect coastal biological diversity through alteration of habitat.

*86% of Australians live in the coastal zone. (RAC 1993)*

The following are the major aspects of concern to the coastal zone and small islands:

- Any changes in sea level are expected to vary from the global mean over regional and local scales due to (i) vertical land movement e.g. subsidence, upheaval and (ii) dynamical ocean effects due to circulation patterns, wind and pressure distributions and density differences. These are effects that already dictate global variation in mean sea level but the possible changes caused by a warming climate are unknown at this stage.
- A 2°C change in average SST would mean that values presently considered anomalous (of the order of peak ENSO fluctuations) could well be normal occurrences, with resultant long-term stress on natural ecosystems that are unable to effectively adapt.
- Increased precipitation is expected throughout the year in high-latitudes and during the winter in mid-latitudes, possibly increasing coastal deposition rates. Some increase in Asian monsoon rainfall is also predicted.
- Changes in storm patterns or general shifts in mean weather conditions (windiness, wave energy and direction) are not able to be reliably estimated at this time but could have significant long term impacts on coastal stability and alignments (e.g. Slott et al. 2006).
- Any potential increase in the frequency, magnitude or extent of very severe weather systems such as tropical cyclones could severely impact some coastal regions, with the potential for loss of life and significant impacts on coastal ecosystems and morphology. The present projections show a low likelihood of significant changes occurring for tropical and extratropical cyclones, with reduced TC frequency potentially offsetting risks from increased intensity in many areas. Low reef-fringed islands may also be especially susceptible to any increase in the magnitude of wave-induced setup (e.g. Gourlay 1997).

The possibility of sea level rise alone forms a basis for considering a number of major impacts for the coastal zone, such as:

- inundation and displacement of wetlands and lowlands
- eroded shorelines
- increased coastal flooding by storms
- salinity intrusion of estuaries and aquifers
- altered tidal ranges, prisms and circulation in estuarine systems
- changed sedimentation patterns
- decreased light penetration.

While it is instructive to devise relatively simple models of land-sea boundary shifts based on water level changes alone, the actual impacts of sea level rise at specific locations are likely to be very complex. For example, the responsiveness of geomorphological and ecological processes will largely dictate the local outcomes, necessitating a consideration of the specific coastal environments that are at risk, e.g.

#### *Sedimentary coasts, sandy beaches, barriers and dunes*

- About 20% of the world's coasts meet this general classification (24% of Australia). The short to medium term dynamics of these types of coasts have been extensively studied by coastal engineers and a range of modelling tools are available. In spite of this it still remains an area of considerable uncertainty in quantitative terms. In the longer term, availability and rate of sediment supply remain largely unknown and geological timescale analyses (e.g. Holocene stratigraphical reconstructions) represent relatively slowly varying scenarios relative to present sea level rise predictions.



- It is likely that under future sea level rise, there will be a tendency for currently eroding shorelines to erode further, stable shorelines to begin to erode and accreting coasts to wane or stabilise (e.g. Brunn 1962).

#### *Deltaic coasts, estuaries and lagoons*

- Deltaic coasts are particularly susceptible to any acceleration in the rate of sea level rise and storm frequency and intensity. Most major delta regions of the world are already subsiding through consolidation of sediment, have highly developed infrastructure and are heavily populated. Submergence is clearly likely under an increasing sea level scenario and progradation of deltaic coastlines will likely be curbed through increased erosion, except in those areas characterised by significant inner-shelf sand bodies or where sediment supply may increase due to increased precipitation.
- In river and estuary systems, changes in mean water level may affect tidal propagation (range and prism effects) and changed circulation patterns are possible that will modify sedimentation processes. Saltwater penetration will increase, raising groundwater levels and may have adverse impacts on freshwater extraction from some coastal aquifers.

*It is likely that under future sea level rise, there will be a tendency for currently eroding shorelines to erode further, stable shorelines to begin to erode and accreting coasts to wane or stabilise.*

#### *Coastal wetlands*

- Coastal wetlands are normally associated with deltas and estuaries. Any loss of sediment supply and increase in wave energy may therefore have impact on these environments in a significant way. Loss of seaward boundaries of salt marshes and mangrove forests may result in major loss of ecosystem and natural foreshore buffering where it has been backed by land-based construction for flood protection or other defences. In still-natural environments there may be some opportunity for landward migration at a rate commensurate with sea level rise, depending on the sediment supply.
- The behaviour of seagrasses extending sub-tidally is less well predicted.

#### *Coral reefs and reef islands*

- Coral reefs and reef islands appear especially susceptible to climate change and associated sea level rise and increased ocean acidity. The impacts on these systems can be best divided into biological and physical. For many low-lying coral atolls, the physical changes as a result of sea level rise are perhaps the most immediate threat. Higher sea levels over the next century will increase erosion of the coastline, inundation and flooding of low lying areas and seawater intrusion into groundwater lenses will all act to reduce the habitability of such islands. However, individual responses are likely to vary greatly as a result of sediment availability, present elevation, aquifer characteristics and general resilience of the natural systems.
- The biological systems that support these islands in terms of sediment supply and ecosystem services for the inhabitants are most threatened by changing ocean chemistry and temperature rather than sea level rise. Significant climate change impacts on corals are expected to be caused by warmer sea surface temperatures and increasing ocean acidification. Coral bleaching occurs when SST rises above a certain threshold; an annual or bi-annual exceedance of bleaching thresholds is projected for most coral reefs by 2030-2050. It is estimated that warm water coral cover has reduced globally by about 30% or higher in recent decades due to more frequent exposure to high SST (Wilkinson, 2004; Hoegh-Guldberg, 2005). Additionally, ocean acidification reduces rates of coral calcification, weakening coral skeletons and causing erosion of reef frameworks. The sensitivity of corals to these impacts may inhibit their ability to cope with other environmental changes<sup>8</sup>.

## 2.4 Possible Response Strategies

The following provides an overview only of the basic approaches. The reader is referred to NCCOE (20117) "Climate Change adaptation guidelines in coastal management and planning" for a detailed treatment specifically tailored to Australian conditions.

<sup>8</sup> This passage has been adapted from the IPCC AR4 Working Group II report on impacts on coral reefs.

## 2.4.1 Adaptation Options

The IPCC process identified the four major areas of concern regarding sea level rise as:

- inundation and increased flooding of low-lying islands
- inundation and increased flooding of densely populated deltaic areas
- loss of coastal wetlands, their ecosystems and protective physical buffering
- erosion of developed sandy coasts.

There is potentially a wide array of adaptation options that can be employed in response to actual climate change threats. The IPCC presents a simple set of three strategy options, namely retreat, accommodate or protect, often called the adaptation hierarchy, which serve to illustrate the basic range of possible responses:

*The Options:*

*Retreat ...*

*Accommodate ...*

*or*

*Protect ...*

### 1) *Retreat*

Emphasis is on abandonment of land and structures in highly vulnerable areas and resettlement of inhabitants, e.g.:

- preventing development in areas near threatened coastal areas
- conditional approvals and phasing-out of development
- withdrawal of government subsidies.

### 2) *Accommodate*

Emphasis is on conservation of ecosystems harmonised with the continued occupancy and use of vulnerable areas and adaptive management responses, e.g.:

- advanced planning to avoid worst impacts
- modification of land use, building codes
- protection of threatened ecosystems
- strict regulation of hazard zones
- hazard insurance.

### 3) *Protect*

Emphasis is on defence of vulnerable areas, population centres, economic activities, infrastructure and natural resources, e.g.:

- hard structural options such as
  - dykes, levees, flood barriers
  - sea walls, revetments, groynes
  - saltwater intrusion barriers
- soft structural options such as
  - beach nourishment
  - dune restoration
  - wetland creation
  - littoral drift make-up
  - afforestation.

The choice of adaptation will vary greatly depending on the circumstances of the threat, the vulnerability of the region, the ownership or tenure of the affected land and the capacity of the responsible authority or nation. Effective solutions will be site dependent and require an experienced professional understanding of the coastal processes and hazards operating for that area. The uncertainty associated with future climate and sea levels favours a risk-based adaptive management approach with preference given to “no regrets” strategies that yield benefits even in the absence of climate change. Consideration should be given also to favouring reversible and flexible options, buying “safety margins” in new investments, promoting soft adaptation strategies, including long-term planning, and reducing decision time horizons (or effective asset life), as outlined by Hallegatte (2009).

Adaptation can exploit the fact that coastal infrastructure is rarely static and will undergo major refurbishment or replacement on time scales of 25 to 30 years, thus providing many opportunities to adapt structurally. Maintaining the security and integrity of the land on which the development and infrastructure lies requires up-front long-term consideration. However, early allowance in design, development approvals and planning

will significantly reduce the total cost to the community and provide sustainable or even enhanced environmental outcomes. It should be noted though, that sea levels might continue to rise above those predicted by present day scenarios.

### 2.4.2 Implementation

The threats of possible climate change upon the coastal zone have similar implications to the more direct impacts of human development pressures on the coastal environment, which are already measurable through increased pollution, loss of habitat or altered ecosystems.

The practice of Integrated Coastal Zone Management (ICZM) has the capacity to provide appropriately managed and planned solutions to these direct human impacts and the indirect threats of climate change. ICZM can provide an environment for comprehensive assessment, setting of objectives, planning and management of coastal systems and resources, while taking into account traditional, cultural, and historical perspectives and conflicting interests and uses.

Some of the essential prerequisites for effective ICZM are:

- initial leadership for the planning process
- provision of institutional arrangements
- technical capacity, and
- management instruments and tools.

A proactive approach to ICZM is a key component for accommodating the long-term effects of climate change and NCCOE (2017, 2012,c) provide advice on such matters within the overall context of ecologically sustainable development of the coastal zone. The coastal and ocean engineer has the technical capacity and practical approach necessary to ensure effective planning methodologies are adopted within this context, thus providing an essential leadership role.

The latest globally relevant studies are accessible through IPCC (2014a,b) and Section 3 indicates various specific Australian studies.

## 3. THE AUSTRALIAN CONTEXT

### 3.1 Research Environment

The principal climate change science research effort since 1989 has been through the Australian Government's Australian Climate Change Science Programme, which is designed to support Australia's national climate science priorities. The programme is jointly run by the Department of the Environment and Energy, CSIRO and the Bureau of Meteorology, who also work with a range of universities, researchers and scientific organisations from Australia and around the world. These include the ARC Centre of Excellence for Climate System Science, established in 2011. The Australian Government produces and commissions a wide range of materials in regard to the state of the science, impacts and adaptations (e.g. Allen Consulting 2005, NRMCC 2006, DCC 2009a,b, CSIRO 2015). Various State government departments (typically with climate change, environment or primary industry responsibilities) and numerous university-based researchers and some private consultants also contribute to climate science-related efforts.

In the adaptation context, the National Climate Change Adaptation Research Facility (NCCARF) was established in mid-2008 as a consortium led by Griffith University together with 8 Australian universities and the Queensland Government. Its mission has been to develop and deliver knowledge needed by decision-makers to effectively adapt Australia to the impacts of climate change. NCCARF hosts several "Adaptation Networks", with the Australian Climate Change Adaptation Research Network for Settlements and Infrastructure (ACCARNSI), which is hosted by the School of Civil and Environmental Engineering at UNSW, having a specific engineering focus.

As the science of climate change is continually changing, the latest published sources should always be sought for use in any detailed studies<sup>9</sup>. All regional projections must still be viewed within the context that, relative to their assessed global performance, climate models are considered to still have significantly reduced skill at sub-continental scales. Where available, local data and records should always be sourced and reviewed.

### 3.2 Coastal and Ocean Impact Studies

Australia has a strong research background in climate change and associated oceanographic and atmospheric phenomena. Some recent studies are mentioned here and others of potential interest are listed in Section 8.8.

Ryan et al. (2003), Voice et al. (2006), AGO (2006), Abuoda and Woodroffe (2007), Harper (2008), Harvey and Woodroffe (2008) and Woodroffe (2008) provide frameworks and overviews of interest to the coastal and ocean context. Heap et al. (2001) and Harris et al. (2002) consider ecosystem management and classification of coastal environments. Attwater et al. (2008) consider adaptive responses in a planning context and Sharples et al. (2008) presents a tiered approach to risk assessment. Ranasinghe and Stive (2009), Ranasinghe et al. (2007, 2009a,b) and Stive et al. (2009) focus on sea level rise and coastline recession. Callaghan et al. (2008a,b) present methods to derive probabilistic estimates of storm erosion for coastal planning. McInnes et al. (2007) and Hemer et al. (2008, 2009) considers climate change driven variations in the offshore wave climate and implications for coastal vulnerability. McInnes et al. (2016) is a useful summary of the natural hazards elements from CSIRO (2015).

In regard to tropical cyclone storm surge, the Queensland Climate Change Study (Harper 2001, 2004) provides technical recommendations and specific projections of changing risks along the East coast for tropical cyclone conditions and McInnes et al. (2003) consider a specific scenario for Cairns. Harper et al. (2009) provides a summary of a range of potentially relevant Australian studies and there are many Local Government commissioned studies (refer Section 8 for State-specific projects and links). For example, Harper et al. (2013a) provides an overview of the Townsville coastal hazard adaptation study (CHAS) that integrates natural hazards risk with the planning environment. Harper et al. (2013b) outlines the recent Gulf of Carpentaria investigation that included future climate change impacts.

---

<sup>9</sup> <http://www.climatechange.gov.au>; <http://www.cawcr.gov.au/projects/climatechange/>; <http://www.nccarf.edu.au>

For non-cyclonic impacts Church et al. (2006) considers extreme events and Hunter (2009) is useful where tidal records are sufficiently long in non-cyclonic regions. Haigh et al. (2013, 2014) address cyclonic and non-cyclonic storm tide risks around Australia but do not include climate change considerations.

### 3.3 Government Policies

This remains an area of significant flux and readers should ensure that they have the latest relevant information in this regard. Table 2 below summarises current Government policies. These will continue to be revised and the practitioner should familiarise themselves with the latest jurisdictional position.

Table 2 - Sea level rise allowances relative to 1990 base level for each Government constituency at 30<sup>th</sup> Nov 2016

Jurisdiction	2050	2100	Comment / Basis
	m	m	
Commonwealth		1.1	Adopted for national vulnerability assessment DCC (2009b) but there is no nationally legislated requirement. <a href="http://www.environment.gov.au/climate-change/adaptation/publications/climate-change-risks-australias-coasts">http://www.environment.gov.au/climate-change/adaptation/publications/climate-change-risks-australias-coasts</a>
New South Wales	-		Former Benchmark Levels of 0.4 m by 2050 and 0.9 m by 2100 (representing state-wide upper limit values) were withdrawn in September 2012 to permit values more responsive to local conditions. NSW Government no longer prescribes sea level projections but rather gives Councils the flexibility to determine their own projections that are widely accepted by competent scientific opinion and the best available knowledge for their local conditions and the needs of their communities (NSW Dept. Environment and Heritage, AdaptNSW, Sea levels and Coasts).
Northern Territory		0.8	Includes allowance for 10% increase in tropical cyclone intensity by 2100.
Queensland	0.3	0.8	State Planning Policy (29 April 2016): <a href="http://www.dilgp.qld.gov.au/resources/policy/sdap/sdap-module-10-v-1-8.pdf">http://www.dilgp.qld.gov.au/resources/policy/sdap/sdap-module-10-v-1-8.pdf</a> Includes allowance for 10% increase in tropical cyclone intensity by 2100. Guidance given for all decades between 2050 and 2100.
South Australia	0.3	1.0	Policy on coast protection and new coastal development 1991 ( <a href="http://www.environment.sa.gov.au/about-us/boards-and-committees/Coast_Protection_Board/policies-strategic-plans">http://www.environment.sa.gov.au/about-us/boards-and-committees/Coast_Protection_Board/policies-strategic-plans</a> )
Tasmania	0.2	0.8	Levels relative to 2010 sea levels. <a href="http://www.dpac.tas.gov.au/divisions/climatechange/climate_change_in_tasmania/impacts_of_climate_change/">www.dpac.tas.gov.au/divisions/climatechange/climate_change_in_tasmania/impacts_of_climate_change/</a> (Currently under review, expected early 2017)
Victoria	0.2 (2040)	0.8	Victorian Coastal Strategy 2014. "... current Victorian planning benchmarks <ul style="list-style-type: none"> <li>to plan for sea level rise of not less than 0.8 m by 2100 and</li> <li>to plan for sea level rise of not less than 0.2 m by 2040 for urban infill areas".</li> </ul>
Western Australia	-	0.9	0.9m for a 100-year period (2010-2110) based on upper bound (95 <sup>th</sup> percentile) of the IPCC AR4 SRES scenario A1FI including the allowance for 'scaled-up ice sheet discharge'

## 4. ENGINEERING IMPACT ASSESSMENT

### 4.1 Scope

Coastal and ocean engineering covers a wide range of activities, often with practitioners developing further expertise in specific areas. The following guidelines have attempted to encompass this wide range, characterised by the summary in Table 3 below, which is classified according to the operating environment, i.e. offshore, nearshore, beach and shoreline, and estuary and tidal lake. It is possible that the same activity, for example a marina, may require a different response to climate change impacts depending on the environment in which it is constructed.

Table 3 - Coastal and ocean engineering activities that may be affected by climate change

Offshore (>60m)	Nearshore	Beach and Shoreline	Estuary and Tidal Lake
Anchor Systems	Aquaculture	Artificial Surfing Beaches	Aquaculture
Deepwater Mining	Coral Reef Environments	Beach Management	Boating Facilities
Ocean Outfalls	Breakwaters	Beach Mining	Bridges
Pipelines	- Fixed	Beach Nourishment	Canal Estates
Structures	- Floating	Beach Stability	Channel Stability
- Fixed	Dredging and Disposal	Boating Facilities	Causeways
- Floating	Extractive Industry	Coastal Zone Management	Development
Risers	Marinas	Development	- Commercial
Submarine Cables	Marine Parks	- Commercial	- Industrial
Subsurface Facilities	Mooring Systems	- Industrial	- Infrastructure
Tethered Systems	Navigation Aids	- Infrastructure	- Residential
Towing Systems	Navigation Channels	- Residential	- Tourist
	Offshore Disposal	- Tourist	Dredging and Disposal
	Outfalls	Groynes	Entrance Management
	Ports and Harbours	Marinas	Estuary/Lake Management
	Power Station Cooling	Reclamation	Flood Mitigation
	Reclamation	Revetments	Marinas
	Sediment Processes	Sand By-Passing	Mining
	Stormwater Disposal	Sediment Transport	Navigation
	Structures	Structures	Power Station Cooling
	- Fixed	- Fixed	Reclamation
	- Floating	- Floating	Shore Stability
	Underkeel Clearance	Vegetation Protection	Stormwater Disposal
	Wharves/Jetties	Stormwater Outlets	Structures
			- Fixed
			- Floating
			Submarine Crossings
			Tidal Barrages
			Training Works
			Vegetation Protection
			Water Quality Control
			Wetland Management

## 4.2 Methodology

The recommended methodology for assessment is to consider the relative likely importance of changes to the key environmental variables that have been the subject of climate change scenario modelling, and then to consider possible secondary effects that may flow from these primary changes.

The key environmental variables are considered to be:

- mean sea level
- ocean currents and temperature
- wind climate
- wave climate
- rainfall / runoff
- air temperature.

These key climate change variables are listed in Table 4 together with a summary statement of the respective climate change scenario for Australia, as discussed in previous sections.

The methodology then considers the potential impacts of changes in these key variables to a selection of process variables of relevance to coastal and ocean engineering. The adopted process variables are presented in Table 5. The likely interactions between the key environmental variables and the process variables are explored in Table 6 for guidance. Those interactions assessed as being particularly significant have been shaded to assist interpretation of the table.

In most instances an experienced coastal and ocean engineer will be able to quantify the climate change impact on process variables through knowledge of the physical interactions. However, in some instances, e.g. coastal recession due to sea level rise, interactions may be highly complex and established procedures may not be appropriate to the site or may provide little more than guidance. In such instances the professional engineer will need to exercise judgement in testing for sensitivity and applying safety factors to take account of uncertainty. A suggested procedure for making these necessary assessments follows below.

## 4.3 Application

Given the present uncertainties regarding the impact of climate change on factors affecting coastal and ocean engineering, the recommended approach is one of combined risk and sensitivity analysis. Figure 8 provides a flowchart summary of the following recommended procedure for engineering assessment:

### *Step 1: Specify the Design Life or Planning Horizon*

This is a decision taken in consultation between the professional engineer and the client (government, industry or private), based on advice from the engineer regarding practicality, serviceability and cost of the envisaged facility and the client requirement for level of performance, term of operation and budget. The design life of the facility, or planning horizon of the activity, should be understood and agreed by all stakeholders because it underpins the design philosophy and may fundamentally control the selection of material, methods and expertise. Potential climate change considerations may influence this decision. Change of land use (e.g. from rural to residential) may have implications under the planning process and in common law that extend significantly beyond the design life of an individual structure (or dwelling) constructed on the property.

### *Step 2: Examine the Consequences of Failure*

The impact of the possible "failure" of the facility (e.g. structure, process or management strategy) will have direct and indirect consequences, and should be assessed in terms of primary risk outcomes such as issues of cost, safety, and environment. The consequences of failure should form part of the evaluation of options being considered with preference given to "no regrets" strategies or options least affected by different possible climate change projections as described by Hallegatte (2009; Section 2.4.1).

*The design life of the facility or planning horizon of the activity ... underpins the design philosophy and may fundamentally control the selection of material, methods and expertise.*

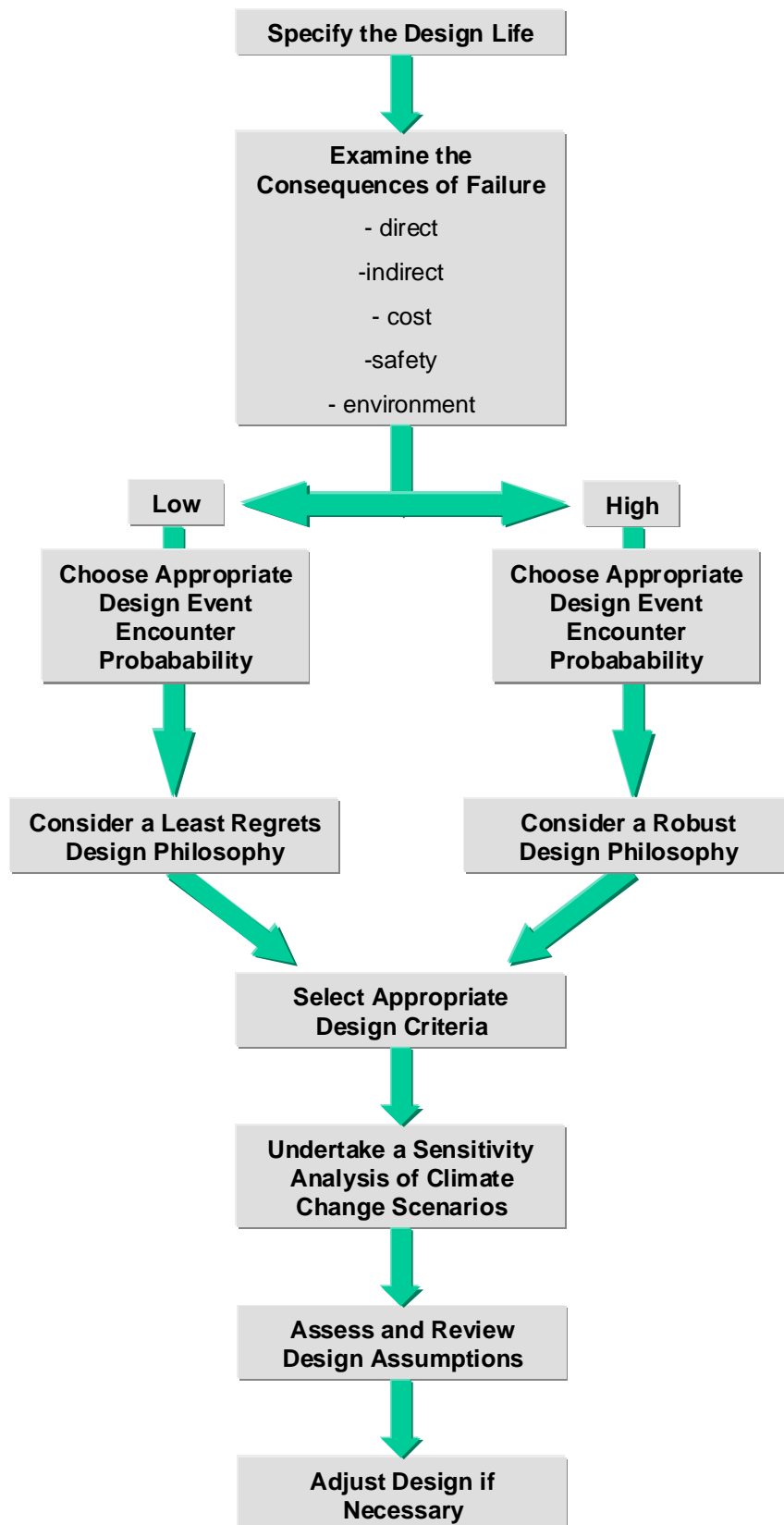


Figure 8 - Recommended engineering impact assessment procedure



Table 4 - Key environmental variables and climate change scenarios

Key Variable	Code	Australian Scenario	Comment									
Mean Sea Level	K1	Projected RCP range of sea level rise (m):	Global average sea level rise scenarios must be converted to estimated local relative sea level movement for each site. Local effects due to changing dynamic heights may also vary. Government policy and guidelines must be taken into account.									
		<table border="1"> <thead> <tr> <th></th> <th>2050</th> <th>2100</th> </tr> </thead> <tbody> <tr> <td>upper</td> <td>0.4</td> <td>1.0</td> </tr> <tr> <td>central</td> <td>0.3</td> <td>0.6</td> </tr> <tr> <td>lower</td> <td>0.2</td> <td>0.3</td> </tr> </tbody> </table>			2050	2100	upper	0.4	1.0	central	0.3	0.6
	2050	2100										
upper	0.4	1.0										
central	0.3	0.6										
lower	0.2	0.3										
		(See Figure 6)										
Ocean Currents and Temperature	K2	No quantitative or qualitative models are available for coastal regions of the continent. Important to differentiate between currents driven by major circulation e.g. East Australian or Leeuwin Current and atmospherically forced currents such as storm surge or coastally trapped waves. Tidal currents will vary in shallow waters with sea level rise. SST increase similar to air temperature increase.	Natural spatial and temporal variability still masks the underlying behaviour of the oceans and hinders climate change assessment. Global data gathering is advancing knowledge on many fronts.									
Wind Climate	K3	Largely qualitatively: <ul style="list-style-type: none"> <li>- Trade winds may be weaker</li> <li>- Westerly wind stream may move further south</li> </ul> More quantitatively: <ul style="list-style-type: none"> <li>- Maximum potential intensity of tropical cyclones may increase by 10% by 2100</li> <li>- Regions of cyclogenesis and the regions affected by tropical cyclones are not expected to change significantly</li> <li>- Fewer tropical cyclones are possible in many regions</li> </ul>	Climate models do not at this stage provide firm projections for any key meteorological features such as the timing, intensity or location of the tropical monsoon, mid-latitude systems, the subtropical anti-cyclone belt or ENSO-related effects. Localised effects remain possible.  Models cannot reliably provide advice on specific non-cyclonic extremes,									
Wave Climate	K4	Regional mean wave climate will alter if regional mean wind patterns change. Seasonal wave direction would be affected if the mean latitudinal position of major weather systems alone were changed. Other factors will be site specific and determined by the local sea level rise and bottom topography.	Not possible to formulate a general scenario for all of Australia as effects could vary regionally. Intensity changes are subject to qualifications in regard to the wind climate.									
Rainfall / Runoff	K5	Rainfall changes: <ul style="list-style-type: none"> <li>- refer CSIRO (2015)</li> <li>- Australian Rainfall and Runoff (2016); available online at <a href="http://arr.ga.gov.au/">http://arr.ga.gov.au/</a></li> </ul>	Increases are possible in the frequency and magnitude of high-intensity precipitation events.									
Air Temperature	K6	Rise in average land surface air temperature: <ul style="list-style-type: none"> <li>by 2030 (RCP4.5): <ul style="list-style-type: none"> <li>- 0.6 - 1.3 °C (less in coastal areas)</li> </ul> </li> <li>by 2070 (RCP8.5): <ul style="list-style-type: none"> <li>- 2.8 - 5.1 °C</li> </ul> </li> </ul> Rise in average near-coastal SST (RCP8.5): <ul style="list-style-type: none"> <li>by 2030: <ul style="list-style-type: none"> <li>- 0.4 - 1.0 °C</li> </ul> </li> <li>by 2090: <ul style="list-style-type: none"> <li>- 2 - 4 °C</li> </ul> </li> </ul>	Increases are likely in the frequency of occurrence of extremely high temperatures with reductions in the frequency of very low temperatures.									

Table 5 - Process variables

Process Variable	Code
Local Sea Level	S1
Local Currents	S2
Local Winds	S3
Local Waves	S4
Effects on Structures	S5
Groundwater	S6
Coastal Flooding	S7
Beach Response	S8
Foreshore Stability	S9
Sediment Transport	S10
Hydraulics of Estuaries	S11
Quality of Coastal Waters	S12
Ecology	S13

The "failure" of the facility will depend on its inability to perform its intended function. This may have several dimensions for a complex facility and does not always simply imply "structural failure beyond repair", although that might be the ultimate consequence. The "failure" needs to be linked to the possible combination of factors or events (natural or manmade) that would cause the defined failure condition(s) to occur.

*The possibility of "failure to perform intended function" must consider cost, safety and environmental issues.*

*Step 3: Select the Design Event Encounter Probability*

This quantifies the acceptable risk of "failure" of the facility for the duration of the chosen design life or planning horizon and should be based on the assessed consequences of failure, in its various dimensions. All stakeholders should agree to the adopted level of risk and understand its potential consequences. For complex facilities, differing encounter probabilities might be entirely appropriate for separate elements of the design, provided the interactions are properly assessed.

Where the consequence of failure has been assessed as relatively "low", it might be appropriate to consider a relatively higher probability of encounter with the design failure condition(s). This would only be appropriate where the risk to life, property and the environment is very low and where there is a significant overall cost advantage in this strategy (remembering that repair and replacement costs will also need to be assessed).

Where the consequence of failure has been assessed as relatively "high", it would be appropriate to consider a relatively lower probability of encounter with the design failure condition(s). This may be dictated by a primary safety concern, a significant environmental impact or an unacceptable business loss condition.

*Step 4: Follow an Appropriate Design Philosophy*

For a low consequence of failure (high encounter probability) the appropriate design philosophy might be characterised by a *least regrets* strategy. This acknowledges that "failure" of the facility will probably occur and the design process should concentrate on amelioration of the impact of failure from the most sensitive aspect(s), e.g. the ability/cost to repair or replace or the environmental impact, whether visual or actual.

*For a high consequence of failure, the appropriate design philosophy might be characterised by robustness.*

Table 6 - Relationships between key and process variables

	<b>Mean Sea Level K1</b>	<b>Ocean Currents &amp; Temperature K2</b>	<b>Wind Climate K3</b>	<b>Wave Climate K4</b>	<b>Rainfall / Runoff K5</b>	<b>Air Temperature K6</b>
<b>Local Sea Level S1</b>						
Astronomical Tide	Major direct effect especially in estuaries and tidal lakes	Minor effect	No direct effect	No effect	No effect	No effect
Barometric Tide	Minor effect	Minor density effect	Weather system track related	No effect	No effect	Indirect through air pressure
Storm Surge	Greater overland penetration; possible bathymetry effect changes	Indirect effect of prevailing currents, SST	Major direct effect	Minor effect	Flood coincidence effects via tailwater	No direct effect
Wave Setup	Altered refraction	Minor effect	Indirect effect	Major direct effect	Possible interaction via tailwater	No effect
Trapped Coastal Waves	Minor effect	Unknown effects	Dependent on changes in major wind systems	Minor effect	No effect	No effect
Tsunami	Minor effect	Minor effect	No effect	No effect	No effect	No effect
<b>Local Currents S2</b>						
Tidal Stream	Major direct effect in estuaries and tidal lakes	Minor effect	No direct effect	No effect	No effect	No effect
Wind Driven	Direct effect	Minor effect	Direct effect	Minor effect	No effect	No effect
Wave Driven	Possible major direct effect in some shallow water regions, especially reefs	Minor effect	Indirect effect	Major direct effect	No effect	No effect
Density Driven	May be affected relative to natural sills in estuaries	Baroclinic ocean currents may be affected	May be affected by surface mixing	May be affected by surface mixing	May be impacted by runoff in estuary or nearshore areas	May affect stratification in nearshore areas
Prevailing	Minor effect	Major direct effect	Major direct effect	No effect	Minor effect	No effect
Storm Surge	Major direct effect in shallow water regions	Minor effect	Major direct effect	Minor effect	No effect	No effect
<b>Local Winds S3</b>						
Prevailing	No effect	Minor effect	Major direct effect	No effect	No effect	Minor effect
Sea Breeze	Minor effect	Minor effect	Minor effect	No effect	Minor effect	Possible effect on magnitude
Storm	No effect	Minor effect	Major direct effect on frequency, magnitude	No effect	No effect	Minor effect

	<b>Mean Sea Level K1</b>	<b>Ocean Currents &amp; Temperature K2</b>	<b>Wind Climate K3</b>	<b>Wave Climate K4</b>	<b>Rainfall / Runoff K5</b>	<b>Air Temperature K6</b>
			and possibly direction			
<b>Local Waves S4</b>						
Wind Driven	Possible major effect in shallow water regions	Minor effect	Direct effect	Indirect effect	No effect	No effect
Prevailing Swell	Possible major effect in shallow water regions	Minor effect	Indirect effect	Major direct effect	No effect	No effect
Extreme	Possible major effect in shallow water regions	Minor effect	Indirect effect	Major direct effect	Possible flood interaction	No effect
<b>Effects on Structures S5</b>						
Investigation	Minor effect	Changing statistics will affect determination of design criteria	Changing statistics will affect determination of design criteria	Changing statistics will affect determination of design criteria	Changing statistics will affect determination of design criteria	No effect
Design	Major direct effect	Minor effect	Major direct effect on forcing; possible changes to marginal probability of failure	Major direct effect on forcing; possible changes to marginal probability of failure	Major effect depending on location or purpose	Minor effect
Construction	Minor effect	Minor effect	May affect downtime	May affect downtime	Minor effect	Minor effect
Operation	Major effect for older structures	Minor effect	May impact depending on function	May impact depending on function	Minor effect	Minor effect
Maintenance	Minor effect	Possible increased marine fouling rates	Older structures may need retrofitting or upgrade	Older structures may need retrofitting or upgrade	Minor effect	Possible increased corrosion rates
Removal	Minor effect	Minor effect	May affect downtime	May affect downtime	Minor effect	Minor effect
<b>Groundwater S6</b>						
Level	Major direct effect	No effect	Indirect effect	Local setup changes may occur	Direct effect	No effect
Quality	Saltwater intrusion possible	No effect	No effect	Minor effect	Minor effect	
Quantity	Reduced storage	No effect	No effect	Minor effect	Affects phreatic surface	Minor effect

	<b>Mean Sea Level K1</b>	<b>Ocean Currents &amp; Temperature K2</b>	<b>Wind Climate K3</b>	<b>Wave Climate K4</b>	<b>Rainfall / Runoff K5</b>	<b>Air Temperature K6</b>
Flow rate	Hydraulic gradients may reduce	No effect	No effect	No effect	Affects hydraulic gradient	Possible minor increase in transmissability
<b>Coastal Flooding S7</b>						
Level	Major direct effect; tailwater increases on river runoff and site drainage	No effect	Major direct effect via intensity of severe storms and cyclones	Major direct effect via wave setup at open sites	Direct effect via changes in intensity of rainfall	No effect
Frequency	Major direct effect	No effect	Major direct effect via frequency of severe events	Major direct effect via wave setup at open sites	Direct effect via changes in frequency of rainfall	No effect
Extent	Major direct effect	No effect	Major direct effect via distribution of severe events	Major direct effect via wave setup at open sites	Direct effect via changes in rainfall distribution	No effect
<b>Beach Response S8</b>						
Alignment	Effects due to changed wave refraction, diffraction and attenuation (under high SLR scenarios only)	Possible wave-current refraction interaction	Aeolian transport processes; dune stability; vegetation changes; longshore currents	Wave directional energy changes, directional storm occurrence statistics	Estuary discharges; storm-water drains; seasonal changes in sediment supply; vegetation; dune stability	Vegetation changes; sea breeze effects
Recession or Progradation	Recession with sea level rise	Possible wave-current refraction interaction; changes in long term sediment supply	Net change to sediment budget possible	Wave directional energy changes	Estuary discharges; storm-water drains; seasonal changes in sediment supply; vegetation; dune stability	Vegetation changes; sea breeze effects
Fluctuations	Effects due to changed wave refraction, diffraction and attenuation; wave setup and runup	Possible wave-current refraction interaction	Changed timescales for beach recovery	Wave directional energy changes; changed timescales for beach recovery	Estuary discharges; storm-water drains; seasonal changes in sediment supply; vegetation; dune stability	Vegetation changes; sea breeze effects

	<b>Mean Sea Level K1</b>	<b>Ocean Currents &amp; Temperature K2</b>	<b>Wind Climate K3</b>	<b>Wave Climate K4</b>	<b>Rainfall / Runoff K5</b>	<b>Air Temperature K6</b>
<b>Foreshore Stability S9</b>						
Reef	Wave penetration; changed coral regeneration rates	Changed coral nutrient supply	Wind generated reef currents	Changed impact energy; wave direction and setup	Changed coral growth rates	Changed coral growth rates
Entrance	Tidal prism changes; flow velocities; bar configuration; entrance channel configuration	Minor effect	Changed nearshore currents affecting sediment transport; aeolian transport	Changed littoral drift environment	Frequency of break-out; baseline flows	No effect
Dune	Groundwater level affecting stability, wave setup wave runup; increased wave exposure and beach fluctuations; possible dune overtopping	Minor effect	Changed dune shape, mobility, vegetation, alignment; dune blow-out	Changed scarp toe erosion; wave runup and overtopping; break through	Elevated phreatic levels; pore pressure changes; vegetation	Vegetation changes
Bluff (plus indurated sand)	Exposure of sediments to water based erosion	Minor effect	Changed vegetation; direct wind erosion	Changed scarp toe erosion; wave runup	Changed pore pressures; vegetation; weathering; frictional properties	Vegetation changes; weathering
Cliff	Exposure of sediments to water based erosion	Minor effect	Changed vegetation; direct wind erosion	Changed impact energy; wave runup	Surface weathering; erosion	Vegetation changes; rate of chemical weathering
<b>Sediment Transport S10</b>						
Longshore	Changed distribution of motive energy; breaker depth; wave refracted angle	Magnitude and duration of storm currents	Longshore wind generated currents	Wave directional energy changes;	May affect sources/sinks of littoral drift	Minor sea breeze effects
Onshore - Offshore	Changed distribution of motive energy; breaker depth; wave refracted angle	Minor effect	Dune recovery times	Wave directional energy changes; magnitude and duration of storms	May affect sources/sinks of littoral drift	Sea breeze effects
Aeolian	No effect	Minor effect	Major direct effect on dune mobility and direction	May affect quantity of available unconsolidated sand	Sand mobility	Sea breeze effects; vegetation

	<b>Mean Sea Level K1</b>	<b>Ocean Currents &amp; Temperature K2</b>	<b>Wind Climate K3</b>	<b>Wave Climate K4</b>	<b>Rainfall / Runoff K5</b>	<b>Air Temperature K6</b>
Deepwater	No effect	Direct effect on transport	No direct effect	Major effect on mobilisation	Minor effect	No effect
Estuaries	Mobilise tidal deltas, Scour/siltation of trained entrance	No direct effect	No direct effect	Local wind wave generation dependent on water depth	Minor impacts around drainage inlets	No effect
<b>Hydraulics of Estuaries S11</b>						
Tides	Reduced friction, increased tidal prism, increased heights and volumes	No effect	May influence tidal circulation patterns in some large shallow estuaries	May influence inlet characteristics	Changes in freshwater flows may influence tidal circulation	No effect
Wave Penetration	Increased wave penetration	Minor effect	Indirect effect	Wave directional energy changes; magnitude and duration of storms	Possible wave blocking changes	No effect
Seawater Penetration	Major effect on upstream penetration of salt-water	No effect	Indirect effect	No effect	Variable depending on freshwater flow events	No effect
Mixing	Increased exchange	No effect	Changed mixing characteristics	Changed mixing characteristics	Variable depending on freshwater flow events	No effect
<b>Quality of Coastal Waters S12</b>						
Offshore	No effect	No effect	Minor effect	Changed mixing and turbidity	Minor effect	No effect
Nearshore	No effect	Minor effect	Changed mixing and turbidity	Changed mixing and turbidity	Changes in entrance turbidity	No effect
Estuarine	Altered depths, greater exchange; sea-water penetration	Minor effect	Changed mixing and turbidity	Changed mixing and turbidity	Changes in salinity, stratification, turbidity	Minor effect on stratification and biological growth
<b>Ecology S13</b>	<i>Provided as a general guide only - seek specialist biological advice as necessary</i>					
Nekton and Plankton	No effect	Major effect on distribution	Changed mixing depths	Changed mixing depths	Localised salinity changes nearshore	No effect
Corals	Growth rates may not match sea level rise	Changed nutrient supply	Minor effect	Wave directional energy; magnitude and duration of storms	Localised salinity changes nearshore	Increased bleaching

	<b>Mean Sea Level K1</b>	<b>Ocean Currents &amp; Temperature K2</b>	<b>Wind Climate K3</b>	<b>Wave Climate K4</b>	<b>Rainfall / Runoff K5</b>	<b>Air Temperature K6</b>
Seagrasses	Shifting zonation's; light penetration	Changed nutrient supply	Mixing and turbidity may affect light penetration	Wave directional energy; magnitude and duration of storms will favour rugged species	Localised salinity changes nearshore	Minor effect
Benthic	Shifting zonation's; light penetration	Changed nutrient supply	Mixing and turbidity may affect light penetration	Wave directional energy; magnitude and duration of storms will favour rugged species	Localised salinity changes nearshore	No effect
Wetland	Species depth dependency effects	Changed nutrient supply	Minor effect	Minor effect	Changes in salinity profile may have major effect	Evapotranspiration rates
Terrestrial	Waterlogged root systems; raised salinity; erosion/inundation of shorelines	No effect	Minor effect	Minor effect	Growth rates especially via ground-water	Evapotranspiration rates
Avifauna	Nesting areas may be affected	Changed food sources	Minor effect	Minor effect	Minor effect	Minor effect

For a high consequence of failure (low encounter probability) the appropriate design philosophy might be characterised by *robustness*. This aims to prevent "failure" of the facility by acknowledging the need for either a comfortable excess of design capacity (strength, displacement, resistance as appropriate) or the ability to subsequently adapt the design to suit changing climate change scenarios throughout its lifetime (enhancement, retrofitting, raising as appropriate).

#### *Step 5: Select Appropriate Design Criteria*

At this point it is necessary to identify the specific variables that may be affected by climate change. These will be evident from examination of the likely interactions between the key and process variables in Table 5, as a function of the intended role and operation of the specific facility.

The design may then be prepared based on knowledge of existing climate conditions derived from the statistical analysis of measurements, hindcasting or simulation techniques as appropriate. Where insufficient knowledge exists relative to the assessed consequences of failure then additional studies should be undertaken to gain such knowledge. These additional studies should consider including the possible impact of existing climate trends, where appropriate.

The statistical description of the "failure" event will then normally involve an estimate of the likelihood of equalling or exceeding a given magnitude of that event. This is typically expressed as a function of the elapsed time of exposure to, or sampling of, the event process and requires selection of a design average recurrence interval (ARI or *Return Period*) and its associated threshold magnitude. Some designs may require further consideration of joint probability elements such as water level and wave height. Conveniently, the above considerations can be combined through the concept of the "encounter probability" *R*, which greatly assists the decision making process (Borgman 1963).



The principal risk components of ...

Threat:	Average Recurrence Interval (ARI) or Return Period	$T$	(y)
Exposure:	Planning Horizon or Design Lifetime	$N$	(y)
Acceptability:	Risk of Encounter within that Lifetime	$R$	(%)

can be related by:

$$T = \frac{-N}{\ln[1-R/100]} \quad (1)$$

This equation provides the appropriate average recurrence interval of the threat ( $T$ ) to be considered in the design if, within the design life of  $N$  years, the *acceptable* risk of encounter (or possible failure at that level of threat) is chosen to be  $R$ . It is readily apparent from the summary of values presented below in Table 6, and shown graphically in Figure 9, that relatively high values of the average recurrence interval  $T$  will be required to limit the potential for failure of typical projects below a level of 10% over their lifetime. For example, if a structure is to have a 5% risk of encountering an event magnitude that is equalled or exceeded at least once during the next 50 years, then the design extreme event is one with a 975-year (say 1000-year) average recurrence interval. In fact, there is approximately a 64% chance of equalling *or exceeding* the 50-year recurrence interval magnitude in any consecutive period of 50 years. Expressed in another way, in the next 50 years there is a 5% chance that the 1000-year average recurrence level event *or greater* will occur, but a 64% chance that the 50-year event *or greater* will occur. More sophisticated analyses may also be undertaken to examine the probability of more than one instance of the design event occurring within the design life or even a specific number occurring. The methods of Bea (1990), for example, also provide a useful analytical framework for structural reliability analysis.

*... in the next 50 years there is a 5% chance that the 1000-year average recurrence level event or greater will occur ...*

Table 7 - Design average recurrence interval T

% Risk of Encounter ( $R$ )	Design Life or Planning Horizon in Years ( $N$ )					
	1	10	20	50	100	500
99	0.2	2.2	4.3	11	22	109
90	0.4	4.3	8.7	22	43	217
64	1.0	10	20	49	98	489
50	1.4	14	29	72	144	721
20	4.5	45	90	224	448	2241
10	9.5	95	190	475	949	4746
5	19	195	390	975	1950	9748
1	99	995	1990	4975	9950	49750

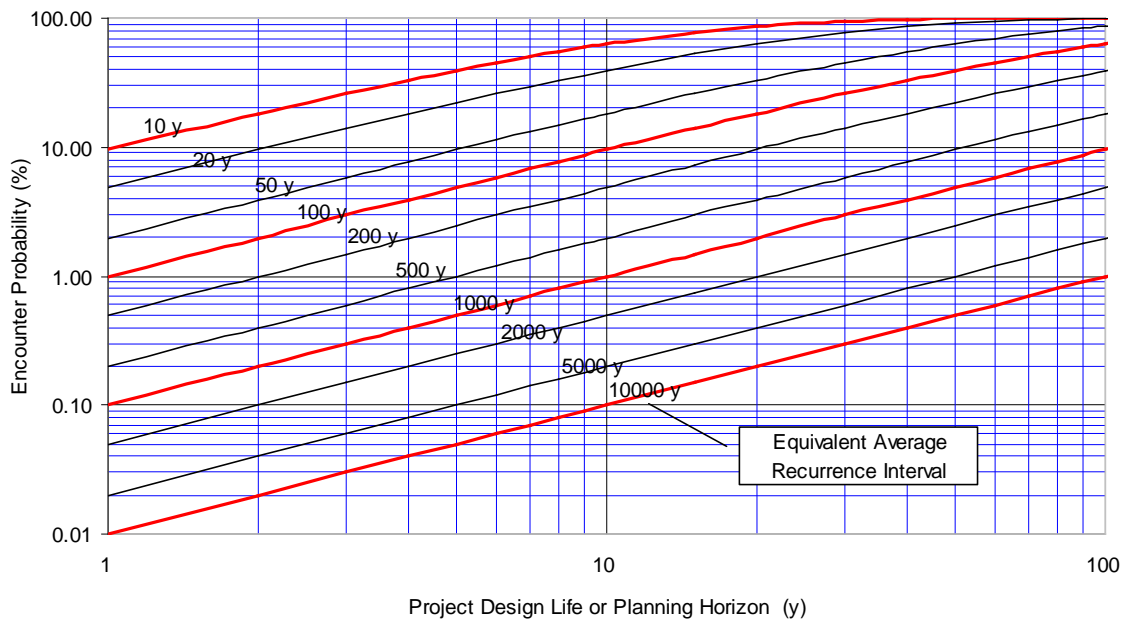


Figure 9 - Relationship between encounter probability, design life and average recurrence interval

While this method and its assumption of statistical stationarity has significant utility in allowing a rational consideration of risks, the changing climate condition will act to partly invalidate these assumptions over time, especially when the rate of change of key variables increases. Accordingly, sensitivity testing is recommended as described below.

#### *Step 6: Undertake a Sensitivity Analysis*

Establishment of a *design interaction matrix* should facilitate this process, based on the current best estimates of climate change scenarios presently available or where no estimates are available, on an appropriate test assumption. In practical terms this might involve adjusting the modal value of a statistical distribution within certain bounds (simulating a bias or magnitude shift) or alternatively a change to the "slope" of the distribution (simulating a change in frequency of occurrence) or a combination of both effects. The degree of assumed change should reasonably relate to the published levels of possible climate change and consider "mean" and "upper" predictions. In many situations, rather than assuming a direct effect, it might be necessary to consider the "filtering" effects of a number of related processes, as for example embodied in Table 5. The statistical recombination of assumptions is preferred where possible to avoid unnecessary subjectivity at this stage of the assessment.

Appendix C provides a simple interaction matrix template that may assist in the preliminary assessment of climate change sensitivities to a particular design.

#### *Step 7: Assess and Review Design Assumptions*

Examine the outcome of the sensitivity analysis with respect to the implied consequences and assess the suitability of the final design.

#### *Step 8: Adjust the Design if Necessary*

Repeat assessment Steps 1 through 7 as appropriate to reassess design life, encounter probability or to increase robustness or adaptability to minimise future risk.

## 4.4 Example Assessments

The following detailed example impact assessments are provided for illustration of the method. The first case is of a complex offshore structure (fixed or floating), so as to illustrate the major aspects of the assessment methodology for a specific "engineered" facility. A second detailed example is provided in the next section for a nearshore tourism development where there is a greater reliance on "planned" facilities. Finally, an example of a Greenfield coastal community is given.

#### 4.4.1 Detailed Example 1: Fixed or Floating Offshore Structures

##### *Design Life:*

The typical application for such structures would be for oil or gas extraction and processing, although some may support transport or tourist facilities.

For oil and gas situations, the design life is likely to vary primarily as a function of the expected production life of the reservoir (5 to 20 years). Typically, however, advances in product recovery technology (directional drilling etc.) and subsequent field exploration have caused the original design lives of many offshore facilities to be exceeded. Often costly retrofits have then become necessary to accommodate the additional weight of expanded processing facilities or stiffening to extend the fatigue and corrosion resistance of the major structural elements. Small reservoir situations with unmanned or subsea facilities may justify a design life of 10 years or less, depending on project economics. Larger developments would typically extend to 20 years and, where further project expansion is likely, up to 40 years or more.

##### *Consequences of Failure:*

For the majority of offshore situations, the consequences of failure both direct and indirect will be *very high*. Direct effects would involve possible loss of life, loss of production and income, reinstatement costs and contractual defaults and penalties. Indirect effects could be potential environmental damage (e.g. oil spill), compensation costs for clean-up, claims made for interruption in product supply and loss of employment or damage to regional economies.

##### *Design Encounter Probability:*

The discussion here is limited to considerations of environmental structural loading. Other design elements, such as risk of human error, mechanical breakdown, fire or explosion will significantly influence the overall design process for oil and gas processing facilities. The process, structural, geotechnical and ocean engineers should adopt consistent design encounter assumptions.

Where loss of life as a result of failure or major environmental impact is expected, a design event encounter probability range as low as 0.5% to 1% might be appropriate. This would require designing some crucial structural elements for environmental loadings with an average recurrence interval of between 2,000 and 10,000 years, depending on the chosen design life. Different encounter probabilities might be appropriate for other aspects of the design, e.g. loss of production might be tolerated at the 5% level or greater, depending on the cost and time to repair, contractual or labour issues etc.

##### *Design Philosophy:*

A robust design philosophy should be considered for offshore facilities. The design concepts of ultimate strength and reserve strength ratio would generally apply, as presented for example in Bea (1990).

##### *Selection of Appropriate Design Criteria:*

The necessary magnitude of the relevant criteria follows from the specification of design life and encounter probability, e.g. a 1% encounter in a 20-year life requires a 2,000-year average recurrence level magnitude. Where a single forcing element dictates the design, for example wind forcing, the design requirements might be satisfied by simply adopting the relevant (gust or mean) wind speed magnitude and direction (key variable K3) indicated by either data or, more likely, hindcast or simulated statistical analyses. However, for the normal offshore condition, extreme loadings do not occur in isolation but rather within complex storm events. The joint probability of environmental loading combinations will therefore often be an important consideration. In this case, the relative magnitude, phasing, dynamics and spatial variation over the structure of a number of environmental loadings (currents S2, winds S3, waves S4) becomes dominant. The structural response is then the sum total of these separate forcing functions combined often with dynamically variable resistance characteristics of the seabed (anchor attachment, pore pressures, pile skin friction etc.). The resulting statistical loading function(s) should then become the basis for the design rather than the separate independent incident (wind, wave or current) conditions.

##### *Sensitivity Analysis of Climate Change Scenarios:*

At this point an interaction matrix should be constructed to isolate those design elements most likely to be affected by climate change. A template is provided in Appendix C, which has been reduced here as Table 8 to include only those combinations relevant to the offshore example, using Table 6 for guidance.

#### *Assess and Review Design Assumptions:*

From Table 7, the principal impacts are seen to be local sea level, possible increased storminess with changes to local wind and wave climates (e.g. Southern Ocean, east coast low, monsoon, tropical cyclone) and perhaps some less critical operational matters.

Of these, sea level changes of the magnitudes presently predicted can and should be readily allowed for in a new design and at a relatively small overall cost. For existing structures, increased sea level will most noticeably cause inconvenience at tidal landings but this can be easily remedied. More importantly, a rising sea level decreases the underdeck wave clearance of fixed structures and may thereby significantly impact the encounter probability of failure. Retrofitting to increase structural strength or raise deck levels may then be a necessary option to maintain the original design risk of failure.

Increased storminess is potentially much more complex than sea level changes and the design allowance may need to be varied depending on the situation. For example, a location presently near the edge of tropical cyclone influence may experience a significant change in risk if the extent of cyclone influence increases. For a location already in a tropical cyclone region, the relative impact may be minor. These interpretations should be referred to specialist coastal and ocean engineers with appropriate numerical and statistical modelling capability to provide recommended design allowances.

#### **4.4.2 Detailed Example 2: Nearshore Tourism Development**

##### *Design Life:*

A typical design life of between 20 and 50 years might be adopted. This could depend upon the scale of the development, style of architecture, construction materials and overall economic plan. Given the harsh marine environment, maintenance costs might dictate a replacement cycle for some non-structural marine facilities and fittings of generally not more than 15 years, but this should not reduce the design capacity within the overall project design life.

##### *Consequences of Failure:*

This may have several dimensions. The first might relate to low probability storm-related damage to breakwaters, marinas, beaches, nearshore accommodation and infrastructure. This could result in possible loss of life, generally short term environmental damage and loss of income. The second dimension could relate to ongoing or operational matters such as beach and small craft amenity, wind and wave exposure, nearshore waters and groundwater quality, loss of desirable vegetation cover, potable water and the like. The major consequences of "failure" will likely be economic loss but environmental degradation could also occur and in some circumstances (e.g. storm surge) significant loss of life is possible without adequate warning or evacuation options.

##### *Design Encounter Probability:*

If loss of life is possible, for example such as an isolated low lying island or causeway situations, then relatively low design encounter probabilities are again advisable (akin to the preceding offshore design example). Where access to higher ground and shelter is readily available and warnings of severe conditions are likely, a higher encounter risk might be acceptable. Parts of the facility might be designed for differing levels of risk whereby high capital cost or protecting infrastructure such as breakwaters, causeways, hotels, central offices (administration, catering, commercial) are exposed to relatively low levels of risk over the life of the project. Bungalow-style accommodation units from which patrons would be evacuated and where damage could be readily repaired might accept a moderate risk level. Non-hazardous stormwater overflow, roadways, sacrificial boardwalks, landings and other minor structures could accept an even higher risk, where the consequences are minimal and the reinstatement costs are low. The adopted encounter probability levels may also be subject to legislative control in some areas and practitioners are expected to acquaint themselves with relevant regulations. The coastal and ocean engineer should liaise closely with the architect, builder, civil, structural, mechanical and electrical design engineers to ensure that consistent risk philosophies are being adopted across the project development.

##### *Design Philosophy:*

For those aspects of the development essential to its ongoing operational viability and environmental health and safety, a robust design philosophy should be considered. This might affect the management of the beach amenity whereby adequate setback distances need to be specified to maintain a natural active beach buffer

zone, restricted dune access and vegetation control. It might lead to the need for special design studies to optimise circulation within marinas, modelling of breakwater stability, checking groundwater characteristics etc.

For ancillary elements of the development a *least regrets* philosophy might be considered. This might apply to boat landings, boardwalks, stormwater outlets, navigation markers, dredged depths, bar stability etc. The expectation would be that any "failure" of these items would be unlikely to cause secondary damage.

Table 8 - Example interaction matrix for an offshore structure

<b>Offshore Structure</b>  <b>Example Assessment</b>	<b>Mean Sea Level</b>  <b>K1</b>	<b>Ocean Currents &amp; Temperature</b>  <b>K2</b>	<b>Wind Climate</b>  <b>K3</b>	<b>Wave Climate</b>  <b>K4</b>	<b>Rainfall / Runoff</b>  <b>K5</b>	<b>Air Temperature</b>  <b>K6</b>
<b>Local Sea Level S1</b>	-design for increases over lifetime in regard to tide and wave clearance -potential for minor changes in barometric surge heights	- some minor changes to seasonal mean levels possible due to density changes	- some minor changes to seasonal mean levels possible	- no effect	- no effect	- minor effect
<b>Local Currents S2</b>	- no effect	- likely seasonal changes which might affect operations - baroclinic currents may change	- possible major effect through increased storminess	- minor effect	- no effect	- no effect
<b>Local Winds S3</b>	- no effect	- minor effect	- possible major effect through increased storminess	- no effect	- no effect	- minor effect
<b>Local Waves S4</b>	- minor effect	- minor effect	- indirect effect	- possible major effect through increased storminess - possible changes in swell direction	- no effect	- no effect
<b>Effects on Structures S5</b>	- allowance must be incorporated	- minor effect	- potentially major effect on loadings	- potentially major effect on loadings, fatigue	- no effect	- minor operational or process changes
<b>Sediment Transport S10</b>	- no effect	- minor effect	- no effect	- possible increased scour around foundations, pipelines	- no effect	- no effect
<b>Quality of Coastal Waters S12</b>	- no effect	- possible changes in oil spill destinations and travel times	- possible changes in oil spill destinations and travel times	- minor mixing effects	- no effect	- minor effect
<b>Ecology S13</b>	- no effect	- minor effect	- minor effect	- minor effect	- no effect	- no effect

#### *Selection of Appropriate Design Criteria:*

The necessary magnitude of the relevant criteria follows from the specification of design life and encounter probability, e.g. a 5% encounter in a 50-year life requires a 1000-year average recurrence level magnitude design event. As in the example of the offshore structure, joint probability considerations will be important

for the consideration of the occurrence of tropical cyclone storm surge, tide and wave setup on overland flooding, beach and breakwater stability. It can normally be assumed that wind and wave conditions will be closely correlated, i.e. those encountered conditions will have essentially the same average recurrence intervals. Specialist advice may be necessary on such matters if the development is found to be sensitive to the assumptions made during design.

#### *Sensitivity Analysis of Climate Change Scenarios:*

The interaction matrix in Table 9, highlights the likely major areas that should be examined for their sensitivity to the adopted design.

#### *Assess and Review Design Assumptions:*

The interaction matrix highlights sea level increases (K1), wind (K3) and wave (K4) climate changes as being the major concerns. These have impacts across a wide range of the process variables and the design philosophy would need to ensure that potential changes would have minimal effect on the development. This might require conservatism in critical design components such as breakwater design, harbour entrance, major buildings and setbacks etc.

### **4.4.3 Detailed Example 3: Greenfield Coastal Community**

#### *Design Life:*

The design life of an entire community, comprising housing, commercial, industrial and infrastructure services may well be regarded as between 50 and 100 years. While commercial replacement might occur as frequently as 10 to 20 years, domestic housing of high quality may survive several generations before replacement, and be renovated periodically. Infrastructure is normally expected to function for at least 50 years and be gradually augmented, unless directly exposed to a harsh marine environment. In that case maintenance costs might dictate a replacement cycle for non-structural marine facilities and fittings of generally not more than 15 years.

The key element is the permitted change in land use. Current planning frameworks make downgrading of land use extremely difficult. A decision to change land use (e.g. from rural to residential) has no design horizon and that use (or its expectation) then continues in perpetuity. One further aspect of such a community that complicates adaptation responses is that the land comprising the development is likely to be in the ownership of hundreds or even thousands of individuals. Coordinating replacement of housing and infrastructure in a strategic manner is likely to be very difficult in these circumstances with few, if any, demonstrated cases, leading to ad hoc, piecemeal responses to the range of hazards likely to have an impact on the community. Thus it might lead to longer term benefits if a higher priority is given to prevention of exposure to the hazards as the primary response, over expectations of future adaptation in such situations.

#### *Consequences of Failure:*

If there is direct marine exposure to some elements of the development then Example 2 effects will apply to those areas, such as low probability storm-related damage to breakwaters, marinas, beaches, nearshore facilities and exposed infrastructure. This could result in possible loss of life, generally short term environmental damage and loss of income. Further direct exposure might be through tidal creeks, drains and wetlands providing pathways for permanent inundation or increased frequency of flooding, either from the sea or as a result of increasing tailwater levels during terrestrial/fluvial flood events.

For all non-direct exposure, the intention should be to limit development so as to avoid hazard exposure or limit failure within the design life. For this purpose, planning zones with differing design lives might be appropriate, anticipating adoption of a “planned retreat” predicated on identified hazard triggers, such as erosion incursion or a predetermined hazard level (say 50-y ARI etc). Subject to legal frameworks and agreements, affected lands could be either converted to open space or re-developed under additional conditions. It is noted that no examples of effective planned retreat of any significant urban areas exist throughout Australia and relevant international examples involve only restoration of marshlands from rural areas such as in the United Kingdom. It is not possible in these guidelines to assess the practical risks and community costs associated with retreat or abandonment of large numbers of titles under individual ownership.

Table 9 - Example interaction matrix for a nearshore tourism development

<b>Nearshore Tourism Development Example Assessment</b>	<b>Mean Sea Level K1</b>	<b>Ocean Currents &amp; Temperature K2</b>	<b>Wind Climate K3</b>	<b>Wave Climate K4</b>	<b>Rainfall / Runoff K5</b>	<b>Air Temperature K6</b>
<b>Local Sea Level S1</b>	- major effect in estuaries and tidal lakes - greater risk of storm surge inundation	- possible minor changes in seasonal variability of water level	- possible minor changes in seasonal variability of water level	- wave setup could increase	- possible flood interaction	- minor effect
<b>Local Currents S2</b>	- major direct effect in estuaries and tidal lakes	- possible changes to prevailing currents	- major direct effect	- possible major effect for barred entrances	- possible flood interaction	- no effect
<b>Local Winds S3</b>	- no effect	- minor effect	- major direct effect	- no effect	- no effect	- minor sea breeze effects
<b>Local Waves S4</b>	- major effect in shallow water regions	- minor effect	- indirect effect	- major direct effect	- minor effect	- no effect
<b>Effects on Structures S5</b>	- major direct effect	- minor effect	- major direct effect	- major direct effect	- major effect depending on location or purpose	- no effect
<b>Groundwater S6</b>	- major direct effect on quality and storage	- no effect	- no effect	- local setup may cause dynamic effects	- may affect phreatic surface	- minor effect
<b>Coastal Flooding S7</b>	- major direct effect on exposure, drainage, runoff	- no effect	- major direct effect via intensity and frequency of severe storms and cyclones	- major direct effect via wave setup at open sites	- direct effect via changes in rainfall distribution, intensity and frequency	- no effect
<b>Beach Response S8</b>	- major effect of recession with sea level rise - realignment	- minor effect	- possible changes to aeolian transport processes	- major effects of wave directional energy changes	- possible effects of estuary discharges	- possible vegetation changes; sea breeze effects
<b>Foreshore Stability S9</b>	- major changes to wave penetration possible - groundwater levels - sediments exposed to erosion	- minor effect	- dune shape and vegetation	- major direct effects on scarp toe erosion - runup and overtopping - breakthrough	- elevated phreatic levels; pore pressure changes; vegetation	- vegetation changes; weathering
<b>Sediment Transport S10</b>	- changed distribution of motive energy;	- may affect sediment supply	- longshore wind generated currents	- wave directional energy changes; mag-	- may affect sources/sin	- sea breeze effects; vegetation

<b>Nearshore Tourism Development Example Assessment</b>	<b>Mean Sea Level K1</b>	<b>Ocean Currents &amp; Temperature K2</b>	<b>Wind Climate K3</b>	<b>Wave Climate K4</b>	<b>Rainfall / Runoff K5</b>	<b>Air Temperature K6</b>
	breaker depth; wave refracted angle		- effect on dune mobility and direction	intensity and duration of storms	effects of littoral drift	
<b>Hydraulics of Estuaries S11</b>	- major impact on tidal prism, sea-water intrusion	- minor effect	- influence on circulation in shallow waters	- effect on inlet characteristics, mixing	- major changes could influence tidal circulation, density	- no effect
<b>Quality of Coastal Waters S12</b>	- major effect on exchange rates in estuaries	- minor effect	- possible changes in mixing and turbidity	- possible changes in mixing and turbidity	- possible changes in salinity, stratification, turbidity	- minor effect
<b>Ecology S13</b>	- major changes in zonation	- possible nutrient changes	- possible changes in mixing and turbidity	- major changes in zonation	- localised salinity changes	- possible effects coral reefs and foreshore vegetation

#### *Design Encounter Probability:*

Where loss of life is possible, for example such as isolated low lying land or causeway situations, then relatively low design encounter probabilities are advisable. Where access (evacuation routes) to higher ground and shelter is readily available and warnings of severe conditions are likely, a higher encounter risk might be acceptable. Parts of the community might be designed for differing levels of risk whereby high capital cost or protecting infrastructure such as breakwaters, groynes, seawalls, causeways, bridges are exposed to relatively low levels of risk over the life of the community.

Commercial and industrial developments can often be preferentially located in predominantly flat areas with a higher risk (but still acceptable) of flooding, whereby car parks and undercrofts can be used as floodways or flood storage, but floor levels are suspended to meet a low operational risk level.

Public space should be utilised and set aside for temporary flood conveyance at moderate levels of risk. Non-hazardous stormwater overflow, roadways, sacrificial boardwalks, landings and other minor structures could also accept a moderate risk where the consequences are minimal and the reinstatement costs are low.

Public housing and public buildings should never be sited where exposed to ocean impacts, whether via direct surge, tide, setup and runup events or erosion encroachment. Low velocity flooding could be tolerated with moderate risk if floor levels are suspended to meet a very low level of risk.

Emergency infrastructure (police, ambulance, hospital, fire and rescue, control and command, communication hubs, shelters, aged care facilities, schools etc.) must be located in areas with very low risk of impact and with appropriate storm-accessible transport corridors.

The adopted encounter probability levels and relevant climate change parameters to be used may also be subject to legislative control in some areas and practitioners are expected to acquaint themselves with relevant regulations. The coastal and ocean engineer should liaise closely with the architect, builder, civil, structural, mechanical and electrical design engineers to ensure that consistent risk philosophies are being adopted across the project development.

#### *Design Philosophy:*

For those aspects of the community essential to its economic viability and environmental health and safety, a robust design philosophy should be considered, supported by detailed investigation and design (breakwaters, bridges, floodways, groundwater). Sea level rise issues should be addressed through planning to maintain a natural active beach buffer zone over the design life, suitably elevated building sites and/or ensure adequate freeboard for low velocity flooding events. Alienation of some coastal lands may be an option in



specific situations for environmental and/or hazard considerations. Fortification of residential or commercial premises as a long term planning strategy should be avoided.

Underground car parks that are at a finite risk of flooding should be subject to closure and inspection procedures and include safe emergency egress.

For ancillary elements of the community a *least regrets* philosophy might be considered. This might apply to minor recreational or sporting structures, boat landings, boardwalks, stormwater outlets, *etc.* The expectation would be that any "failure" of these items would be unlikely to cause secondary damage or dangers.

#### *Selection of Appropriate Design Criteria:*

The necessary magnitude of the relevant criteria follows from the specification of design life and encounter probability, e.g. a 5% encounter in a 50-year life requires a 1000-year average recurrence level magnitude design event. As with the other examples, joint probability considerations may be important for the consideration of the occurrence of storm surge, tide and wave setup on overland flooding, beach and breakwater stability.

It can normally be assumed that wind and wave conditions will be closely correlated, i.e. those encountered conditions will have essentially the same average recurrence intervals. Riverine flooding in situations of short stream concentration times may also require allowance for raised surge-affected tailwater levels. Specialist advice may be necessary on such matters if the development is found to be sensitive to the assumptions made during design.

#### *Sensitivity Analysis of Climate Change Scenarios:*

The interaction matrix in Table 9 is deemed equally applicable to this example and highlights the likely major areas that should be examined for their sensitivity to the adopted design.

#### *Assess and Review Design Assumptions:*

The interaction matrix highlights sea level increases (K1), wind (K3) and wave (K4) climate changes as being the major concerns. These have impacts across a wide range of the secondary variables and the design philosophy would need to ensure that potential changes would have minimal effect on the community. For Greenfield sites, sensitivity analyses concentrating on upper-bound estimates for climate change should be carefully considered.

## 4.5 Summary

The interaction matrix method is recommended here as an objective approach for considering the possible impacts of climate change in coastal and ocean engineering practice. Ideally, such an assessment should be a group process involving not just the relevant technical personnel but a broad group of interests and stakeholders. In 1991, this technique was developed from a series of workshops hosted by the NCCOE that involved a collective assessment from more than 20 practising coastal and ocean engineers, who worked through a range of typical projects (refer Appendix A). Practitioners are therefore urged to incorporate peer review into their quality assurance procedures wherever possible to ensure a critical and objective consideration of the possible impacts of climate change.

## 5. RESEARCH AND MONITORING NEEDS

### 5.1 The Scientific Basis

The following is presented as a commentary on the present status of research and monitoring needs for increasing the understanding of potential climate change and its impacts on the coastal and ocean environment.

An extensive research effort is directed towards projecting the degree and timing of possible climate change. This primarily centres on the complex numerical modelling of the climate on a global scale, where the Earth itself becomes the control volume. This facilitates the use of aggregated data from a number of sites around the world, an averaging of trends to provide a reference point and then the calibration of models against the observed historical changes. Numerical model physics continues to be developed, with the representation of ocean-atmosphere and carbon-cycle coupling becoming more sophisticated. Modelling at smaller scales is considered to be less reliable because it stretches the validity of the numerical model assumptions, forces consideration of finer sub-resolution scale interactions and suffers from a lack of data at the regional scale.

All of the above research is directed towards more reliable predictions of the state of future climate. It takes place within essentially a competitive academic framework and is funded primarily by Government. Continuing work that focuses on demonstrating improved modelling accuracy with clear regional application is to be encouraged and supported.

*Continuing work that focuses on demonstrating improved modelling accuracy with clear regional application is to be encouraged and supported.*

### 5.2 Impacts, Adaptation and Vulnerability to Climate Change

Quantifying the subsequent impacts of possible climate change and the environmental adaptations that might occur are much more complex than determining the overall state of climate from a global control volume perspective. This is primarily related to the already limited state of knowledge of the many complex interacting temporal and spatial scales of oceanic, terrestrial and atmospheric processes. Each of these elements is already subject to extensive but specific numerical modelling efforts in the quest to understand present system behaviour. To argue that such models of present system behaviour would perform with the same skill level when addressing climate change remains a moot point. While climate change research in these areas is still essential, a focus on understanding observed processes is imperative in the short term, avoiding the temptation of making premature or weakly founded predictions that may simply serve to add to the confusion of knowledge.

The possible biological impacts and adaptations to the changing physical environment remain an essential consideration. While many studies exist that are scenario driven, more baseline experimentation and study appears highly desirable.

Societal adaptation and mitigation strategies ultimately will need to operate at the regional and local scale. It is therefore much more difficult to treat this aspect of the problem in an objective scientific or mathematical way. While some of the more obvious climate impacts and possible solutions have already been extensively canvassed, it is likely that more subtle changes may ultimately cause the most severe impacts in certain regions. The relative importance of potential sea level rise versus changing wave energy flux is a case in point. These aspects can be addressed by an intelligent planning regimen but need to be supported by scientifically based hazard assessments to provide the parameters and limits for planning. Much exists in the literature on the planning process and a further decade of discussion will likely add little to this knowledge. *Action* is needed to establish the legislative frameworks and to provide the essential scientific parameters for the planning authorities such as safe setbacks, sea level limits, banded zones, infrastructure replacement and aquifer management plans etc. Effective legislative action requires strong *political will*, while the identification of the threats and treatment options requires the harnessing of appropriate engineering and related scientific expertise and provision of research and investigation *funding*.

### 5.3 Coastal and Ocean Engineering Issues

Engineering, whether by investigation or actual works, is a major vehicle for physical intervention in the coastal/ocean zone. Coastal and ocean engineering investigation and research are most vital, yet to-date, are essentially a non-funded component of the response to climate change in Australia. The engineering perspective is clearly essential for addressing the feasibility of adopting specific mitigation options and the subsequent selection of practical planning parameters. Engineering assessment requires upstream inputs from the atmospheric and oceanographic sciences but then applies that knowledge to the risk assessment of those climate impacts on the natural (to keep it that way) and the built (to maintain it) coastal and ocean environment.

Climate change is but one of many pertinent issues that have been previously identified by the NCCOE (NCCOE 1991, 1993, 1995, 2004a,b) as requiring a concerted engineering research effort and which need to be underpinned by long-term strategic data collection programs.

The numerical prediction of potential coastal and ocean zone impacts will remain unverified and of limited practical application without significant (i.e. 50 or more years) accumulated high resolution regional data on:

- sea level variation
- shoreline changes
- estuary dynamics
- aquifer responses
- nearshore and offshore wind, wave and current characteristics
- sediment transport mechanisms
- estuarine and coastal water quality.

The following are therefore seen as the more significant issues affecting progress on climate change impacts of relevance to coastal and ocean engineering issues:

#### *A lack of relevant coastal and ocean data sets*

While some long term wind (e.g. Bureau of Meteorology; 70 year) and wave datasets (e.g. NSW and Qld governments; 40 year) exist and are of immense value, much collected data around Australia is sparse, incomplete, random and unintegrated. Urgent action is required to establish or expand engineering-related coastal and ocean data collection programs across Australia. To achieve this, the increasing trend of reduction in funding for public engineering and infrastructure projects, and the loss of Government engineering expertise in decision making, must be reversed. Monies may need to be allocated for the acquisition of long term physical data sets that can be used for verified studies in the future.

#### *Verifiable regional climate predictions*

This requires the continuation of ongoing core research by climate specialists (atmospheric scientists, meteorologists and oceanographers) leading to model development and sensitivity testing against historical data sets. Verification of climate trends, however, will necessarily await the accumulation of relevant reliable data.

#### *Engineering-based impacts and adaptation research*

NCCOE (2004) had estimated that less than 10% of Australia's climate change research budget was directed at coastal and ocean related issues and impacts, with most of that amount allocated to sea level monitoring alone. Of this, only a very small fraction was being undertaken by *engineering* research organisations. Recent data<sup>10</sup> suggests that total Commonwealth Government expenditure on climate adaptation-related activities fell from around 7% in 2008-09 to about 1.5%

*Without significant accumulated data ... numerical prediction of potential coastal and ocean zone impacts will remain unverified and of limited practical application.*

*less than 7% of Australia's climate change research budget appears directed at coastal and ocean related issues and impacts ...*

<sup>10</sup> [http://www.aph.gov.au/About\\_Parliament/Parliamentary\\_Departments/Parliamentary\\_Library/pubs/rp/BudgetReview201314/ClimateChange](http://www.aph.gov.au/About_Parliament/Parliamentary_Departments/Parliamentary_Library/pubs/rp/BudgetReview201314/ClimateChange)

by 2013-14. An examination of Australian Research Grants<sup>11</sup> over the period 2001 to 2016 shows that only around 6.5% of the \$910M of allocated grants with “climate” as a keyword also included “coast” or “engineering”. Concerted efforts need to be made by Engineers Australia and individual engineering research organisations to gain greater access to the available pool of research funds and to influence the priorities for allocation of funds. A requirement for ARC grant applicants to include a professional engineering sponsor might be a way of ensuring that more targeted and practically relevant climate adaptation research will be undertaken.

NCCOE (1995), for example, recommended a national program be undertaken to assess the coastal impacts of climate change using a *quantitative risk management* approach that could form the basis of long term planning and management strategies. This was expected to be a major undertaking conducted over many years and taking some time to plan and develop the appropriate methodology. Much of the necessary expertise, numerical tools and actual experience for undertaking such studies already exists within the coastal and ocean engineering fraternity in Australia. These studies would ideally be multi-disciplinary, calling on additional advice from scientists (earth, ocean, climate, biological) and coastal planners and managers (environment, tourism, recreation, transport, ports) as required. With Commonwealth support NCCOE (2012c) "Climate Change adaptation guidelines in coastal management and planning" was produced in the spirit of this recommendation as a base reference document. The emergence of the Commonwealth-funded NCCARF capacity-building initiative has been an acknowledged step forward in principal.

### *Coastal Adaptation Funding*

In recent years, additional national funding for natural hazards risk assessment and adaptation at the Local Government level became available through the Commonwealth Government, often administered by and with contributions, from State governments. Some jurisdictions have undertaken significant data collection and complex risk assessment projects, but without the benefit of nationally consistent methodologies and standards. This highlights that there has been no framework put in place to ensure the effectiveness and consistency of the studies and most of these initiatives represent a very minor investment compared with what is needed to underpin the long-term planning and sustainability of coastal communities. The quantum of funding typically being allocated to or by individual coastal communities continues to be a small fraction of the median market price of a single dwelling in any of the affected areas. This limits the accuracy, comprehensiveness and detail of such studies to a level far short of what is possible with current knowledge and tools and far short of what is required for long-term sustainable development or adaptation.

## 6. GLOSSARY

ACCARNSI	Australian Climate Change Adaptation Research Network for Settlements and Infrastructure
AOGCM	Atmosphere-Ocean Global Climate Model
ARC	Australian Research Council grants
ARI	Average Recurrence Interval or Return Period
AR4	IPCC Assessment Report 4
AR5	IPCC Assessment Report 5
BoM	Bureau of Meteorology
CAWCR	Centre for Australian Weather and Climate Research (BoM/CSIRO)
CFC	Chlorofluorocarbons (refrigerant gases)
CSIRO	Commonwealth Scientific and Industrial Research Organisation
EA	Engineers Australia
ENSO	El Niño - Southern Oscillation
ESM	Earth Simulation Model
HCFC	Hydrochlorofluorocarbons (refrigerant gases)

---

<sup>11</sup> <https://rms.arc.gov.au/RMS/Report/Download/Report/d6b15b2b-3a50-4021-8e6f-6c7ef1cba553/0#>

ICZM	Integrated Coastal Zone Management
IOD	Indian Ocean Dipole
IPCC	Intergovernmental Panel on Climate Change, WMO
MPI	Maximum Potential Intensity of tropical cyclones
NCCARF	National Climate Change Adaptation Research Facility
NCCOE	National Committee on Coastal and Ocean Engineering, Engineers Australia
NTU	National Tidal Unit, Bureau of Meteorology
RCP	Representative Concentration Pathways
RF	Radiative Forcing
SAM	Southern Annular Mode
SLR	Sea Level Rise
SOI	Southern Oscillation Index
SRES	Special Report on Emission Scenarios
SST	Sea Surface Temperature
STR	Sub-tropical Ridge
UNEP	United Nations Environment Programme
UNFCCC	United Nations Framework Convention on Climate Change
UVB	Ultra-Violet B solar radiation.
WMO	World Meteorological Organization (part of the United Nations)

## 7. REFERENCES

- Abuodha P. and Woodroffe C.D., 2007: Assessing vulnerability of coasts to climate change: A review of approaches and their application to the Australian coast, In Woodroffe CD, Bruce, E, Puotinen, M and Furness RA (Eds), GIS for the Coastal Zone: A selection of Papers from CoastGIS 2006, Australian National Centre for Ocean Resources and Security, *University of Wollongong*, 458p
- AGO, 2006: Assessing and mapping Australia's coastal vulnerability to climate change: expert technical workshop. Australian Greenhouse Office, *Australian Government*, 31pp,
- Allen Consulting, 2005: Climate change risk and vulnerability: promoting an efficient adaptation response in Australia. *Australian Greenhouse Office*, Mar, 2005, 159pp.
- Alexander L., Wang X., Wan H. and Trewin B. 2011: Significant decline in storminess over southeast Australia since the late 19th century. *Australian Meteorological and Oceanographic Journal*, 61, 23-30.
- Attwater C., Carley J. and Witte E., 2008: Establishing triggers for adaptive response to climate change. Proc. IPWEA Conference on Climate Change Response, Coffs Harbour, Aug.
- Bea R.G., 1990: Reliability based design criteria for coastal and ocean structures. National Committee on Coastal and Ocean Engineering, *The Institution of Engineers Australia*, ISBN 085825-518-9, 220pp.
- BoM, 2016: Annual climate summary report 2015. Bureau of Meteorology. Available online at [http://www.bom.gov.au/climate/annual\\_sum/2015/](http://www.bom.gov.au/climate/annual_sum/2015/).
- Borgman L. 1963: Risk Criteria. *Journal of the Waterway, Port, Coastal and Ocean Division*, ASCE, Vol 89, No. WW3, Aug, 1 - 35.
- Bruun P., 1962: Sea-level rise as a cause of shore erosion. *Journal of Waterways and Harbors Division*, ASCE, 88, 117-130.
- Callaghan D., Ranasinghe R. and Short A., 2008a: Quantifying the storm erosion hazard for coastal planning, *Coastal Engineering*, Vol. 56, 90-93.
- Callaghan D., Nielsen P., Short A. and Ranasinghe R. 2008b: Statistical simulation of wave climate and extreme beach erosion, *Coastal Engineering*, Vol 55(5), 375-390.
- Callaghan, J. and Power S.B., 2011: Variability and decline in the number of severe tropical cyclones making land-fall over eastern Australia since the late nineteenth century. *Clim. Dyn.*, 37, 647-662.
- Church J.A., Hunter J.R., McInnes K. and White N.J., 2006: Sea-level rise around the Australian coastline and the changing frequency of extreme events. *Australian Meteorological Magazine*, 55: 253-260.
- Church J.A. and White N.J., 2011: Sea-Level Rise from the Late 19th to the Early 21st Century. *Surveys in Geophysics*, 32, 4-5, pp. 585-602,
- CSIRO, 2015: Climate change in Australia - information for Australia's natural resource management regions: Technical Report, CSIRO and Bureau of Meteorology, Australia, 222pp.
- DCC, 2009a: Climate change adaptation actions for local government. Prep by SMEC Australia, Commonwealth of Australia, *Department of Climate Change*, 71pp.
- DCC, 2009b: Climate change risks to Australia's coast – a first pass national assessment. Commonwealth of Australia, *Department of Climate Change*, 172pp.
- Dube S.K, Murty T.S., Feyen J.C., Cabrera R., Harper B.A., Bales J.D. and Amer S. 2010: Storm surge modeling and applications in coastal areas. In Chan J. (Ed.) *Global Perspectives on Tropical Cyclones*, *World Scientific*, April, 448pp.
- Gourlay M.R., 1997: Wave setup on coral reefs: some practical applications. Pacific Coasts and Ports '97. (13th Australasian Conference on Coastal and Ocean Engineering and 6th Australasian Port and Harbour Conference), *Centre for Advanced Engineering*, Christchurch, 959-964.

- Haigh I.D., MacPherson L.R., Mason M.S., Wijeratne E.M.S., Pattiaratchi C.B., Crompton R.P. and George S., 2013: Estimating present day extreme water level exceedance probabilities around the coastline of Australia: tropical cyclone-induced storm surges. *Climate Dynamics*, DOI 10.1007/s00382-012-1653-0.
- Haigh I.D., Wijeratne E.M.S., MacPherson L.R., Mason M.S., Pattiaratchi C.B., Crompton R.P. and George S., 2014: Estimating present day extreme water level exceedance probabilities around the coastline of Australia: tides, extra-tropical storm surges and mean sea level. *Climate Dynamics*, 42, 121-138.
- Hallegatte, S. (2009), Strategies to adapt to an uncertain climate change, *Global Environmental Change* (19), 240-247.
- Harper B.A., 1999: Storm tide threat in Queensland: history, prediction and relative risk. Dept. of Environment and Heritage. *State of Queensland*, Conservation technical report No. 10, RE208-2, Jan, ISSN 1037-4701, 23pp.
- Harper B.A., (Ed.), 2001: Queensland climate change and community vulnerability to tropical cyclones - ocean hazards assessment - Stage 1, Report prep by Systems Engineering Australia Pty Ltd in association with James Cook University Marine Modelling Unit, *Queensland Government*, March, 375pp.
- Harper B.A., 2004: Queensland climate change and community vulnerability to tropical cyclones – ocean hazards assessment: synthesis report, *Queensland Government*, Aug, 38pp.
- Harper B., 2008: Managing sea level rise and climate change, Proc. *IPWEA Conference on Climate Change Response*, Coffs Harbour, Aug.
- Harper B., Hardy T., Mason L. and Fryar R., 2009: Developments in storm tide modelling and risk assessment in the Australian region. Proc. WMO/IOC JCOMM 1st Scientific and Technical Symposium on Storm Surges, Seoul, Korea, 2-6 Oct, 2007, *Natural Hazards*, Vol 51, 1, Oct, 225-238.
- Harper B., Stroud S., McCormack M. and West S., 2008: A review of historical tropical cyclone intensity in north-western Australia and implications for climate change trend analysis. *Aust. Met. Mag.*, Vol. 57, No. 2, June, 121-141.
- Harper B., Smith M., Erhart D., Anderson G. and Sultmann S., 2013a: A coastal hazard adaptation study for Townsville: pilot study. Proc. Coasts and Ports Conf, Engineers Australia, Sydney, Sept.
- Harper B., Smith M., Mason, L., Schwartz R. and Acworth C., 2013b: Gulf of Carpentaria storm tide and inundation study. Proc. Coasts and Ports Conf, Engineers Australia, Sydney, Sept.
- Harris P.T., Heap A.D., Bryce S.M., Porter-Smith R., Ryan D.A. and Heggie D.T., 2002: Classification of Australian clastic coastal depositional environments based upon a quantitative analysis of wave, tidal, and river power. *Journal of Sedimentary Research*, Vol. 72, No. 6, Nov, 858–870.
- Harvey N. and Woodroffe C.D., 2008: Australian approaches to coastal vulnerability assessment. *Sustain Sci.*, 3, 67–87.
- Heap A., Bryce S., Ryan D., Radke L., Smith C., Smith R., Harris P. & Heggie D., 2001: Australian Estuaries & Coastal Waterways: A Geoscience Perspective for Improved and Integrated Resource Management. A Report to the National Land & Water Resources Audit; Theme 7: Ecosystem Health. *AGSO Geoscience Australia*, AGSO Record 2001/07, Mar, 125pp.
- Hemer M.A., McInnes K., Church J.A., O’Grady J. and Hunter J.R., 2008: Variability and trends in the Australian wave climate and consequent coastal vulnerability. *CSIRO*, 138pp.
- Hemer M.A., McInnes K., Ranasinghe, R., 2009: Future projections of the East Australian wave climate. Proceedings of the 11<sup>th</sup> International Workshop on wave hindcasting and forecasting and coastal hazards, Halifax, Canada (in press).
- Hoegh-Guldberg, O., 2005: Low coral cover in a high-CO2 world. *J. Geophys. Res. C*, 110, C09S06, doi,10.1029/2004JC002528.
- Hunter J.R., 2009: Estimating sea-level extremes under conditions of uncertain sea-level rise, *Climatic Change*, DOI: 10.1007/s10584-009-9761-6.

- IPCC, 1996: Climate change 1995 - the science of climate change. Contribution of Working Group I to the Second Assessment Report of the Intergovernmental Panel on Climate Change, *Cambridge University Press*, ISBN 0 521 56436 0, 572pp.
- IPCC, 2012: Managing the Risks of Extreme Events and Disasters to Advance Climate Change Adaptation. A Special Report of Working Groups I and II of the Intergovernmental Panel on Climate Change [Field, C.B., V. Barros, T.F. Stocker, D. Qin, D.J. Dokken, K.L. Ebi, M.D. Mastrandrea, K.J. Mach, G.-K. Plattner, S.K. Allen, M. Tignor, and P.M. Midgley (eds.)]. Cambridge University Press, Cambridge, UK, and New York, NY, USA, 582 pp.
- IPCC, 2013: Climate Change 2013: The Physical Science Basis. Contribution of Working Group I to the Fifth Assessment Report of the Intergovernmental Panel on Climate Change [Stocker, T.F., D. Qin, G.-K. Plattner, M. Tignor, S.K. Allen, J. Boschung, A. Nauels, Y. Xia, V. Bex and P.M. Midgley (eds.)]. Cambridge University Press, Cambridge, United Kingdom and New York, NY, USA, 1535 pp.
- IPCC, 2014a: Climate Change 2014: Impacts, Adaptation, and Vulnerability. Part A: Global and Sectoral Aspects. Contribution of Working Group II to the Fifth Assessment Report of the Intergovernmental Panel on Climate Change [Field, C.B., V.R. Barros, D.J. Dokken, K.J. Mach, M.D. Mastrandrea, T.E. Bilir, M. Chatterjee, K.L. Ebi, Y.O. Estrada, R.C. Genova, B. Girma, E.S. Kissel, A.N. Levy, S. MacCracken, P.R. Mastrandrea, and L.L. White (eds.)]. Cambridge University Press, Cambridge, United Kingdom and New York, NY, USA, 1132 pp.
- IPCC, 2014b: Climate Change 2014: Impacts, Adaptation, and Vulnerability. Part B: Regional Aspects. Contribution of Working Group II to the Fifth Assessment Report of the Intergovernmental Panel on Climate Change [Barros, V.R., C.B. Field, D.J. Dokken, M.D. Mastrandrea, K.J. Mach, T.E. Bilir, M. Chatterjee, K.L. Ebi, Y.O. Estrada, R.C. Genova, B. Girma, E.S. Kissel, A.N. Levy, S. MacCracken, P.R. Mastrandrea, and L.L. White (eds.)]. *Cambridge University Press*, Cambridge, United Kingdom and New York, NY, USA, 688 pp.
- IPCC, 2014c: Climate Change 2014: Synthesis Report. Contribution of Working Groups I, II and III to the Fifth Assessment Report of the Intergovernmental Panel on Climate Change [Core Writing Team, R.K. Pachauri and L.A. Meyer (eds.)]. IPCC, Geneva, Switzerland, 151 pp.
- Knutson T.R., McBride J.L., Chan J., Emanuel K., Holland G., Landsea C., Held I., Kossin J.P., Srivastava A.K. and Sugi M., 2010: Tropical cyclones and climate change. *Nature Geoscience*, 3, 15 –163.
- McInnes, K.L., Walsh K.J.E., Hubbert G.D. and Beer T., 2003: Impact of sea-level rise and storm surges on a coastal community. *Nat. Hazards*, 30, 187-207.
- McInnes K., Macadam I., Abbs D., O'Farrell S.P., O'Grady J., and Ranasinghe R., 2007: Projected changes in climatological forcing conditions for coastal erosion in NSW. Tech Report, *CSIRO*, Melbourne, Australia, 38pp.
- McInnes K.L., White C.J., Haigh I.D., Mark A. Hemer M.A., Hoeke R.K., Holbrook N.J., Kiem A.S., Oliver E.C.J., Ranasinghe R., Walsh K.J.E., Westra S. and Cox R., 2016: Natural hazards in Australia: sea level and coastal extremes. *Climatic Change*, doi:10.1007/s10584-016-1647-8.
- Meyers G., McIntosh P., Pigot L. and Pook M., 2007: The years of El Niño, La Niña, and interactions with the tropical Indian ocean. *Journal of Climate*, 20, 2872-2880.
- Mills G.A., Webb R., Davidson N. E., Kepert J., Seed A. and Abbs D., 2010: The Pasha Bulker east coast low of 8 June 2007. *Centre for Australian Weather and Climate Research*, Australia, CAWCR Technical Report 23.
- NCCOE, 1991: Guidelines for responding to the effects of climatic change in coastal engineering design. National Committee on Coastal and Ocean Engineering, *The Institution of Engineers, Australia*, ISBN 85825 564 2, 50pp.
- NCCOE, 1993: At what price data? National Committee on Coastal and Ocean Engineering, *The Institution of Engineers, Australia*, ISBN 85825-596-0, November, 28pp.
- NCCOE, 1995: Coastal zone management research needs. Outcomes arising from a priority setting workshop on coastal zone management research needs held in Sydney 11-12th October 1994, funded by the



- Department of Environment, Sport and Territories. National Committee on Coastal and Ocean Engineering, *The Institution of Engineers, Australia*, February, 50pp.
- NCCOE, 2004a: Guidelines for responding to the effects of climate change in coastal and ocean engineering. National Committee on Coastal and Ocean Engineering, *Engineers Australia*, 65pp.
- NCCOE, 2004b: Coastal engineering guidelines for working with the Australian coast in an ecologically sustainable way. National Committee on Coastal and Ocean Engineering, *Engineers Australia*.
- NCCOE, 2012a: Guidelines for responding to the effects of climate change in coastal and ocean engineering. National Committee on Coastal and Ocean Engineering, *Engineers Australia*, 3<sup>rd</sup> ed., June, 74pp.
- NCCOE, 2012b: Coastal engineering guidelines for working with the Australian coast in an ecologically sustainable way. National Committee on Coastal and Ocean Engineering, *Engineers Australia*, 2<sup>nd</sup> ed., 160pp.
- NCCOE, 2012c: Climate Change adaptation guidelines in coastal management and planning. National Committee on Coastal and Ocean Engineering, *Engineers Australia*, 113pp.
- NCCOE, 2017: Coastal engineering guidelines for working with the Australian coast in an ecologically sustainable way. National Committee on Coastal and Ocean Engineering, *Engineers Australia*, 3<sup>rd</sup> ed. (in prep).
- NRMCMC, 2006: National cooperative approach to integrated coastal zone management: framework and implementation plan. Natural Resource Management Ministerial Council, *Commonwealth of Australia*.
- RAC, 1993: Coastal zone enquiry: final report. Resource Assessment Commission, Commonwealth of Australia, *Australian Government Publishing Service*, Canberra, 664 pp.
- Ranasinghe R., Watson P., Lord D., Hanslow D. and Cowell P., 2007: Sea level rise, coastal recession, and the Bruun rule. Proceedings of Coasts and Ports '07, Melbourne, VIC, Australia, *Engineers Australia* (on CDROM).
- Ranasinghe R. and Stive M.J.F., 2009: Rising Seas and Retreating Coastlines, *Climatic Change* (Editorial Commentary), DOI 10.1007/s10584-009-9593-3
- Ranasinghe R., Callaghan D. and Stive M.J.F., 2009a: Probabilistic modelling of coastal recession due to sea level rise. Proc Coasts and Ports '09, Wellington, New Zealand, *Engineers Australia*.
- Ranasinghe R., Callaghan D. and Stive M.J.F., 2009b: A process based approach to derive probabilistic estimates of coastal recession due to sea level rise. Proceedings of Coastal Dynamics 2009, Tokyo, Japan, *World Scientific*.
- Ryan D.A., Heap A.D., Radke L.C., and Heggie D.T., 2003: Conceptual models of Australia's estuaries and waterways. Applications for coastal resource management. *Geoscience Australia*, GA Record 2003/09, 145pp.
- Sharples C., Carley J. and Attwater C., 2008: Three pass assessment approach to coastal risk management. Proc. IPWEA Conference on Climate Change Response, Coffs Harbour, Aug.
- Stive M.J.F, Ranasinghe R. and Cowell P., 2009: Sea level rise and coastal erosion. In: Handbook of Coastal and Ocean Engineering. *World Scientific* (in press).
- Voice M., Harvey N. and Walsh K., 2006: (Editors) Vulnerability to climate change of Australia's coastal zone: analysis of gaps in methods, data and system thresholds. *Australian Greenhouse Office*, Canberra, Australia. June, 120pp.
- White N.J., Haigh I.D., Church J.A., Koen T., Watson C.S., Pritchard T.R., Watson P.J., Burgette R.J., McInnes K.L., You Z-J, Zhang X., Tregoning P., 2014: Australian sea levels—trends, regional variability and influencing factors. *Earth-Science Reviews*, 136, Sept, 155-174.
- Wilkinson, J.W., 2004: Status of Coral Reefs of the World. Australian Institute of Marine Science, Townsville, 580pp.
- Woodroffe C., 2008: Vulnerability of the Australian Coast to climate change: an international perspective. Proc. IPWEA Conference on Climate Change Response, Coffs Harbour, Aug.

## 8. SELECTED REGIONAL RESOURCE MATERIAL

The following references are provided as a resource facility for assisting in coastal and ocean engineering assessments of climate change vulnerability on a regional basis. The list is derived from a number of sources, is not claimed to be definitive, nor necessarily directly related to climate change, but provides information that may be useful for making engineering assessments of the possible impact of climate change. Earlier reference material generally prior to 2000 is also available in NCCOE (2004). *Note, some jurisdictions are yet to be updated from the previous edition (2012) of this Guideline.*

### 8.1 Northern Territory

- Harper B.A., 2010: Modelling the Tracy storm surge -implications for storm structure and intensity estimation. Proc. Cyclone Tracy Special Session, AMOS Conference 2008, *Australian Meteorological and Oceanographic Journal*, 60, 187-197, Sept.
- SEA, 2006: Darwin storm tide mapping study 2006. Prep by Systems Engineering Australia Pty Ltd for the Northern Territory Dept of Emergency Services, Darwin. SEA Report J0606-PR001C, 119pp, Nov.
- SEA, 2010: High Resolution Storm Tide and Climate Change Impacts Study 2010. Prep by Systems Engineering Australia Pty Ltd for the Northern Territory Dept of Lands and Planning, Darwin. SEA Report J0911-PR001B, 83pp, Jul.
- SEA 2016: NT remote communities storm tide study and inundation mapping. Prep by Systems Engineering Australia Pty Ltd for the Northern Territory Dept of Land Resource Management, Darwin. SEA Report J1507-PR001B, July, 87pp.

### 8.2 Queensland

- Abbs D.J., and McInnes K.L., 2004: Impact of climate change on extreme rainfall and coastal sea levels over South-east Queensland. Part 1: Analysis of extreme rainfall and wind events in a GCM. Report for the *Gold Coast City Council*, Queensland, Australia, 48 pp.
- Allen, M.S. and Callaghan, J., 1999: Extreme wave conditions in the South Queensland coastal region, *Environmental Protection Agency*, Queensland.
- Andrewartha J. and Herzfeld M., 2005: Port Curtis hydrodynamic model evaluation. *Coastal CRC*, Technical Report 90, Dec, 50pp. [http://www.ozcoasts.org.au/pdf/CRC/90\\_PC\\_model\\_evaluation.pdf](http://www.ozcoasts.org.au/pdf/CRC/90_PC_model_evaluation.pdf)
- Beach Protection Authority Queensland, 1979: Capricorn coast beaches. Dec.
- Beach Protection Authority Queensland, 1984: Mulgrave Shire northern beaches. Oct.
- Beach Protection Authority, 1986: Wave data recording programme - Mackay region, Rep. no. W02.2
- Beach Protection Authority Queensland, 1989: Hervey Bay beaches. Jun.
- Bell S. and Amghar M. 2002: Modelling scenarios for South East Queensland regional water quality management strategy. *Coastal CRC*, Technical Report No. 2, Feb, 174pp. <http://www.ozcoasts.org.au/pdf/CRC/2-SEQmod.pdf>
- Bostock H., Ryan D., Brooke B., Skene, D. and Pietsch T., 2006: Holocene evolution and modern sediment accumulation on a tropical macro-tidal coast - Keppel Bay, central Queensland, Australia. *Coastal CRC*, Technical Report 50, Jun, 66pp. [http://www.ozcoasts.org.au/pdf/CRC/50\\_Holocene\\_accumulation\\_macrotidal.pdf](http://www.ozcoasts.org.au/pdf/CRC/50_Holocene_accumulation_macrotidal.pdf)
- Brooke B., Ryan D., Radke L., Pietsch T., Olley J., Douglas G., Flood P. and Packett B., 2006: A 1500 year record of coastal sediment accumulation preserved in beach deposits at Keppel Bay, Queensland, Australia. *Coastal CRC*, Technical Report 51, Jun, 48pp. [http://www.ozcoasts.org.au/pdf/CRC/51\\_1500years\\_sediment\\_Keppel\\_screen.pdf](http://www.ozcoasts.org.au/pdf/CRC/51_1500years_sediment_Keppel_screen.pdf)

- Chamberlain S. and Tomlinson R., 2006: Noosa River entrance channel dynamics. *Coastal CRC*, Technical Report 61, 84pp. <http://www.ozcoasts.org.au/pdf/CRC/61-noosa.pdf>
- Crimp S., Balston J. and Ash A., 2004: Climate change in the Cairns and Great Barrier Reef region: scope and focus for an integrated assessment. *Australian Greenhouse Office*, 103pp.
- CSIRO, 2000: Impact of sea level rise and storm surges on coastal resorts - Final report. *CSIRO Div of Atmospheric Research*, Jan, 17pp.
- CW, 2003a: Caloundra City storm tide study – development report. Prepared for *Caloundra City Council* by Connell Wagner and Lawson & Treloar, Aug, 140pp.
- CW, 2003b: Caloundra City storm tide study – counter disaster planning report. Prepared for *Caloundra City Council* by Connell Wagner and Lawson & Treloar, Aug, 49pp.
- CW, 2004: Joint probability assessment storm tide and freshwater flooding – Stage 1a report - *Caloundra City Council*. Prepared by Connell Wagner, Mar, 20pp.
- CW, 2005a: Maroochy Shire storm tide study – development report. Prepared for *Caloundra City Council* by Connell Wagner and Lawson & Treloar, Nov, 140pp.
- CW, 2005b: Maroochy Shire storm tide study – counter disaster planning report. Prepared for *Caloundra City Council* by Connell Wagner and Lawson & Treloar, Nov, 49pp.
- CW, 2005c: Stage 1b draft report - Joint probability assessment storm tide and freshwater flooding – Maroochy Shire Council. Prepared by Connell Wagner, *Maroochy Shire Council*, Nov, 40pp.
- Dawson J.L. and Smithers S.G, 2010: Shoreline and beach volume change between 1967 and 2007 at Raine Island, Great Barrier Reef, Australia. *Global and Planetary Change*, Vol 72, 3, June, 141-154.
- DERM, 2011: Queensland coastal processes and climate change. Queensland Dept of Environment and Resource Management, Apr, 56pp. [Available online at: <https://www.ehp.qld.gov.au/climatechange/centre/pdf/qld-coastal-processes-and-climate-change.pdf> ]
- DEHP, 2013: Coastal hazards technical guideline – determining coastal hazard areas. Queensland Dept of Environment and Heritage Protection, Apr, 21pp. [Available online at: <https://www.ehp.qld.gov.au/coastalplan/pdf/hazards-guideline.pdf> ]
- DEHP, 2014: Coastal management plan. Queensland Dept of Environment and Heritage Protection, Mar, 21pp. [Available online at: <https://www.ehp.qld.gov.au/coastalplan/pdf/coastal-management-plan.pdf> ]
- GEMS, 2000: Gold Coast Broadwater study – storm tide return periods and 1974 floodwater modelling. Prepared by Global Environmental Modelling Systems in association with CSIRO Division of Atmospheric Research, *Gold Coast City Council*, May, 58pp.
- GHD/SEA, 2003: Storm tide modelling study of the Whitsunday coast and resort islands. Prep. for *Whitsunday Shire Council* by GHD Pty Ltd in assoc. with Systems Engineering Australia Pty Ltd, 150pp, November.
- GHD/SEA, 2007: Townsville – Thuringowa storm tide study. Prep. for *Townsville City Council* by GHD Pty Ltd in assoc. with Systems Engineering Australia Pty Ltd, 210pp, April.
- GHD/SEA, 2007: South east Queensland storm tide review – recommendations for modelling, risk assessment and mitigation strategies. Prep. for *Caboolture Shire Council* on behalf of SEQDMAG by GHD Pty Ltd in assoc. with Systems Engineering Australia Pty Ltd, 99pp, Nov.
- GHD/SEA, 2009: Innisfail – Mission Beach storm tide study. Prep. for *Cassowary Coast Regional Council* by GHD Pty Ltd in assoc. with Systems Engineering Australia Pty Ltd, 240pp, June.
- GHD, 2012: Gold Coast storm tide study. Prep. for *Gold Coast City Council* by GHD Pty Ltd, , May, 109pp.
- GHD, 2012: Townsville City Council coastal hazard adaptation strategy study. Prepared by GHD Pty Ltd for the Local Government Association of Queensland, Townsville City Council and the Department of Environment and Heritage Protection, 369pp. [Available online at: <http://www.townsville.qld.gov.au/council/projects/Pages/TownsvilleCoastalHazardAdaptationStrategyPilotProject.aspx> ]

- GHD, 2013: Gulf of Carpentaria storm tide and inundation study. Prepared by GHD Pty Ltd in association with the Australian Maritime College. State of Queensland, Department of Science, Information Technology, Innovation and the Arts, Mar, 456pp. [Available online at: <http://qldgov.softlinkhosting.com.au/liberty/opac/search.do?limit=All&anonymous=true&highlightTerms=gulf&includeNon-PhysicalItems=true&action=search&resourceCollection=All&branch=All&corporation=DERM&operator=AND&url=%2Fliberty%2Fopac%2Fsearch.do&queryTerm=storm+tide+inundation+gulf&mode=ADVANCED> ]
- GHD, 2014a: NDRP storm tide hazard interpolation study. State of Queensland, Department of Science, Information Technology, Innovation and the Arts, Jun, 97pp. [Available online at: <https://data.qld.gov.au/dataset/ndrp-storm-tide-hazard-interpolation-series> ]
- GHD, 2014b: Brisbane City Council coastal plan implementation study. Prepared for City Design. Dec, 155pp.
- Hardy T.A., Mason, L.B., Astorquia A. and Harper B.A., 2004a: Queensland climate change and community vulnerability to tropical cyclones - ocean hazards assessment - stage 2: tropical cyclone-induced water levels and waves: Hervey Bay and Sunshine Coast. Report prepared by James Cook University Marine Modelling Unit in association with Systems Engineering Australia Pty Ltd, *Queensland Government*, May, 109pp.
- Hardy T.A., Mason L.B. and Astorquia A., 2004b: Queensland climate change and community vulnerability to tropical cyclones – ocean hazards assessment: Stage 3 - the frequency of surge plus tide during tropical cyclones for selected open coast locations along the Queensland East coast, *Queensland Government*, Jul, 61pp.
- Harper B.A. 2001b: Queensland climate change and community vulnerability to tropical cyclones - ocean hazards assessment - Stage 1A – Operational Manual, Report prep by Systems Engineering Australia Pty Ltd, *Queensland Government*, March, 75pp.
- Herzfeld M., Parslow J., Andrewartha J., Sakov P. and Webster I.T., 2004: Hydrodynamic modelling of the Port Curtis region. *Coastal CRC*, Technical Report No. 7, Apr, 51pp. [http://www.ozcoasts.org.au/pdf/CRC/7-cm\\_port\\_curtis\\_modelling.pdf](http://www.ozcoasts.org.au/pdf/CRC/7-cm_port_curtis_modelling.pdf)
- Herzfeld M., Andrewartha J., Sakov P. and Webster I., 2006: Numerical hydrodynamic modelling of the Fitzroy Estuary. *Coastal CRC*, Technical Report 38, Mar, 100pp. [http://www.ozcoasts.org.au/pdf/CRC/38\\_fitzroy\\_numerical\\_modelling\\_screen.pdf](http://www.ozcoasts.org.au/pdf/CRC/38_fitzroy_numerical_modelling_screen.pdf)
- JWP, 1995: Noosa River flood study. Prepared by John Wilson and Partners and Lawson & Treloar, *Noosa Shire Council*, Apr, 285pp.
- JWP, 2004: Pine Rivers / Hays Inlet storm surge study. Prepared by John Wilson and Partners and Lawson & Treloar, *Pine Rivers Shire Council*, Dec, 35pp.
- LGAQ, 2007: Adapting to climate change – a Queensland local government guide. Local Government Association of Queensland Inc., June, 55pp.
- LGAQ 2016: QCoast 2100 Minimum standards and guidelines. Apr, draft, 58pp. [Available online at: [http://www.qcoast2100.com.au/documents/6143606/6155749/QCoast2100\\_Minimum%20Standards%20and%20Guidelines\\_Draft\\_V4\\_SR2.pdf](http://www.qcoast2100.com.au/documents/6143606/6155749/QCoast2100_Minimum%20Standards%20and%20Guidelines_Draft_V4_SR2.pdf) ]
- McCauley E. and Tomlinson R., 2006: The evolution of jumpinpin inlet. *Coastal CRC*, Technical Report 62, 96pp. <http://www.ozcoasts.org.au/pdf/CRC/62-jumpinpin.pdf>
- Margvelashvili N., Robson B., Sakov P., Webster I.T., Parslow J. Herzfeld M. and Andrewartha J., 2003: Numerical modelling of hydrodynamics, sediment transport and biogeochemistry in the Fitzroy Estuary. *Coastal CRC*, Technical Report No. 9, Oct, 50pp. [http://www.ozcoasts.org.au/pdf/CRC/9-fitzroy\\_hydro\\_models.pdf](http://www.ozcoasts.org.au/pdf/CRC/9-fitzroy_hydro_models.pdf)
- Margvelashvili N., Herzfeld M. and Webster I.T., 2006: Modelling of fine-sediment transport in the Fitzroy Estuary and Keppel Bay. *Coastal CRC*, Technical Report 39. Jun, 47pp. [http://www.ozcoasts.org.au/pdf/CRC/39\\_fine\\_sediment\\_fitzroy\\_keppel.pdf](http://www.ozcoasts.org.au/pdf/CRC/39_fine_sediment_fitzroy_keppel.pdf)

- Radke L.C., Ford P.W., Webster I.T., Atkinson I. and Oubelkheir K., 2006: Keppel Bay: physical processes and biogeochemical engineering. *Coastal CRC*, Technical Report 34, 163pp. [http://www.oz-coasts.org.au/pdf/CRC/34\\_keppel\\_physical\\_biogeochemical.pdf](http://www.oz-coasts.org.au/pdf/CRC/34_keppel_physical_biogeochemical.pdf)
- Ryan D., Brooke B., Bostock H., Collins L., Buchanan C., Siwabessy J., Margvelashvili N., Radke L., Skene, D. and Hamilton L., 2006: Geomorphology and sediment transport in Keppel Bay, central Queensland, Australia. *Coastal CRC*, Technical Report 49, Jun, 46pp. [http://www.oz-coasts.org.au/pdf/CRC/49\\_geomorph\\_sediment\\_Keppel\\_screen.pdf](http://www.oz-coasts.org.au/pdf/CRC/49_geomorph_sediment_Keppel_screen.pdf)
- SEA, 2011: Torres Strait extreme water level study. Prepared for *Torres Strait Regional Authority* by Systems Engineering Australia Pty Ltd, draft, Jul, 386pp. [Available online at: [http://www.tsra.gov.au/data/assets/pdf\\_file/0009/3996/Torres-Strait-Extreme-Water-Level-Study-Dec.pdf](http://www.tsra.gov.au/data/assets/pdf_file/0009/3996/Torres-Strait-Extreme-Water-Level-Study-Dec.pdf) ]
- SEA 2014: A coastal vulnerability assessment methodology for Torres Strait communities – Pilot Study. Prepared by Systems Engineering Australia Pty Ltd for the Torres Strait Regional Authority, Aug, 54pp.

### 8.3 New South Wales

- CSIRO, 2012a: Mapping and responding to coastal inundation. 1. Modelling and mapping of coastal inundation under future sea level rise. Prep for Sydney Coastal Councils, 84pp.
- CSIRO, 2012b: Mapping and responding to coastal inundation. 2. Incorporating coastal inundation & sea level rise into local and regional planning responses. Prep for Sydney Coastal Councils, 46pp.
- DECCW, 2008: Fort Denison sea level rise vulnerability study. Coastal Unit. *Department of Environment, Climate Change and Water NSW*. Oct, 109pp.
- DECCW, 2009b: Derivation of the NSW Government's sea level rise planning benchmarks - technical note. Department of Environment, Climate Change and Water NSW, Oct, 10pp. <http://www.environment.nsw.gov.au/resources/climatechange/09709technotesealevelrise.pdf>
- DECCW, 2010: Coastal risk management guide: incorporating sea level rise benchmarks in coastal risk assessments. Department of Environment, Climate Change and Water NSW, Aug, 12pp. <http://www.environment.nsw.gov.au/resources/water/coasts/10760CoastRiskManGde.pdf>
- Hanslow D.J., Dela-Cruz J., Morris B.D., Kinsela M.A., Foulsham E., Linklater M., and Pritchard T.R., 2016. Regional Scale Coastal Mapping to Underpin Strategic Land Use Planning in South East Australia. In: Vila-Concejo, A.; Bruce, E.; Kennedy, D.M., and McCarroll, R.J. (eds.), *Proceedings of the 14th International Coastal Symposium* (Sydney, Australia). *Journal of Coastal Research*, Special Issue, No. 75, pp. XX-XX. Coconut Creek (Florida), ISSN 0749-0208.
- Hemer M.A., McInnes K., Ranasinghe, R., 2009: Future Projections of the east Australian wave climate. *Proceedings of the 11<sup>th</sup> International Workshop on wave hindcasting and forecasting and coastal hazards*, Halifax, Canada (in press)
- Kinsela, M.A., Morris, B.D., Daley, M.J.A. and Hanslow, D.J., 2016. A Flexible Approach to Forecasting Coastline Change on Wave-Dominated Beaches. In: Vila-Concejo, A.; Bruce, E.; Kennedy, D.M., and McCarroll, R.J. (eds.), *Proceedings of the 14th International Coastal Symposium* (Sydney, Australia), Special Issue, No. 75, pp. 952-956. Coconut Creek (Florida), ISSN 0749-0208.
- Lord D. and Kulmar M., 2000: The 1974 storms revisited: 25 years experience in ocean wave measurements along the southeast Australian coast. Proc. 27<sup>th</sup> Intl. Conf. Coastal Engin., ASCE, 559-572.
- Office of Environment & Heritage, 2017. Coastal management manual – Toolkit, <http://www.environment.nsw.gov.au/coasts/coastreforms-toolkit.htm>.
- Ranasinghe R., Lord D., Hanslow D., and McInnes K., 2007: Climate Change impacts on NSW coasts and estuaries. *Proceedings of Coasts and Ports '07*, Melbourne, VIC, Australia, *Engineers Australia* (on CDROM).
- You B., Lord D., Watson P., 2009: Estimation of relative mean sea level rise from Fort Denison tide gauge data. *Coasts and Ports 2009*. *Proceedings of the 19th Australasian Coastal and Ocean Engineering*

Conference and the 12th Australasian Ports and Harbour Conference. *IPENZ/ Engineers Australia*, Wellington New Zealand, September.

## 8.4 Victoria

CES, 2008: Ocean access boat ramp Bastion Point, Mallacoota: EES – Coastal Processes Study, Supplementary Report. Prepared for *Victorian Department of Sustainability and Environment* by Coastal Engineering Solutions Pty Ltd., Jan.

McInnes K. and Hubbert G., 2003: A numerical modelling study of storm surges in Bass Strait. *Australian Meteorological Magazine*, 52, 143-156.

McInnes K.L., Abbs D.J. and, J.A. Bathols, 2005a: Climate Change in Eastern Victoria. Stage 1 Report: The effect of climate change on coastal wind and weather patterns. Report to *Gippsland Coastal Board*. 26 pp.

McInnes K.L., Macadam I., Hubbert G.D., Abbs D.J., and Bathols J.A., 2005b: Climate Change in Eastern Victoria. Stage 2 Report: The effect of climate change on storm surges. Report to *Gippsland Coastal Board*. June, 37 pp.

McInnes K.L., Macadam I. and Hubbert G.D., 2006: Climate Change in Eastern Victoria. Stage 3 Report: The effect of climate change on extreme sea levels in Corner Inlet and the Gippsland Lakes. Report to *Gippsland Coastal Board*. July, 40 pp.

Miscellaneous WWW-Based Resources:

Coastal Action Plans on Regional Coastal Boards

<http://www.gcb.vic.gov.au/>  
<http://www.ccb.vic.gov.au/>  
<http://www.wcb.vic.gov.au/>

## 8.5 Tasmania

Carley J., Blacka M., Cox R., Attwater C. and Watson P., 2008: Modelling coastal processes & hazards to assess sea level rise impacts into a planning scheme. Proc. *IPWEA Conference on Climate Change Response*, Coffs Harbour, Aug.

Clarence City Council, 2008: Climate change impacts on Clarence coastal areas. Dec, 129pp.

Hunter J., Coleman R. and Pugh D. 2003: The sea level at Port Arthur, Tasmania, from 1841 to the present. *Geophysical Research Letters*, 30, 7, 1401, doi:10.1029/2002GL 016813.

Rigby J., 2005: Sea level rise and coastal settlements: an analysis of adaptive decision making within integrated coastal zone management. Report to the Tasmanian Government on the findings of an Honours study within the University of Tasmania. *Antarctic Climate and Ecosystems CRC*, Hobart, Tasmania.

## 8.6 South Australia

Bardsley D. 2006: There's a change on the way – An initial integrated assessment of projected climate change impacts and adaptation options for Natural Resource Management in the Adelaide and Mt Lofty Ranges Region. *DWLBC Report 2006/06*.

Bourman R.P., Murray-Wallace C.V. and Harvey N. 2016: *Coastal Landscapes of South Australia*. University of Adelaide Press. <https://www.adelaide.edu.au/press/titles/coast-sa/coast-sa-ebook.pdf>

Caton B., Fotheringham D., Haby N., Royal M., Sandercock R. and Taylor, R., 2007: Northern Yorke coastal conservation assessment and management plan. Prepared for the Northern Yorke NRM Board by the Department for Environment and Heritage, South Australia.

Caton B., Fotheringham D., Lock C., Royal M., Sandercock R. and Taylor R. 2007: Southern Fleurieu coastal conservation assessment and action plan. Prepared for Adelaide and Mt Lofty Ranges NRM Board, Alexandrina Council, City of Victor Harbor, Department for Environment and Heritage, Goolwa to

- Wellington LAP, Yankalilla Council and Department for Environment and Heritage, South Australia. (see AMLR website)
- Coast Protection Board 2012: *Policy Document*. <http://www.environment.sa.gov.au/files/sharedassets/public/coasts/cons-gen-coastprotectionboard-policy.pdf>
- Coast Protection Board, 1991: *Policy on coast protection and new coastal development*. [http://www.environment.sa.gov.au/files/sharedassets/public/coasts/cpb\\_policy\\_1991.pdf](http://www.environment.sa.gov.au/files/sharedassets/public/coasts/cpb_policy_1991.pdf)
- Coast Protection Board, 2015: *Position Paper, May 2015*. [http://www.environment.sa.gov.au/files/sharedassets/public/corporate/about\\_us/cpb-position-paper-may-2015.pdf](http://www.environment.sa.gov.au/files/sharedassets/public/corporate/about_us/cpb-position-paper-may-2015.pdf)
- Coast Protection Board, 2012: *Strategic Plan 2012-2017*. <http://www.environment.sa.gov.au/files/sharedassets/public/coasts/coast-protection-board-strategic-plan-2012-2017-plan.pdf>
- Coleman P. and Cook F., 2008: Little Para Estuary: saltmarsh retreat zone, delta environmental for the City of Salisbury.
- Department for Environment and Heritage, 2005: *Adelaide's Living Beaches - A strategy for 2005-2025, Technical Report*. [http://www.environment.sa.gov.au/files/sharedassets/public/coasts/alb\\_technical\\_report.pdf](http://www.environment.sa.gov.au/files/sharedassets/public/coasts/alb_technical_report.pdf)
- Department of Environment, Water and Natural Resources, 2013: *Coastal Planning Information Package – a guide to coastal development assessment and planning policy*. <http://www.environment.sa.gov.au/files/sharedassets/public/coasts/coastal-planning-information-package-gen.pdf>
- Fotheringham D. and Coleman P., 2008: Salt marshes. Chapter 7 in natural history of Gulf St Vincent. Shepherd S.A., Bryars S., Kirkegaard I., Harbison P., Jennings J.T., (eds), Royal Society of South Australia Inc.
- Government of South Australia, 2016: Regional Adaptation Plans. [http://www.environment.sa.gov.au/Science/Science\\_research/climate-change/climate-change-initiatives-in-south-australia/adapting-to-climate-change/region-based-approach-adaptation/regional-adaptation-plans](http://www.environment.sa.gov.au/Science/Science_research/climate-change/climate-change-initiatives-in-south-australia/adapting-to-climate-change/region-based-approach-adaptation/regional-adaptation-plans)
- Government of South Australia, 2015: *South Australia's Climate Change Policy – Towards a low carbon economy*. <http://www.environment.sa.gov.au/files/sharedassets/public/climate-change/sa-climate-change-strategy-2015-2050-towards-low-carbon-economy.pdf>
- Harvey N., Belperio A., Bourman R. and Mitchell W., 2002: Geologic, isostatic and anthropogenic signals affecting sea level records at tide gauge sites in southern Australia Sahagian, Dork, Zerbini, Susanna (editors), Global and regional sea-level changes and the hydrological cycle, *Global and Planetary Change*, 32 (1).
- McInnes K.L., Suppiah R., Whetton P.H., Hennessey K.J., and Jones R.N., 2003: Climate change in South Australia: assessment of climate change, impacts and possible adaptation strategies relevant to South Australia, *CSIRO Atmospheric Research* for the South Australian Government.
- Suppiah R, Preston B, Whetton P.H., McInnes K.L., Jones R.N., Macadam I., Bathois J., and Kirono D., 2006: Climate change under enhanced greenhouse conditions in South Australia. An updated report on: Assessment of climate change, impacts and risk management strategies relevant to South Australia, *CSIRO*.
- Tonkin Consulting, 2005: Port Adelaide seawater stormwater flooding study for City of Port Adelaide Enfield.

## 8.7 Western Australia

- Bicknell, C., 2010, Sea level Change in Western Australia, Application to Coastal Planning, Western Australia Dept of Transport, Coastal Infrastructure, Coastal Engineering Group.
- Coastal Zone Management and Damara, 2008: Cottesloe climate change foreshore vulnerability, Prepared for *Town of Cottesloe* Perth, Western Australia, June 2008.

- Damara, 2007: Mandurah region -development in floodprone areas and implications of climate change, Prepared by Damara WA Pty Ltd, Report no. 40-61-01-C, Perth, Western Australia, October.
- Damara, 2008: Coastal geomorphology: proposed LNG hub Locations in the Kimberley region Western Australia. Prepared for *Northern Development Taskforce Environment Experts Working Group* by Damara WA Pty Ltd, Perth, Western Australia, September.
- Damara, 2009: Pilbara region parametric cyclone modelling: climate change analysis, Prepared by Damara WA Pty Ltd, Report no. 77-01-Rev B, Perth, Western Australia, February.
- Damara, 2009: Perth metropolitan region coastal protection structures field inspections & condition assessments, Prepared for the *Department of Transport* by Damara WA Pty Ltd, Report no. 81-01-Rev 0, Perth, Western Australia, October.
- Eliot I., Tonts M., Eliot M., Walsh G. and Collins J. 2005: Recreational beach users in the Perth metropolitan area, The Institute of Regional Development, School of Earth and Geographical Sciences, Faculty of Natural and Agricultural Sciences, *University of Western Australia*.
- Eliot M., 2005: Storminess of the Fremantle coastline 1898-2003. *Indian Ocean Marine Environment Conference*, Perth, 14 February.
- Feng M, Li Y. and Meyers G. 2004: Multidecadal variations of Fremantle sea level: footprint of climate variability in the tropical Pacific, *Geophysical Research Letters*, vol. 31, no. 16, pp. L16302.1-L16302.4.
- Gozzard J. R., 2009: WACoast – a knowledge base for coastal managers in 5<sup>th</sup> Western Australian *State Coastal Conference 2009*, Perth, Western Australia, p. 7.
- Green S. 2008: Development of conceptual models for erosion hazard assessment on a rocky embayed coast: Trigg to Sorrento, Western Australia, Unpublished Geography Honours Thesis, *University of Western Australia*, Perth, Western Australia.
- Hosseini S.E. and Willis M.J. 2009: Analysis of longterm cyclone track records for estimation of extreme design conditions. *5th WA Coastal Conference*, Perth, Western Australia, p. 8.
- IOCI, 2002: Climate variability and change in southwest Western Australia. *Indian Ocean Climate Initiative Panel*.
- Jones A. 2005: Potential coastal erosion of the Swan coastal plain due to long-term sea level rise', Chapter 7 in Natural hazard risk in Perth, WA, *Geoscience Australia*.
- Lemm A., Hegge B.J. and Masselink G. 1999: Offshore wave climate, Perth, Western Australia, *Marine & Freshwater Research*, vol. 50, no. 2, 95-102.
- Li F., Roncevich L., Bicknell C., Lowry R. and Ilich K. 2009: Storm waves and their temporal and directional distribution, Perth, 1994-2008. *5th WA Coastal Conference*, Perth, Western Australia.
- Masselink G. and Pattiaratchi C.B., 2001: Characteristics of the sea breeze system in Perth, Western Australia, and its effect on the nearshore wave climate, *Journal of Coastal Research*, vol. 17, 1, 173-187.
- Pattiaratchi C. and Eliot M.J., 2005: How our regional sea level has changed, *Indian Ocean Climate Initiative*, Climate Note 9/05. <http://www.ioci.org.au/publications>
- Pearce A.F., Buchan S., Chiffings T., D'Adamo N., Fandry C., Fearn P., Mills D., Phillips R. and Simpson, C. 2003: A review of the oceanography of the Dampier Archipelago, Western Australia, In *The marine flora and fauna of Dampier, Western Australia*, eds F. E. Wells, D. I. Walker & D. S. Jones, Western Australian Museum, Perth, Western Australia, 13-50.
- Richardson L., Matthews E. and Heap A., 2005: Geomorphology and Sedimentology of the South Western Planning Area of Australia, Review and synthesis of relevant literature in support of Regional Marine Planning, *Geoscience Australia*, Record 2005/17, 124p.
- Sanderson P.G., 2000: A comparison of reef protected environments in Western Australia, *Earth Surface Processes and Landforms*, vol. 25, 397-419.
- Sanderson P.G., Eliot I., Hegge B. and Maxwell S., 2000: Regional variation of coastal morphology in southwestern Australia: a synthesis, *Geomorphology*, vol. 34, no. 1-2, 73-88.



- Semeniuk V., 2008: Holocene sedimentation, stratigraphy, biostratigraphy, and history of the Canning Coast, north-western Australia, *Journal of the Royal Society of Western Australia*, Vol. 91 supplement Part 1.
- Short A. 2005: Beaches of the Western Australian Coast: Eucla to Roebuck Bay, *Sydney University Press*, Sydney.
- Short A., 2006: *Beaches of the Northern Australia Coast: The Kimberley, Northern Territory and Cape York*, *Sydney University Press*, Sydney.
- Travers A., 2007: Low-energy beach morphology with respect to physical setting: a case study from Cockburn Sound, Southwestern Australia, *Journal of Coastal Research*, vol. 23, no. 2, 429–444
- WAPC, 2003: Statement of Planning Policy No. 2.6: State Coastal Planning Policy, Prepared by *Western Australian Planning Commission*, Perth, Western Australia, April 2003.

## 8.8 General

- BoM, 2016: Baseline Sea Level Monitoring Project <http://www.bom.gov.au/oceanography/projects/abslmp/abslmp.shtml>
- Church J.A., White N.J. and Hunter J.R., 2006: Sea-level rise at tropical Pacific and Indian Ocean islands. *Global and Planetary Change*, 53, 155-168.
- Evans J.L., Ryan B.F. and McGregor J.L., 1994: A numerical exploration of the sensitivity of tropical cyclone rainfall intensity to sea surface temperature, *J. Climate*, 7, 616-623.
- George J., 2009: Managing our coastal zone in a changing climate: the time to act is now. House of Representatives Standing Committee on Climate Change, Water, Environment and the Arts, *Commonwealth of Australia*, Oct. Refer: <http://www.aph.gov.au/House/committee/ccwea/coastalzone/report/Front%20Pages.pdf>
- Harper B.A., Gourlay M.R. and Jones C.M., 2001: Storm tide risk assessment for the Cocos (Keeling) Islands, Proc 15th Australasian Conference on Coastal and Ocean Engin, Coasts & Ports 2001, *IEAust*, Gold Coast, Sept, 2001.
- Harper B.A. and Callaghan J., 2006: On the importance of reviewing historical tropical cyclone intensities. *American Meteorological Society*, 27<sup>th</sup> Conference on Hurricanes and Tropical Meteorology, 2C.1, Monterey, Apr.
- Hopkins L.C. and Holland G.J., 1997: Australian heavy-rain days and associated East Coast Cyclones: 1958-92. *Journal of Climate*, 10, 621-635.
- Lavender S. and Walsh K. 2011: Dynamically downscaled simulations of Australian region tropical cyclones in current and future climates. *Geophysical Research Letters*, 38.
- McInnes K.L., Leslie L.M. and McBride J. L., 1992: Numerical simulation of cut-off lows on the Australian east coast: sensitivity to sea-surface temperature. *J. Climate*, 12, 783-795.
- NCCARF, 2016: CoastAdapt online coastal climate risk management framework. <https://www.nccarf.edu.au/CoastAdapt-beta-release>
- NLWA, 2008: The National Land & Water Resources Audit. The objective of the Audit was to develop information to support the assessment of change in natural resources as a result of government programs. <http://lwa.gov.au/programs/national-land-and-water-resources-audit>
- NZME, 2004: Coastal hazards and climate change: a guidance manual for local government in New Zealand. New Zealand Climate Change Office, *Ministry for the Environment*, May, 122pp.
- OzCoasts 2008: Database containing information on ~1,000 Australian estuaries and associated habitats, based on modelled river flow, wave and tide data plus interpretation of air photographs and satellite imagery. <http://www.ozcoasts.gov.au/index.jsp>
- PSMSL, 2016: Permanent Service for Mean Sea Level. <http://www.psmsl.org/>

- SERM2, 2003: Simple Estuarine Response Model II. The SERM II project is an extension of the Simple Estuarine Response Model (SERM), developed as part of the National Land and Water Resource Audit (NLWRA). <http://www.per.marine.csiro.au/serm2/>
- Walsh K., McInnes K. and Abbs D., 2002: Sea level rise projections and planning in Australia, proc. Coast to Coast 2002, CRC for Coastal Zone, Estuary and Waterway Management, Indooroopilly, Australia.
- Webb A.P. and Kench P.S., 2010: The dynamic response of reef islands to sea-level rise: Evidence from multi-decadal analysis of island change in the Central Pacific. *Global and Planetary Change*, Vol 72, 3, June, 234-246.
- Woodroffe C.D., 2008: Reef-island topography and the vulnerability of atolls to sea-level rise. *Global and Planetary Change*, 62 (1-2), 77-96.

## APPENDIX A – BASIS OF THE NCCOE METHODOLOGY FOR ASSESSMENT OF CLIMATE CHANGE IMPLICATIONS

In 1990, concerned with the growing proliferation of differing approaches being taken by government agencies, local councils and consultants to cater for climate change effects, the National Committee on Coastal and Ocean Engineering (NCCOE) decided to take a leadership role. With supporting funding provided under the Commonwealth Local Government Development Program, the NCCOE moved to develop a recognised set of guidelines for coastal engineers to responsibly consider the methods of dealing with the potential for climate change.

It was seen as essential that a broad spectrum of engineers from academia, all levels of government and consulting organisations be involved so that it would be clear to the profession and others that the guidelines represented a "state of the art" statement by the Institution of Engineers, Australia, in regard to the practice of coastal and ocean engineering. Accordingly, an open workshop process was developed that drew upon the requisite range of peer knowledge and experience from more than 20 professional engineers at that time. When the outcomes from that process were published (NCCOE 1991) it was one of the first profession-wide successes in developing a considered methodology to address enhanced Greenhouse issues in Australia.

The present update represents an expansion of the original document made in response to requests from the coastal and ocean engineering profession in Australia. It fulfils a need to reflect the most recent climate change scenarios, and is designed to complement the coastal engineering guidelines for ecologically sustainable development (NCCOE 2004). The original assessment methodology concepts developed by peer consensus in 1990 have been retained and it is anticipated that future workshop updates will be held as the need arises to review the basic methodology.

## APPENDIX B – INTENDED AUDIENCE AND SCOPE OF APPLICATION

This document is designed primarily for use by professional engineers with expertise in and responsibility for works and facilities within the coastal and ocean field. It is expected that such engineers would be those able to satisfy the following definition of a coastal and ocean engineer and possess the level of qualifications and experience set out below.

### *Definition*

Coastal and ocean engineering is a specialised branch of civil engineering that deals with the investigation, design, construction and maintenance of coastal and ocean related projects or facilities and the provision of technical advice for planning and management of natural processes in the near-shore and ocean zones. The coastal and ocean engineer must ensure that facilities in these regions allow for the influence of prevailing winds, waves, tides, currents and sediment movements, optimise the consequent adverse and beneficial environmental effects and minimise risks to life and property. These aims must be achieved for the operational and design conditions and for both the construction and post operational phases of any project. In addition to understanding the geomorphological and ecological development of the marine environment, the coastal and ocean engineer is required to make quantitative assessments and predictions of the physical characteristics of the environment in so far as it impacts human needs. These assessments depend upon the availability of reliable physical data sets over a range of space and time scales, sophisticated statistical techniques and often the use of complex numerical models of the dynamic interfaces between atmosphere, land and sea.

### *Coastal and Ocean Engineering Qualifications*

A qualified Coastal and Ocean Engineer is expected to give due consideration to all the natural processes involved and to be responsible for the consequence of human intervention in the near-shore zone to ensure ecologically sustainable development. It is recommended that for a person to be considered suitably qualified, he or she should meet the following essential minimum requirements:

- A tertiary qualification in Engineering with particular relevance to coastal and ocean engineering.
- Membership (MIEAust) of Engineers Australia (EA).
- Chartered Professional Engineer (CPEng), registered on NER.
- Membership of the Civil College of Engineers Australia.
- State registration where applicable, e.g. RPEQ.
- Experience in development of coast protection strategy or investigation, design and construction of coastal and ocean works.
- Experience in environmental assessment with particular emphasis on coastal and ocean engineering.
- Knowledge of the processes and methods involved in coastal and ocean engineering.

In addition to the above, further desirable requirements include:

- Post-graduate qualifications and/or studies in coastal and ocean engineering or related fields.
- Experience and knowledge in the earth sciences relevant to coastal management.

Recognised areas of further speciality and experience may include:

- Ports and harbours, dredging and reclamation
- Breakwaters, seawalls and revetments
- Sediment transport, beach nourishment
- Coastal management and planning
- Coral reefs and islands
- Hydraulics of estuaries, rivers and canals
- Water quality, mixing and dispersion
- Physical hydraulic scale modelling
- Numerical modelling of tides, currents, waves and storm surge
- Data collection and analysis
- Natural hazards risk assessment
- Vessel motion analysis

- Marine pipelines and offshore structures
- Design criteria assessment
- Meteorology, oceanography, statistics

## APPENDIX C – IMPACT ASSESSMENT INTERACTION MATRIX TEMPLATE

This template may be useful for the preliminary assessment of the major interactions between the key climate change variables (K1 to K6) and the process variables (S1 to S13) in accordance with the recommended procedures of Section 4 and the interactions from *Table 6*.

	<b>Mean Sea Level</b> K1	<b>Ocean Currents &amp; Temperature</b> K2	<b>Wind Climate</b> K3	<b>Wave Climate</b> K4	<b>Rainfall / Runoff</b> K5	<b>Air Temperature</b> K6
<b>Local Sea Level</b> S1						
<b>Local Currents</b> S2						
<b>Local Winds</b> S3						
<b>Local Waves</b> S4						
<b>Effects on Structures</b> S5						
<b>Groundwater</b> S6						
<b>Coastal Flooding</b> S7						
<b>Beach Response</b> S8						
<b>Foreshore Stability</b> S9						
<b>Sediment Transport</b> S10						
<b>Hydraulics of Estuaries</b> S11						
<b>Quality of Coastal Waters</b> S12						
<b>Ecology</b> S13						



ENGINEERS  
AUSTRALIA

The National Committee on Coastal  
and Ocean Engineering

[engineersaustralia.org.au/NCCOE](https://engineersaustralia.org.au/NCCOE)