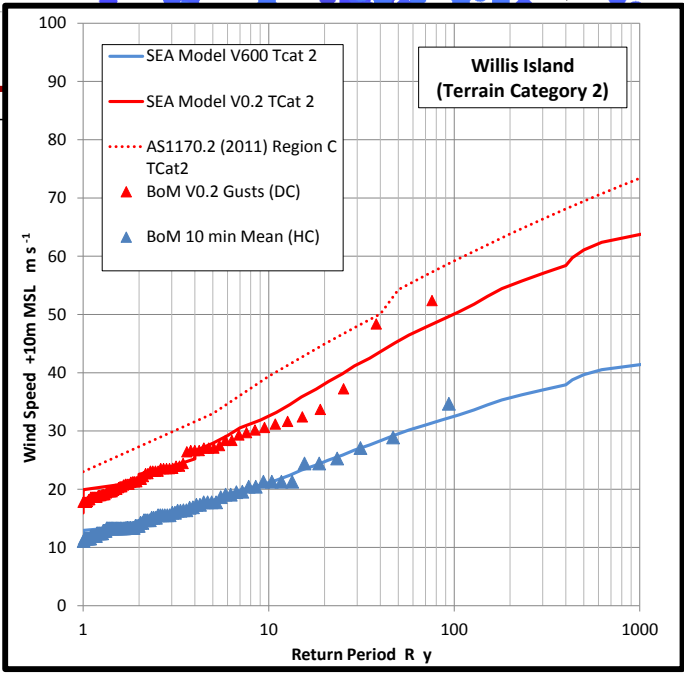
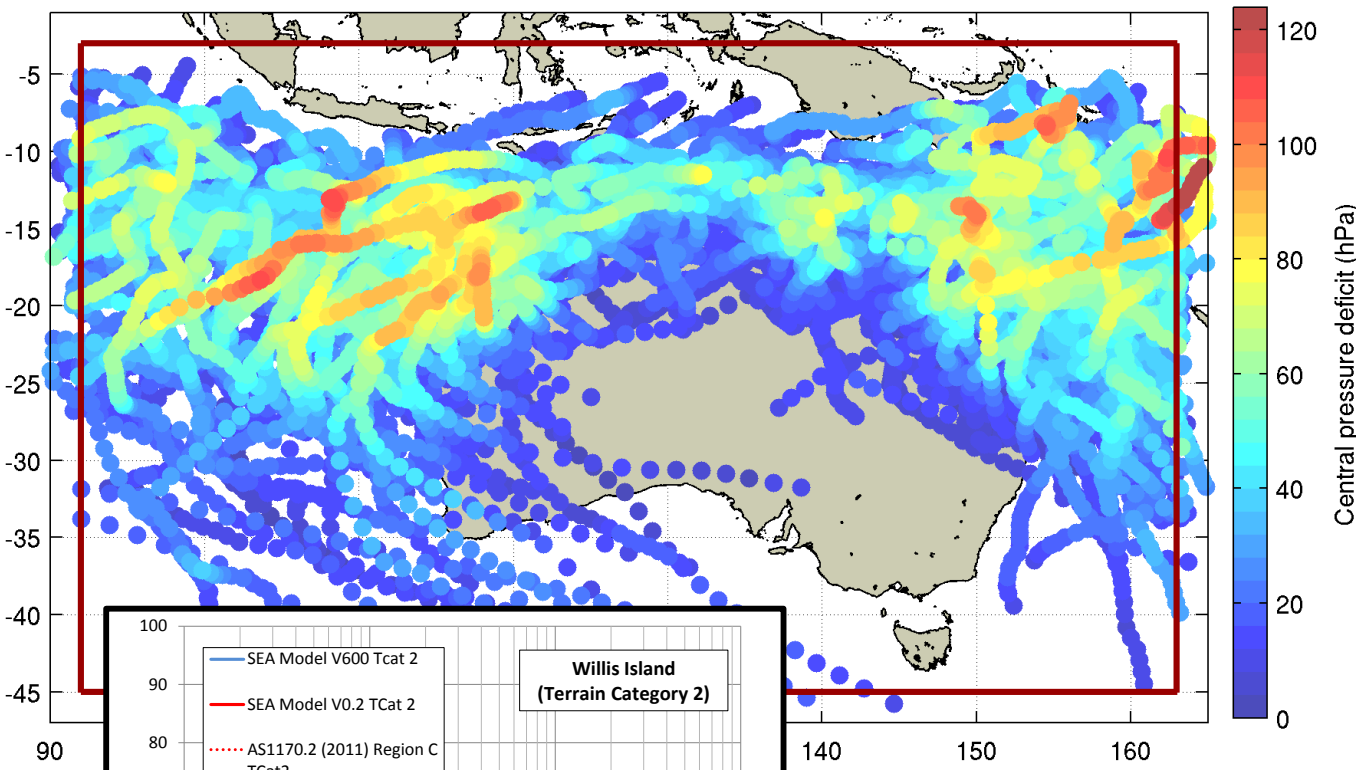




Australia-Wide Simulated Tropical Cyclone Wind Data

Synthetic Cyclones (# equal to 1969-2008)

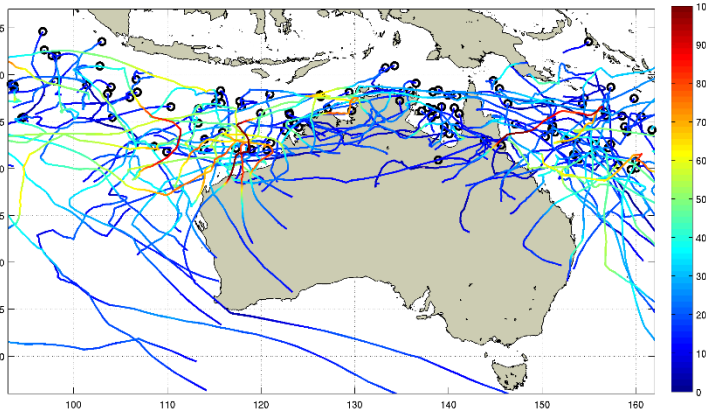


A simulated 10,000 year tropical cyclone climatology has been developed that is verified against historical storm track statistics (overleaf) and also selected long-term measurement sites (left).

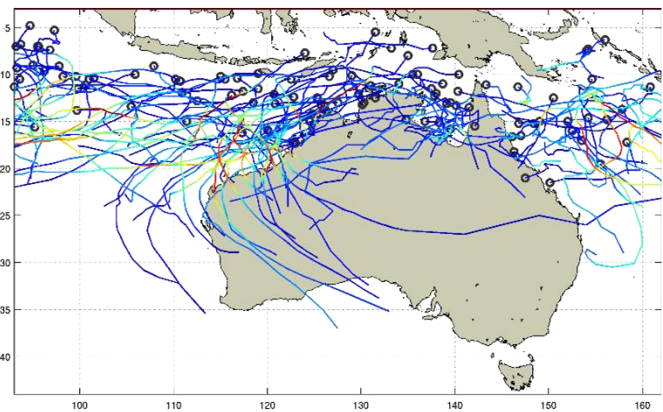
Time series of simulated tropical cyclone surface winds at standard exposure can be supplied for any location within the red square above.

Prices on application.

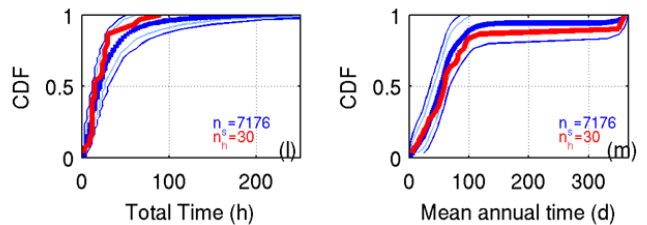
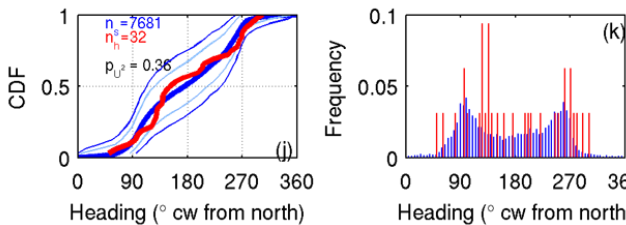
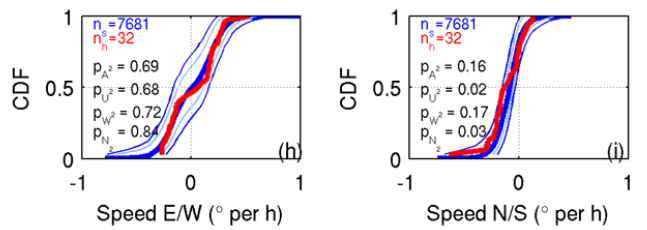
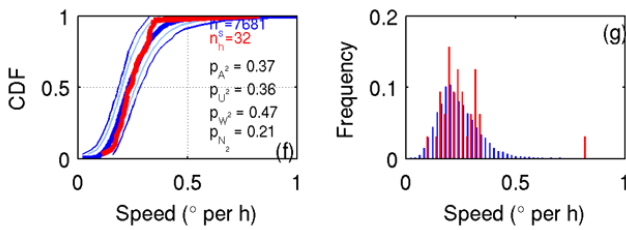
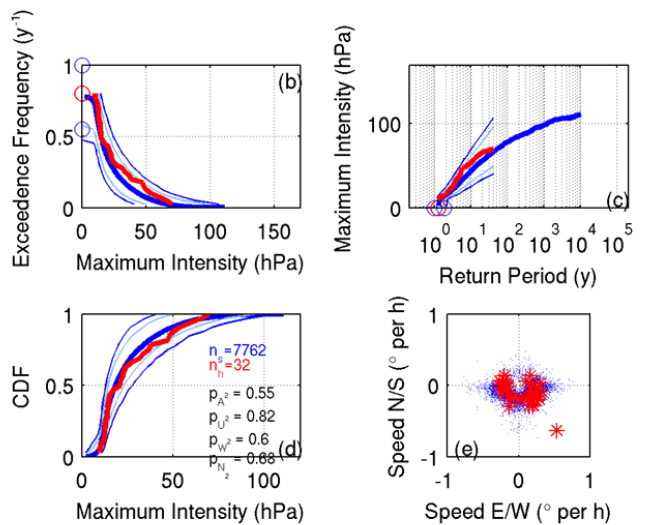
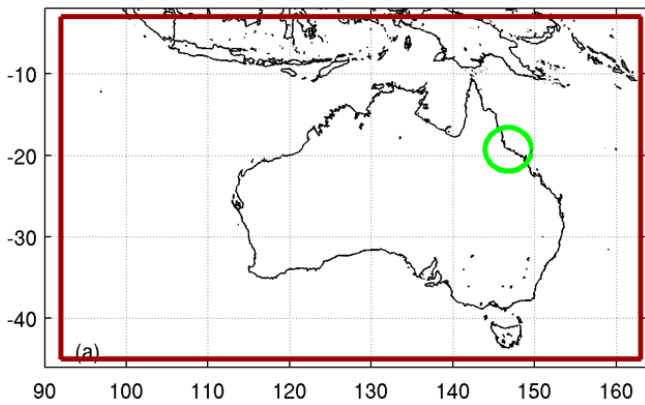
Storm Track Verification Examples



(a) 10 years synthetic



(b) 10 years historical



(c) Track fitting statistics within 300 km of Townsville (blue is synthetic)

Indicated parameters follow James and Mason (2005) Synthetic tropical cyclone database. J Waterway, Port, Coastal and Ocean Engineering, ASCE, 131 (4), 181-192.